

# Shelter-In-Place Procedures

Chemical, biological, or radiological contaminants may be released into the environment in such quantity and/or proximity to the university that it is safer to remain indoors rather than to evacuate students, faculty, staff, and visitors.

Examples of situations that might result in a decision to institute "shelter-in-place" include:

- An explosion in a nearby facility that releases chemicals
- A derailed and leaking tank car of chlorine from a rail line near the university
- Severe weather events such as a tornado or severe thunderstorm

"Shelter-in-place" means selecting a room or rooms within the facility, ideally with no or few windows, and taking refuge there. In many cases, local authorities will issue advice to shelter-in-place via TV or radio, and the university may send a UNILERT message and email.

In the event of a tornado or severe thunderstorm, you should seek out a shelter-in-place location that is on the lowest floor possible. If you do not have time to get to a lower floor, choose the closest shelter-in-place location and try to get under a desk or table.

The following maps indicate all the rooms in each building that have been designated as shelter-in-place locations. Please take a few minutes to identify the shelter-in-place rooms closest to where you are typically located.

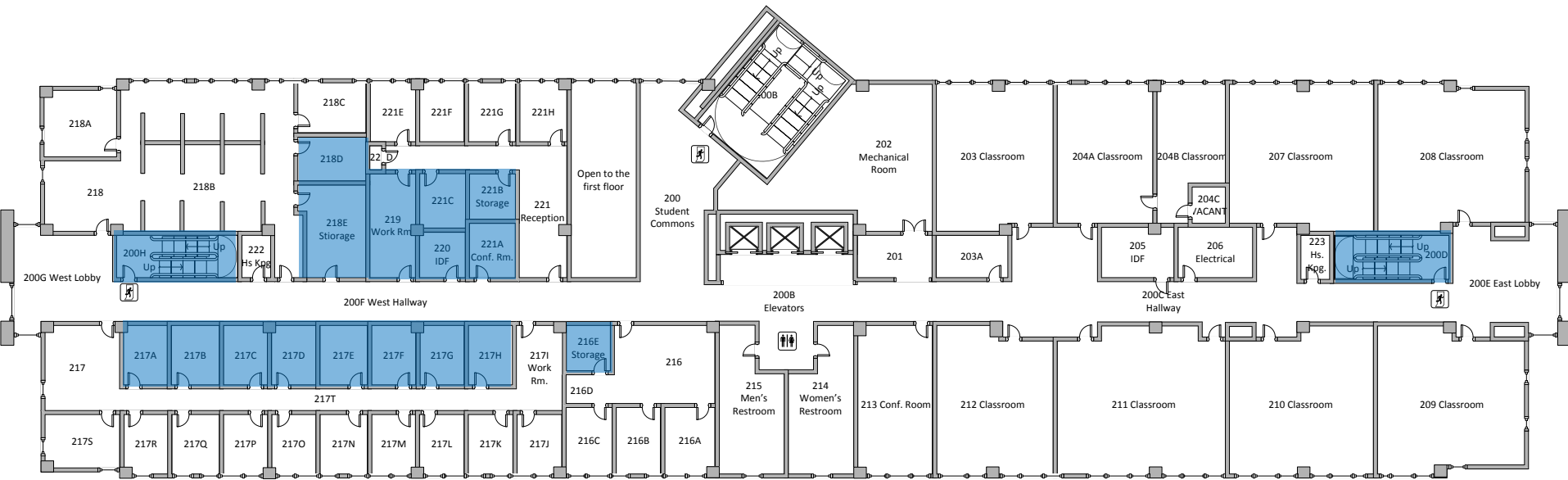
The image to the right is on the name-plate of every door that has been identified as a shelter-in-place location.



# 1<sup>st</sup> Floor Founders Hall



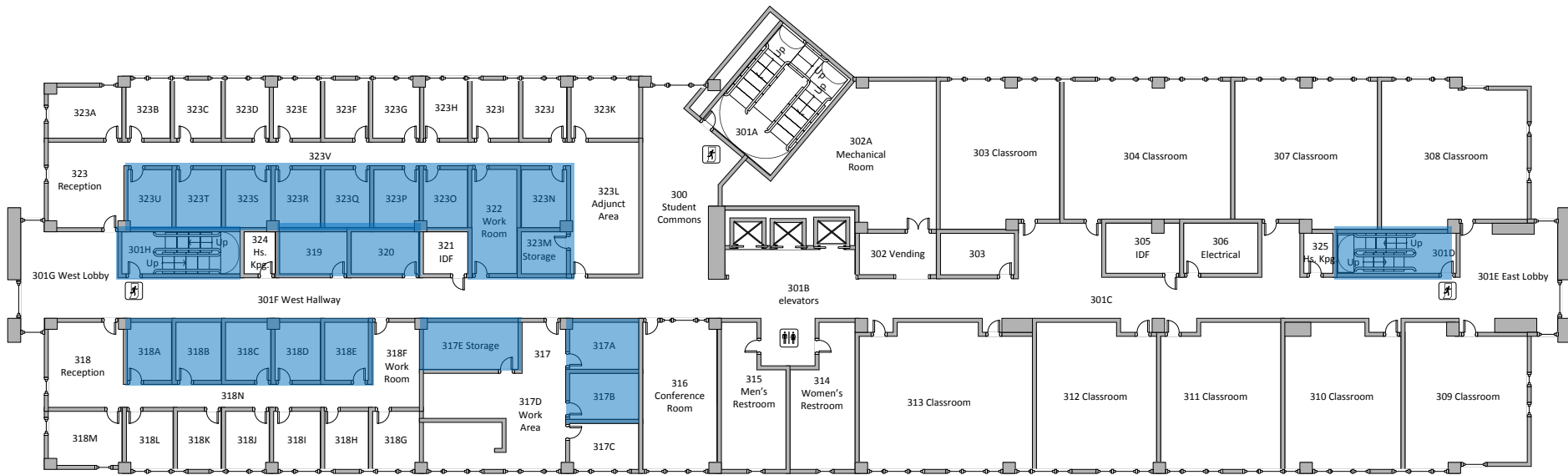
# 2<sup>nd</sup> Floor Founders Hall



Shelter-In-Place Locations



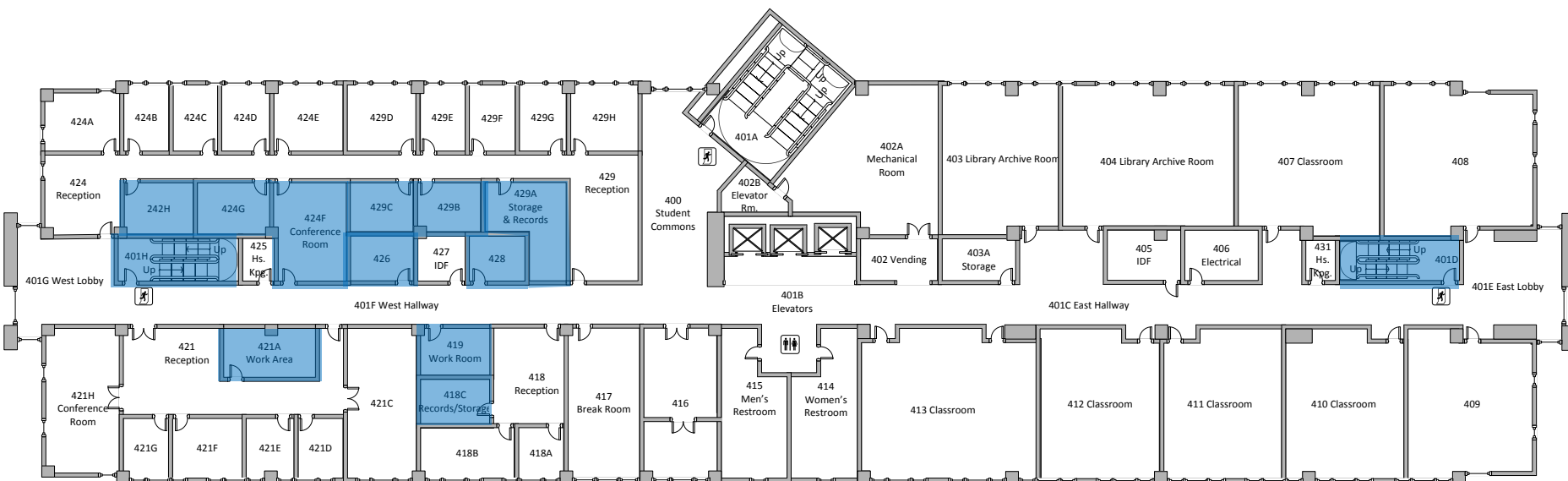
# 3<sup>rd</sup> Floor Founders Hall



Shelter-In-Place Locations



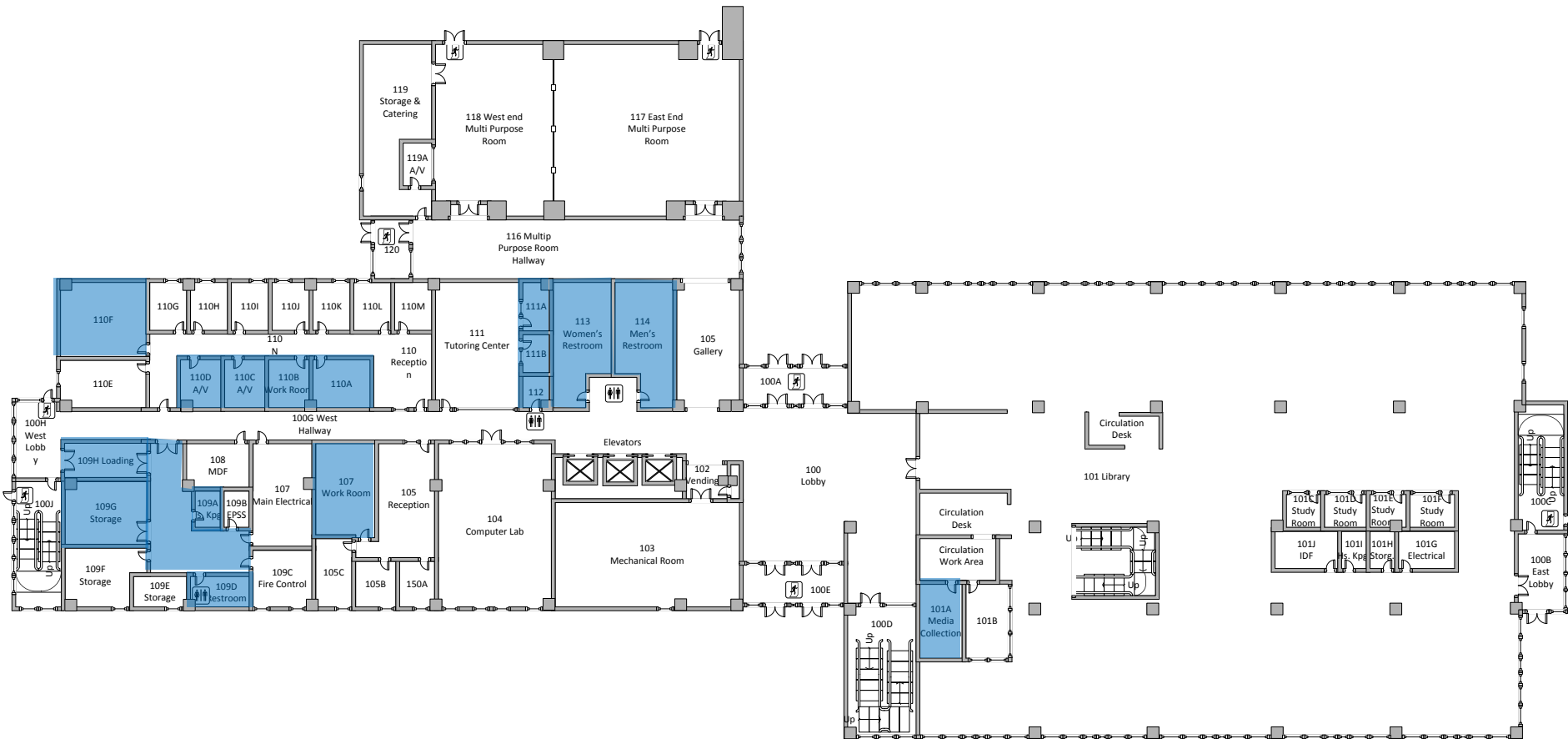
# 4<sup>th</sup> Floor Founders Hall



## Shelter-In-Place Locations



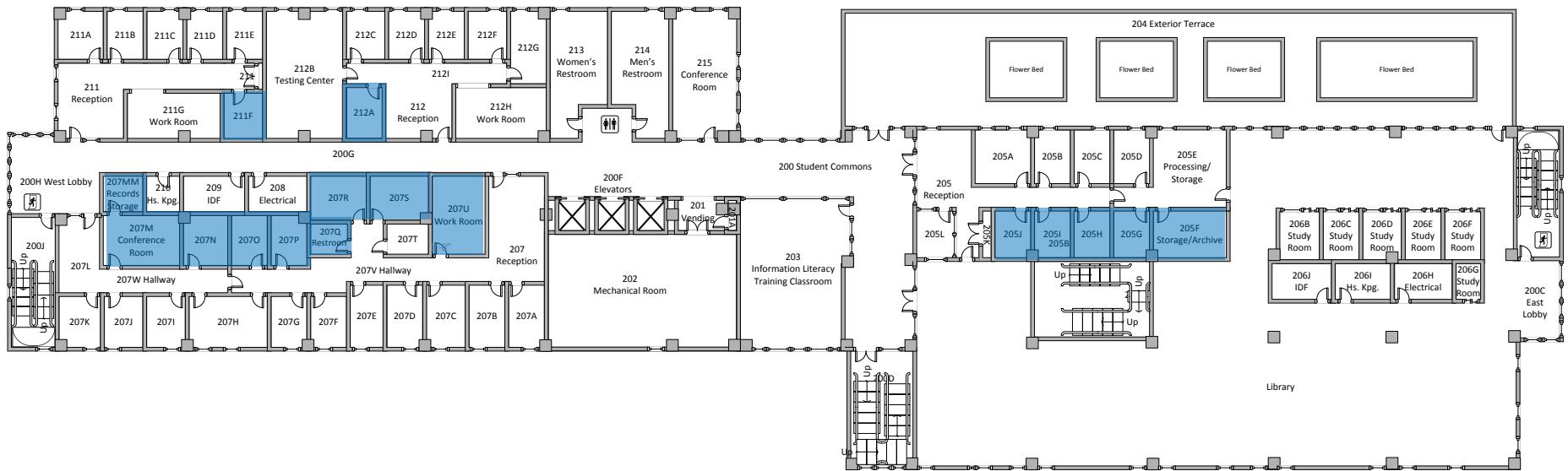
# 1<sup>st</sup> Floor Warrior Hall



Shelter-In-Place Locations



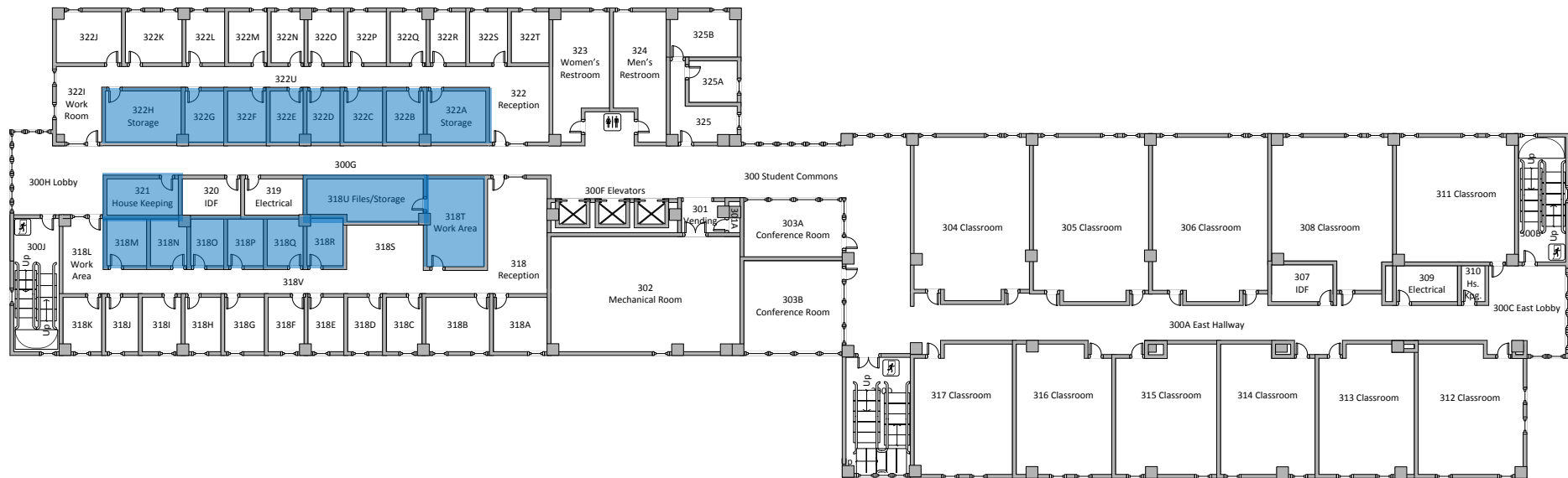
# 2<sup>nd</sup> Floor Warrior Hall



Shelter-In-Place Locations



# 3<sup>rd</sup> Floor Warrior Hall

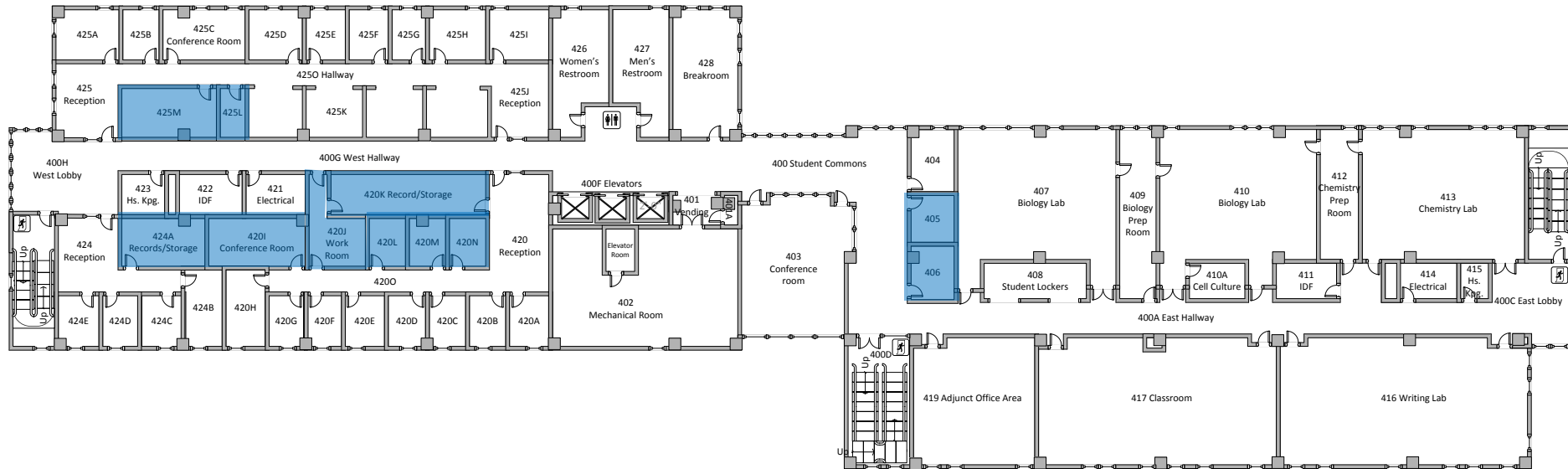


Shelter-In-Place Locations





# 4<sup>th</sup> Floor Warrior Hall



Shelter-In-Place Locations

