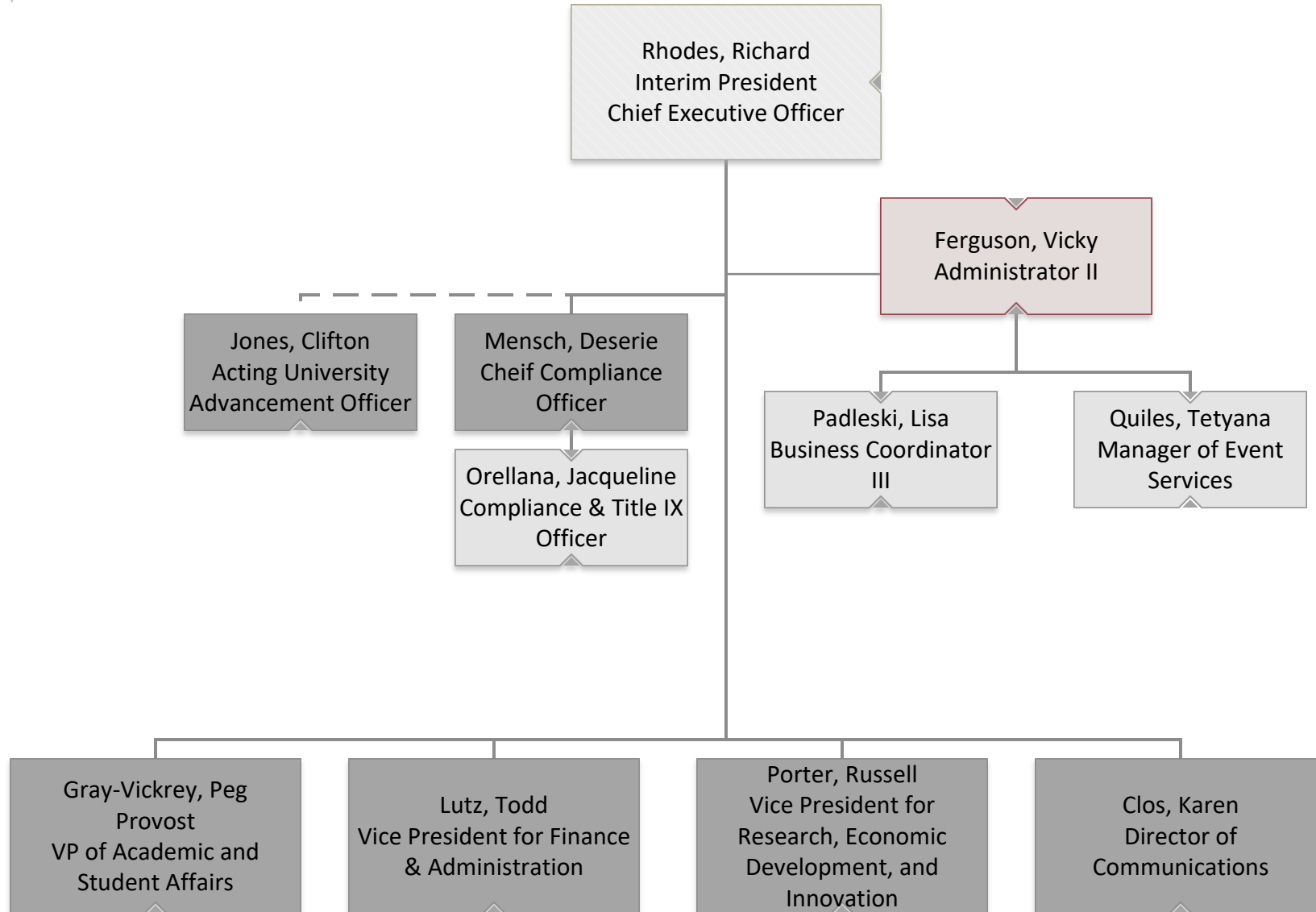


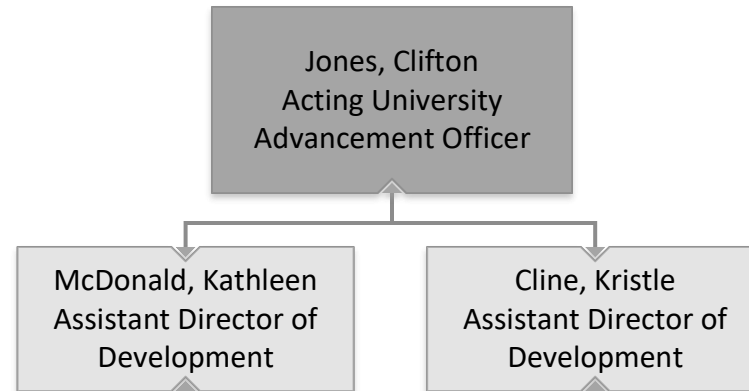


Office of the President



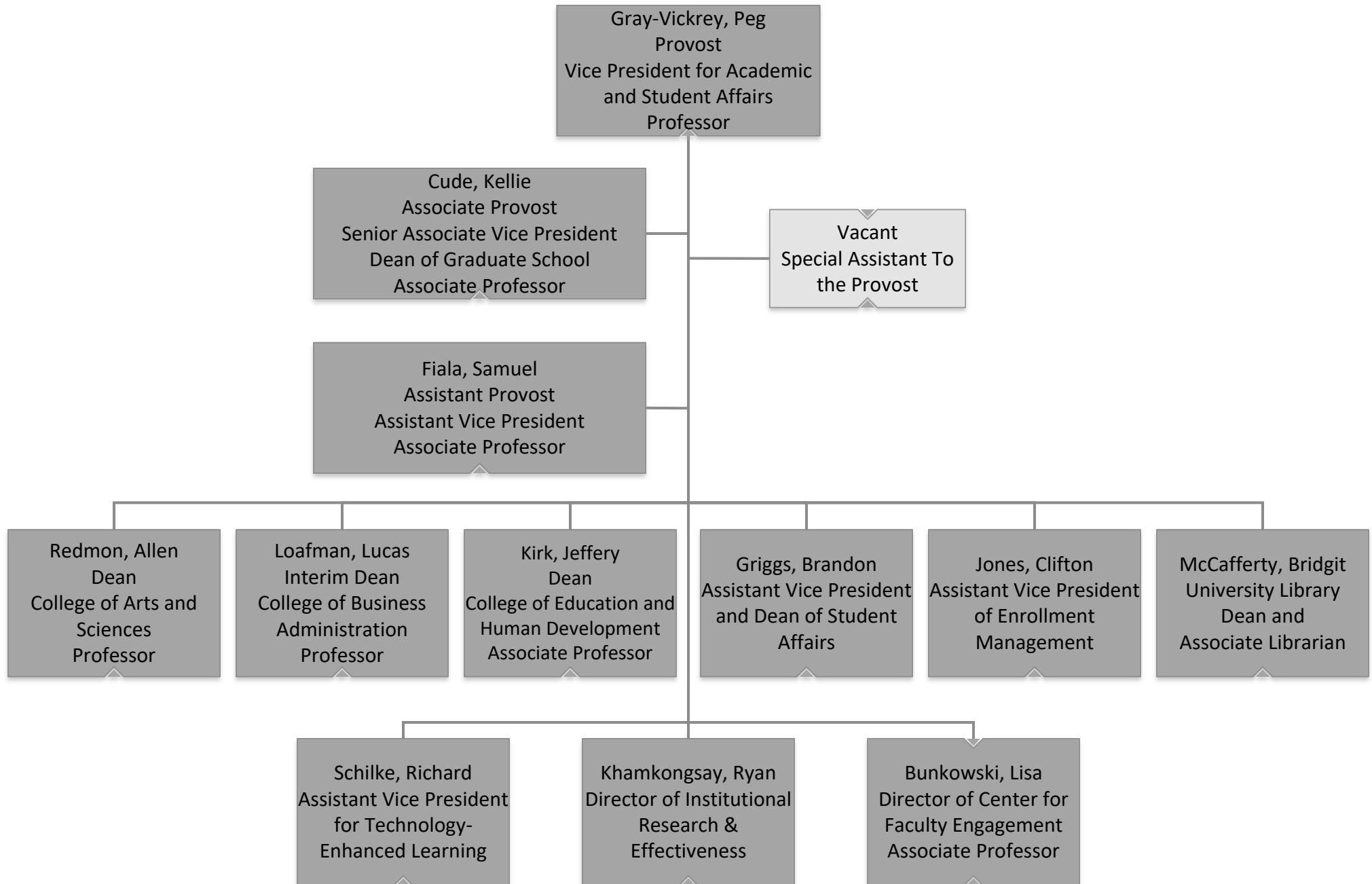


Office of the President



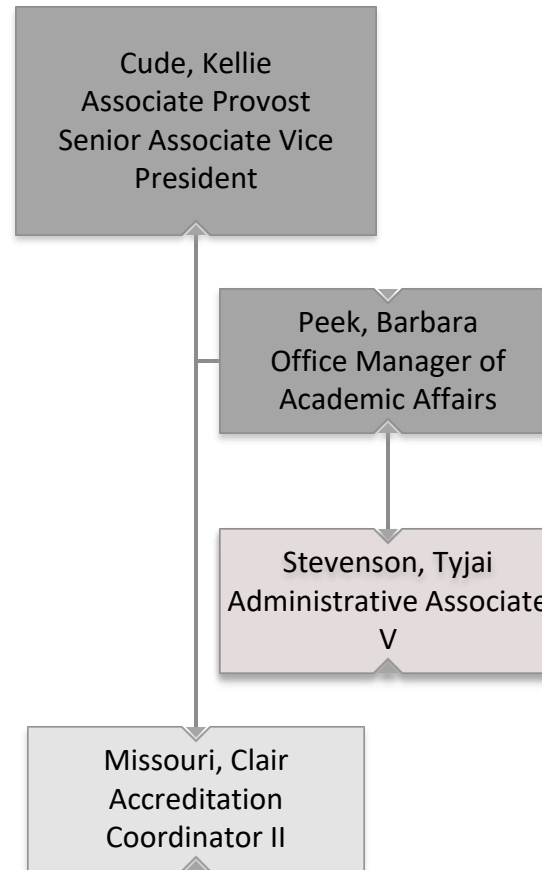


Provost Vice President for Academic and Student Affairs



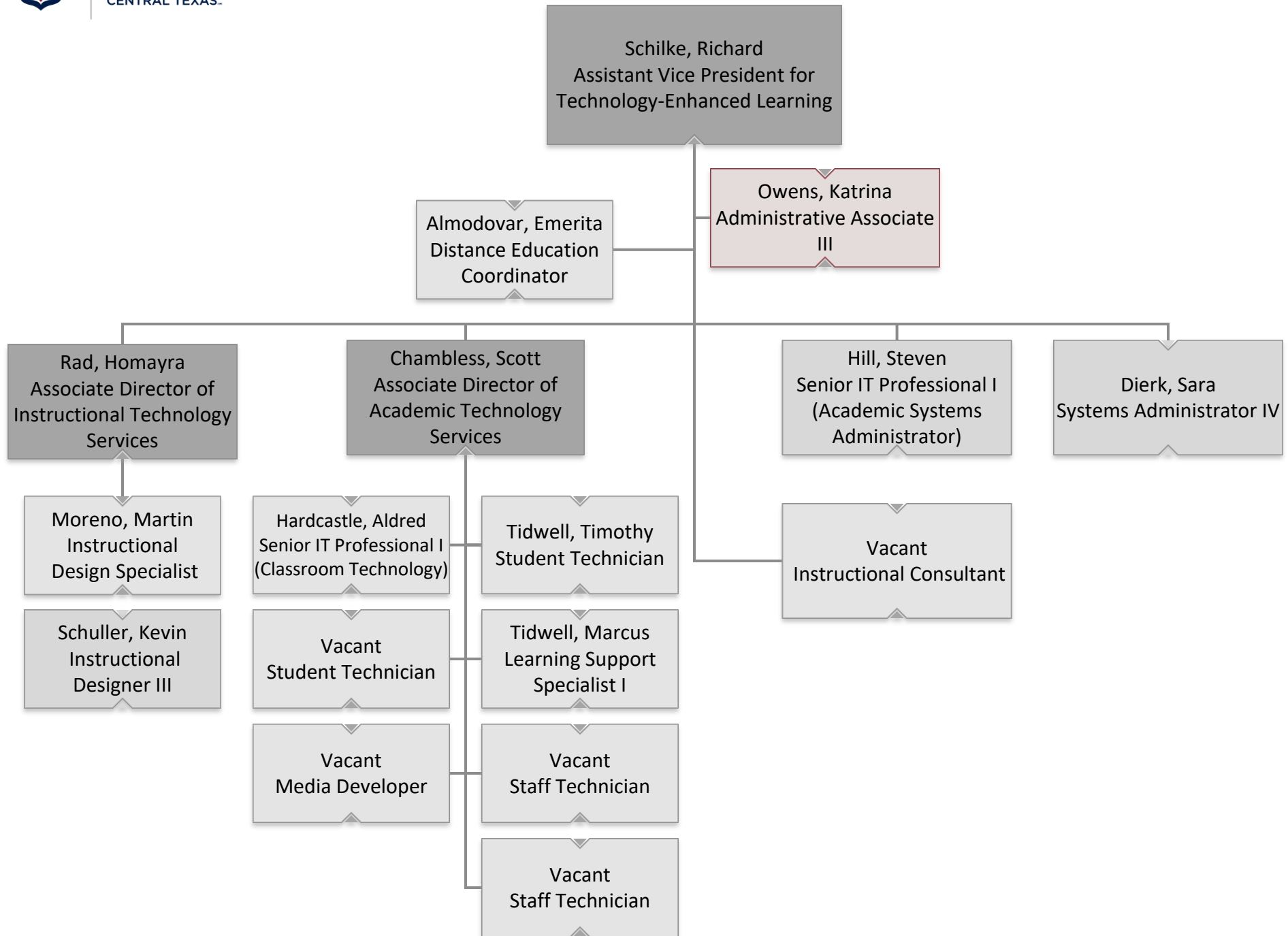


Academic Affairs



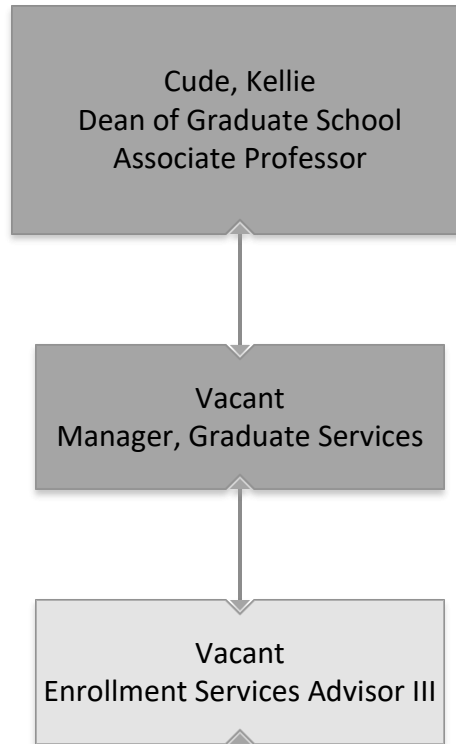


Technology Enhanced Learning



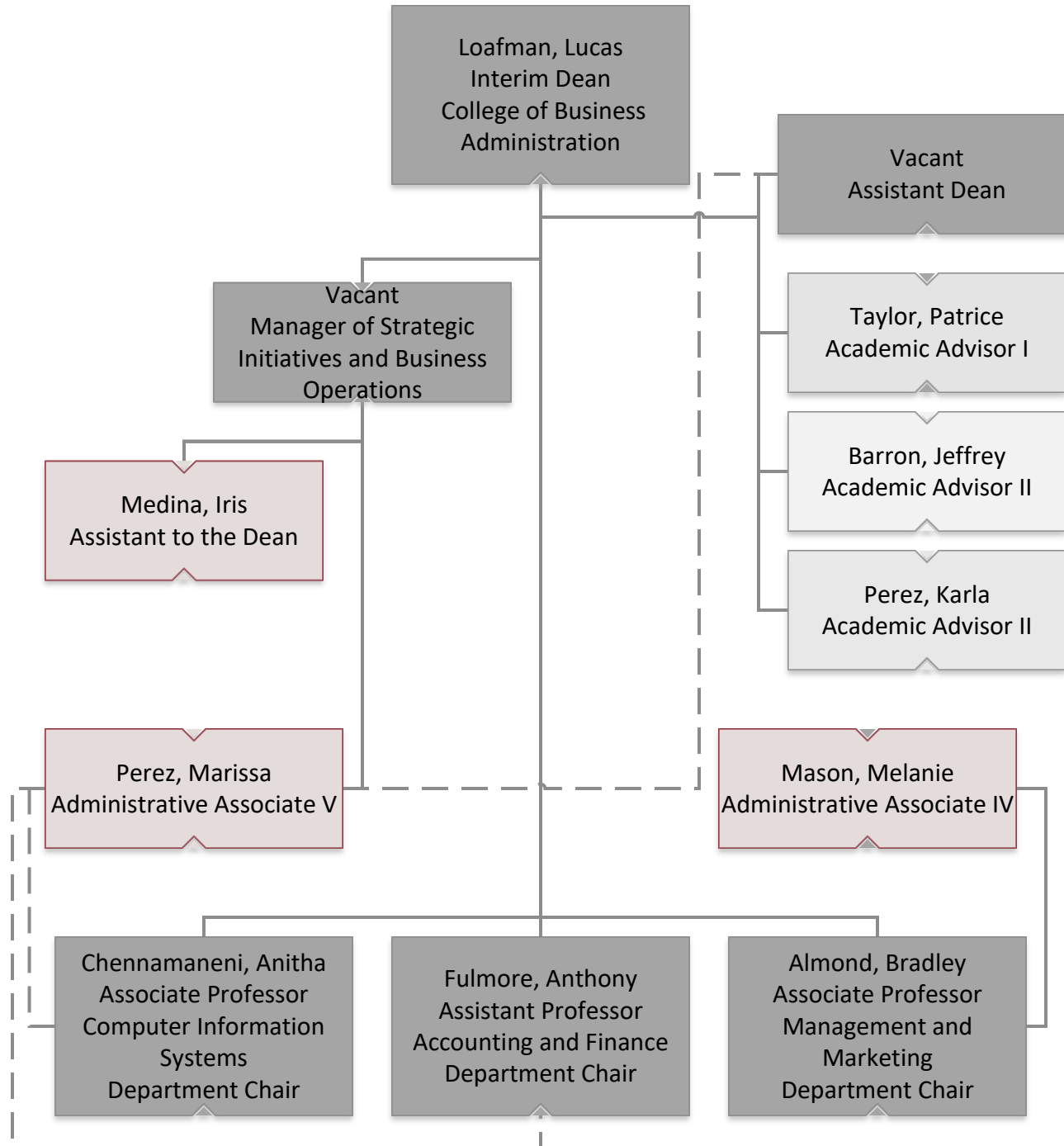


Graduate School



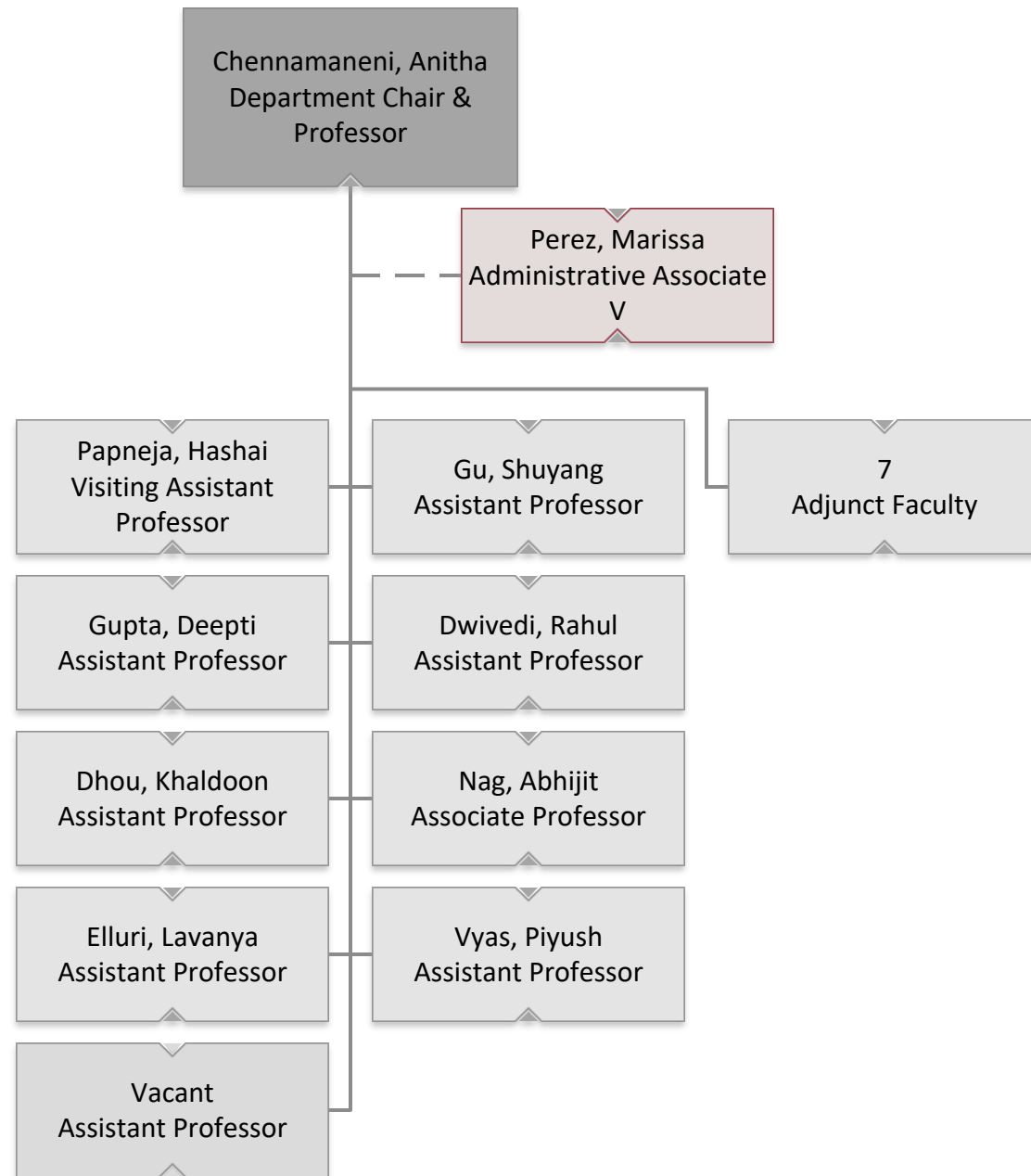


College of Business Administration



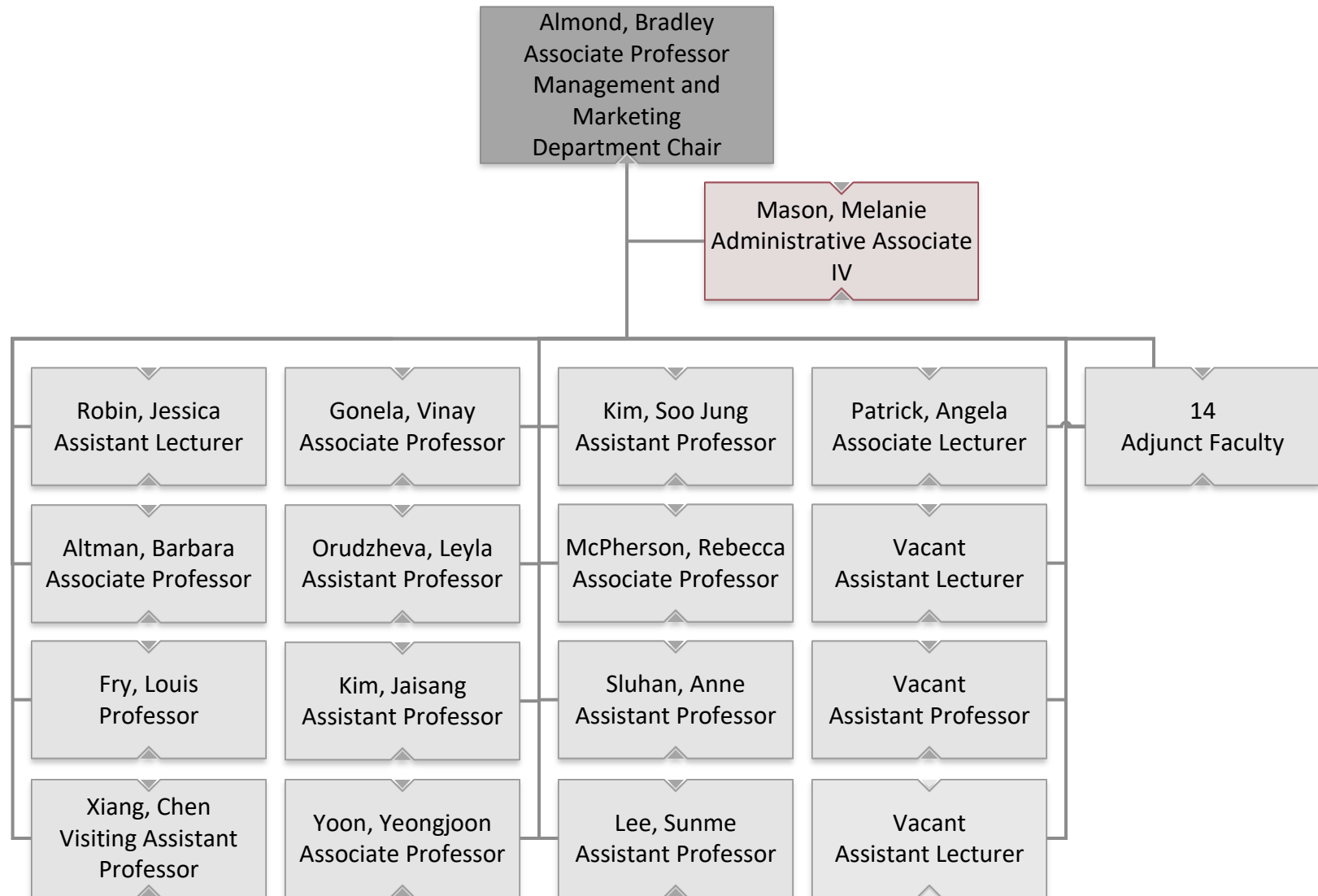


College of Business Administration Computer Information Systems



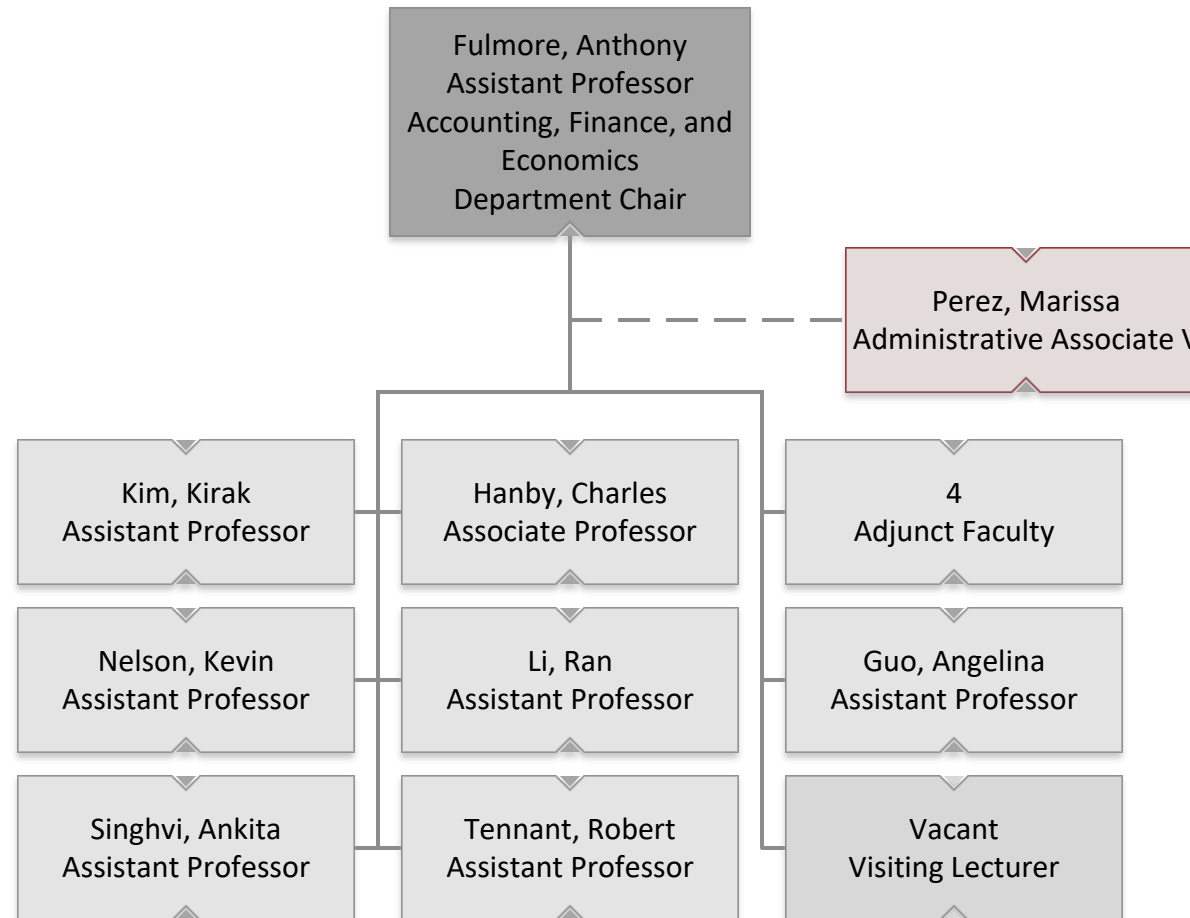


College of Business Administration Management and Marketing



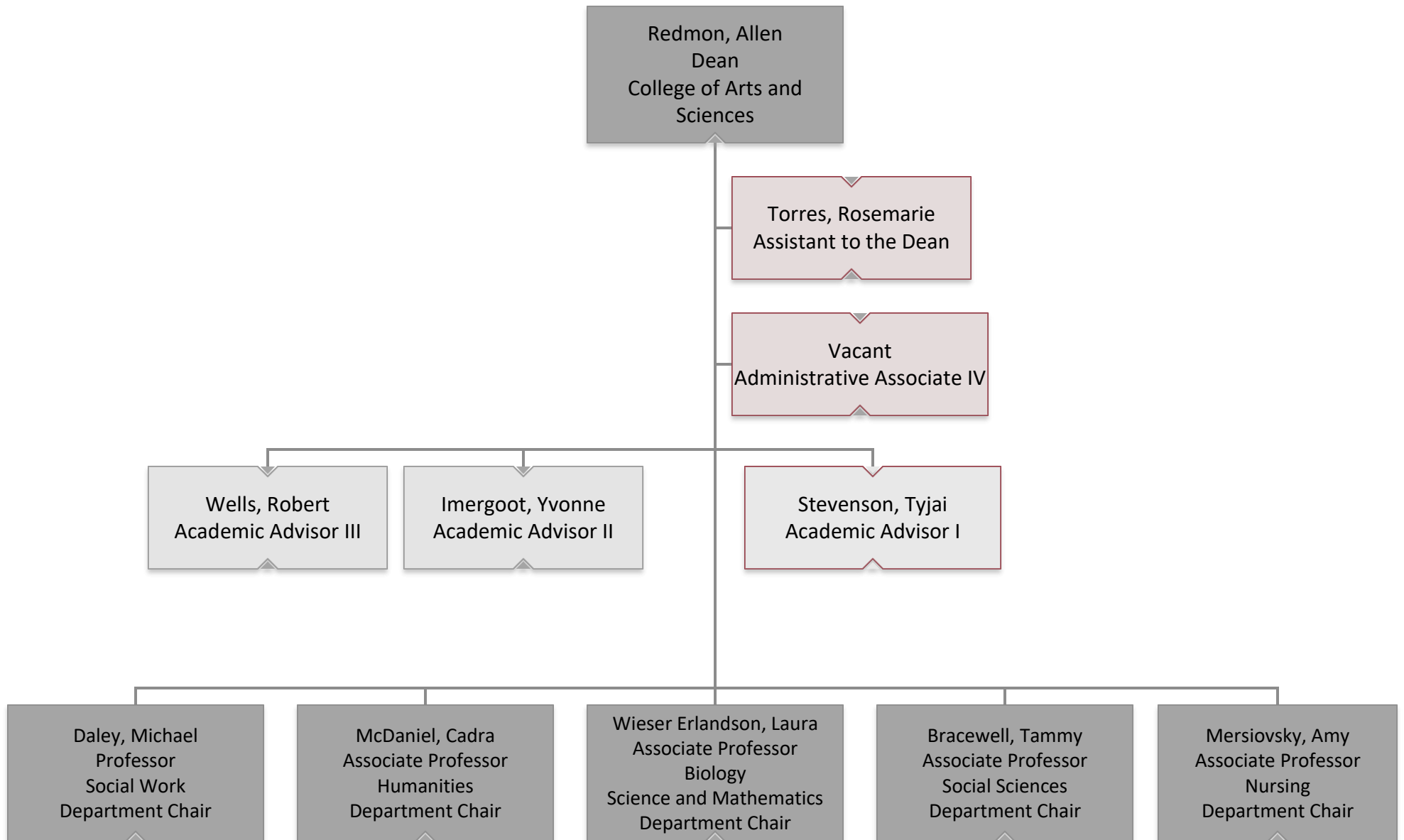


College of Business Administration Accounting, Finance, and Economics



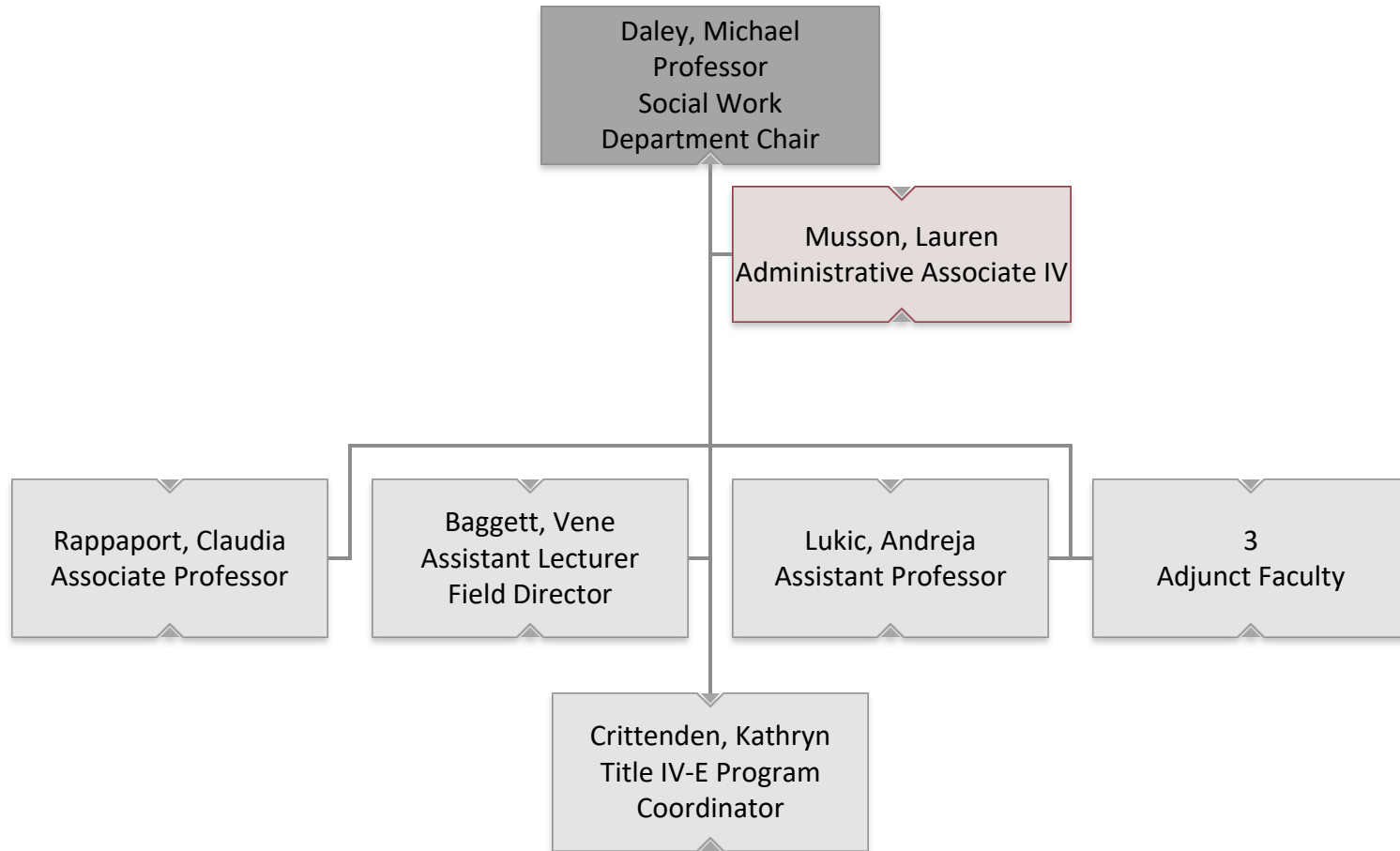


College of Arts and Sciences



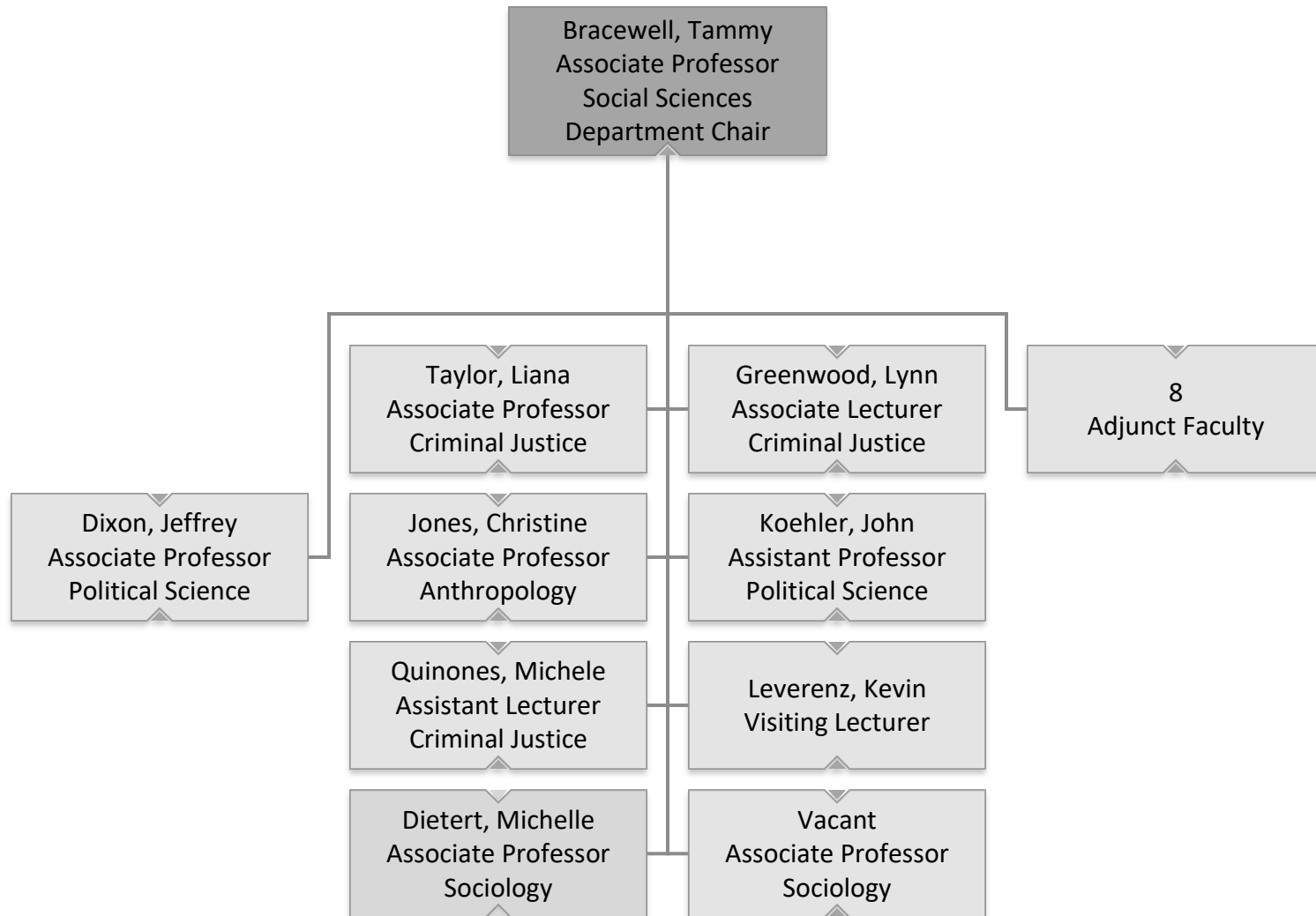


College of Arts and Sciences Social Work



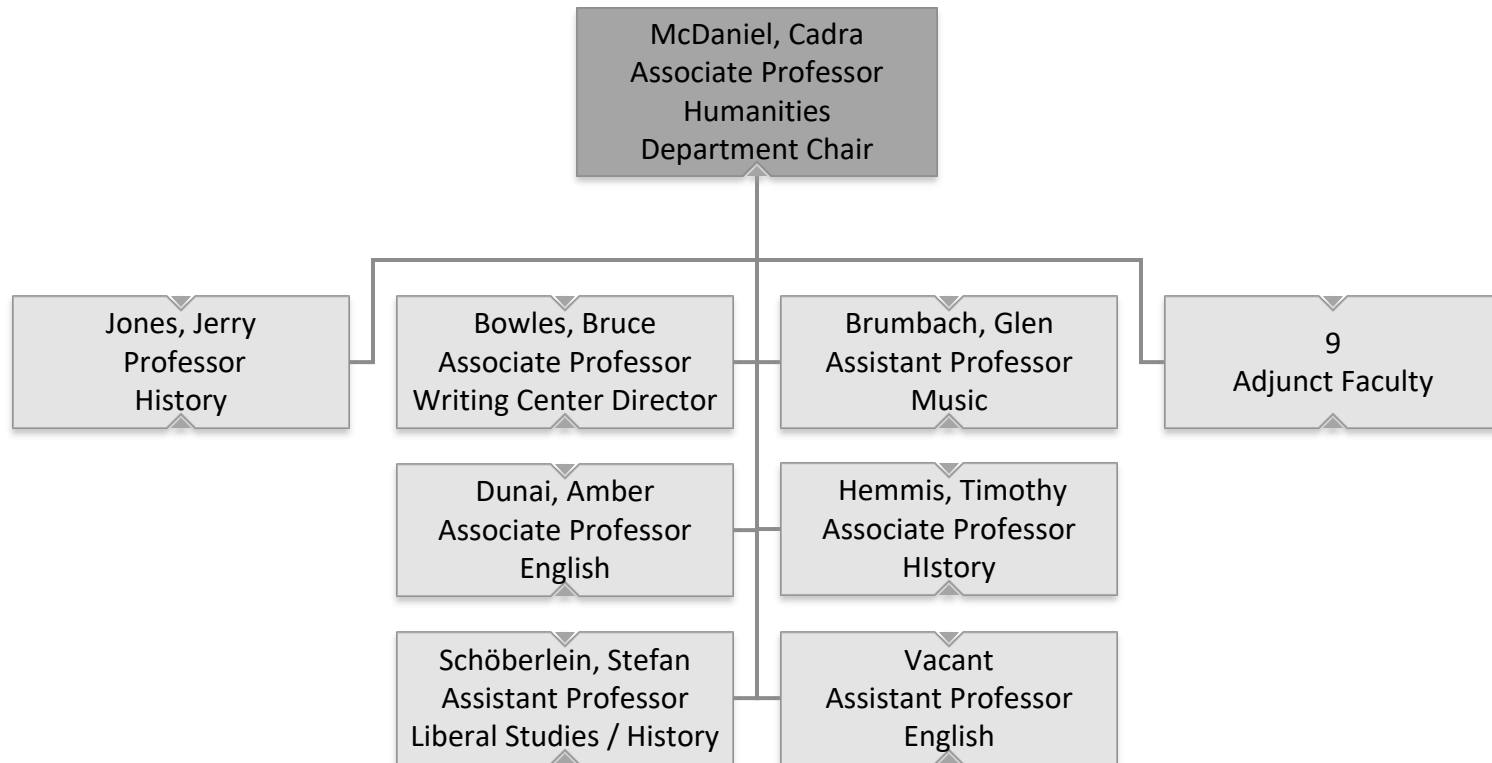


College of Arts and Sciences Social Sciences



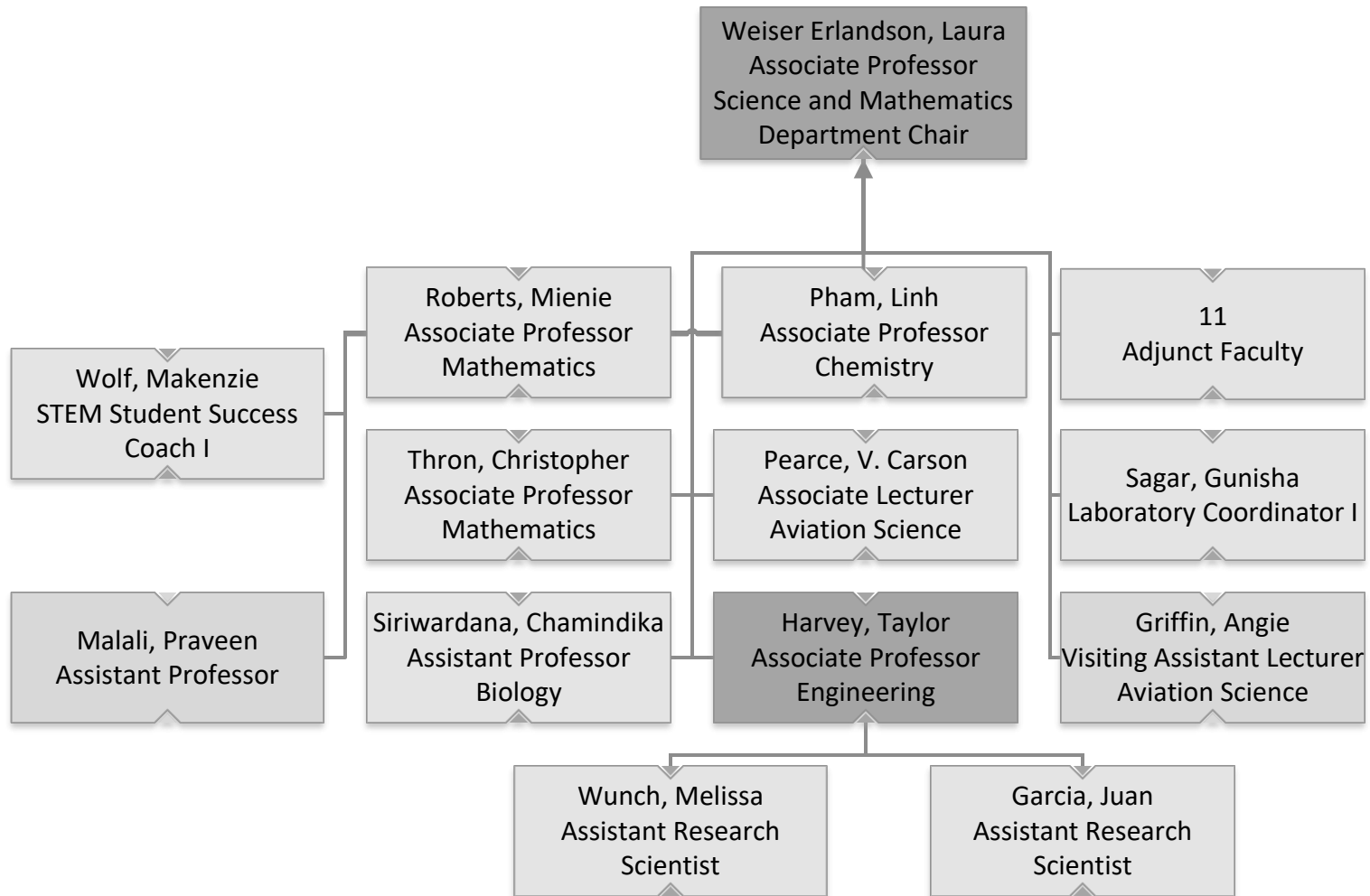


College of Arts and Sciences Humanities



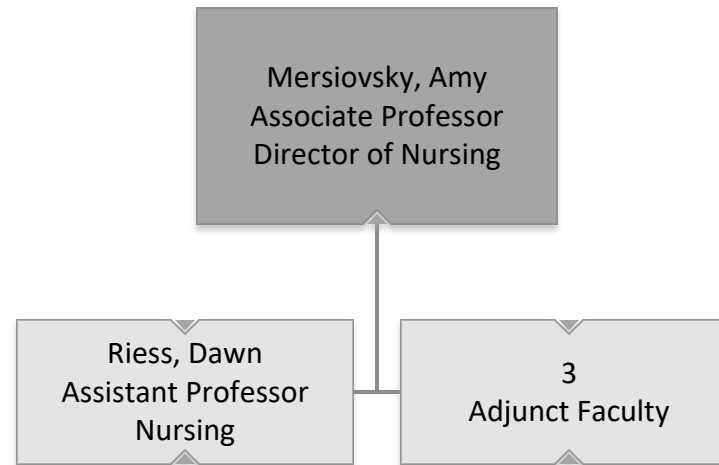


College of Arts and Sciences Science and Mathematics



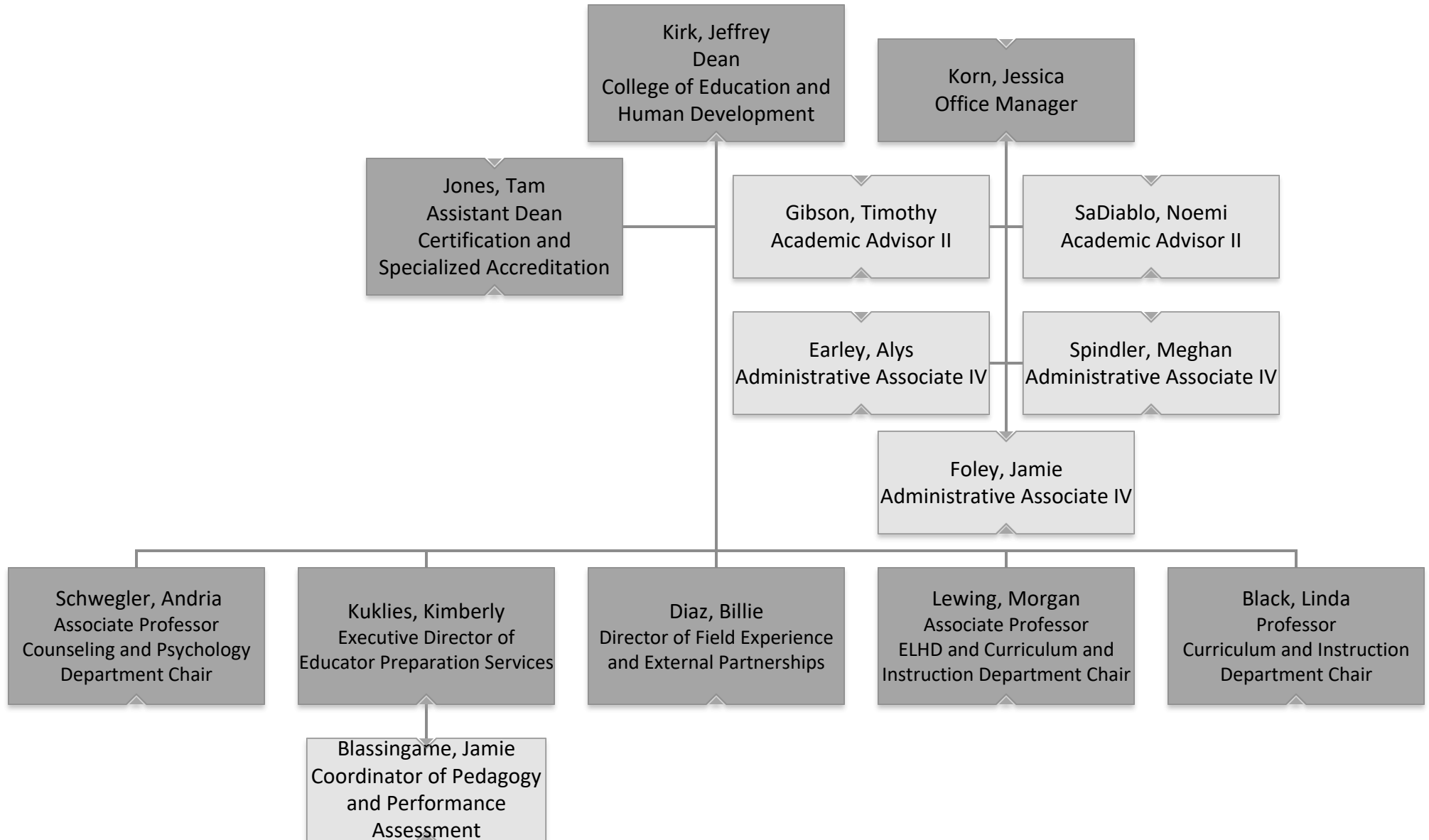


College of Arts and Sciences Nursing



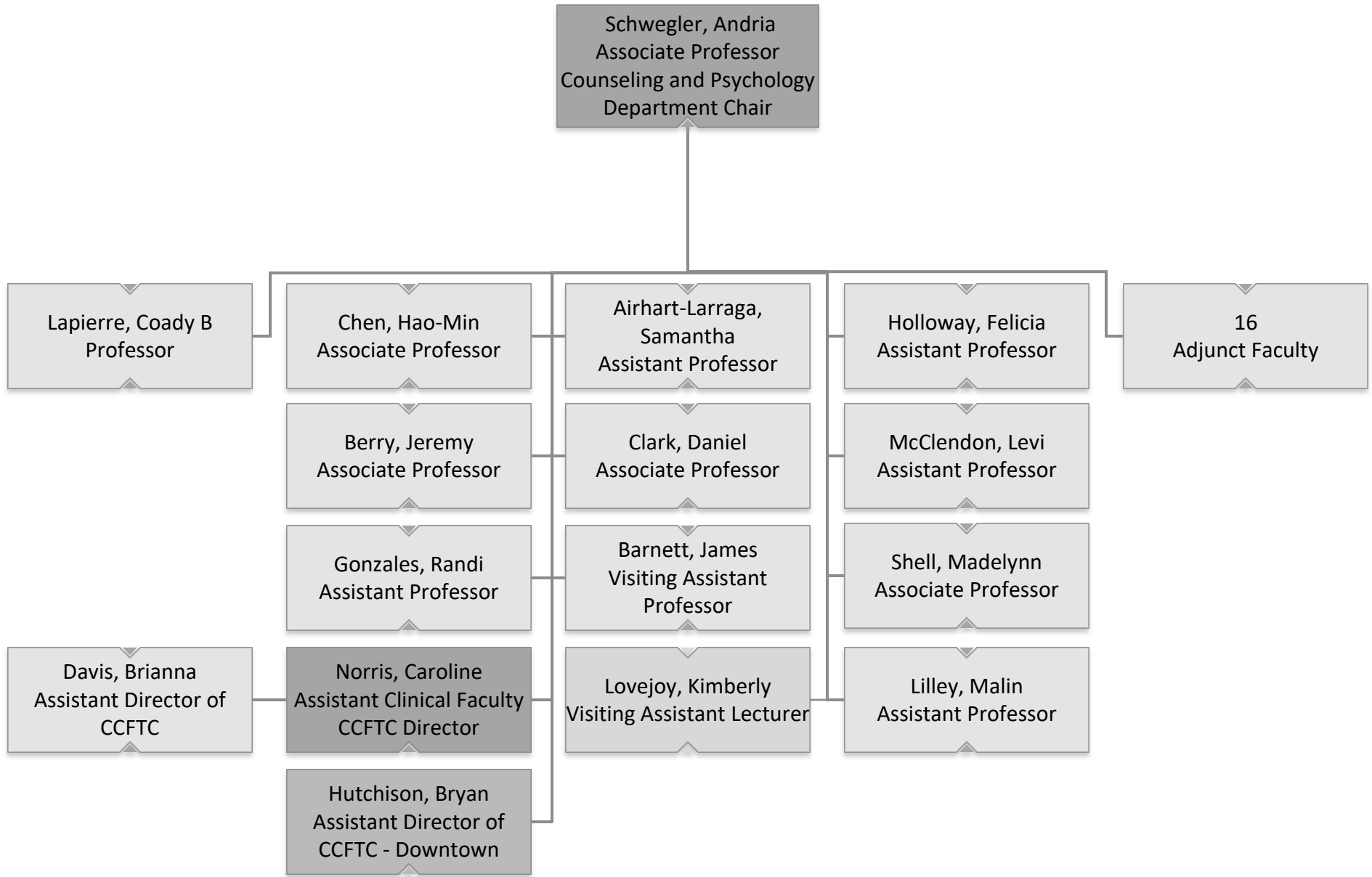


College of Education and Human Development



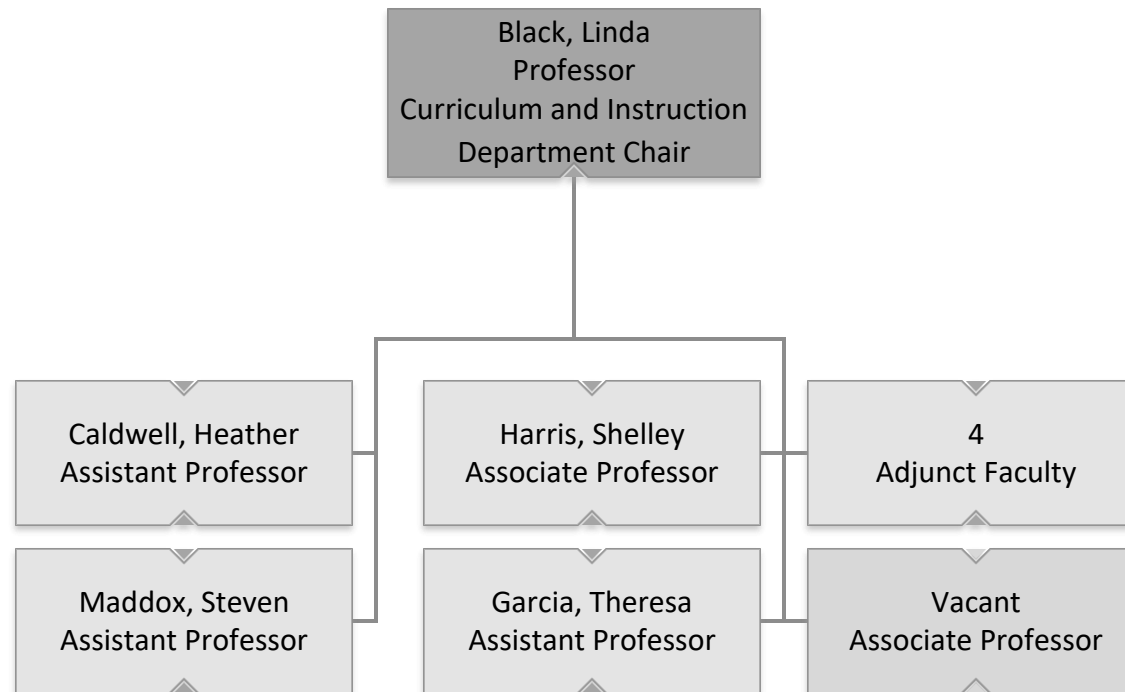


College of Education and Human Development Counseling and Psychology



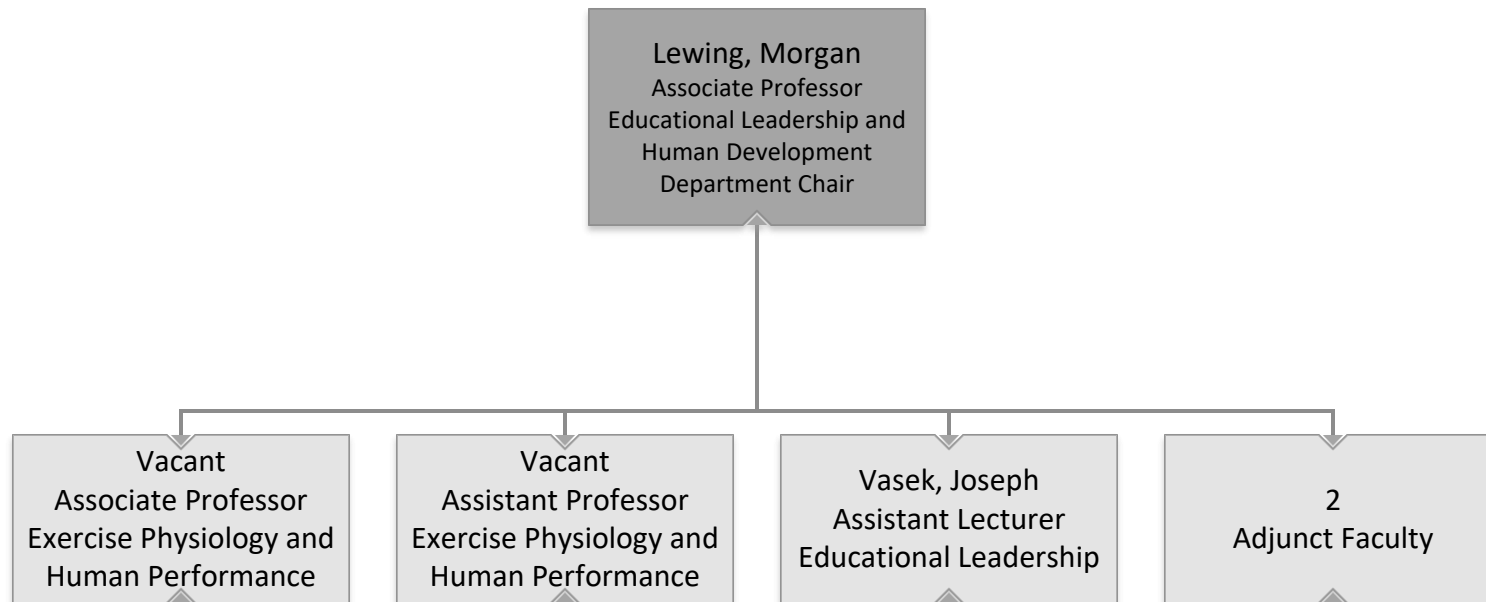


College of Education and Human Development Curriculum and Instruction



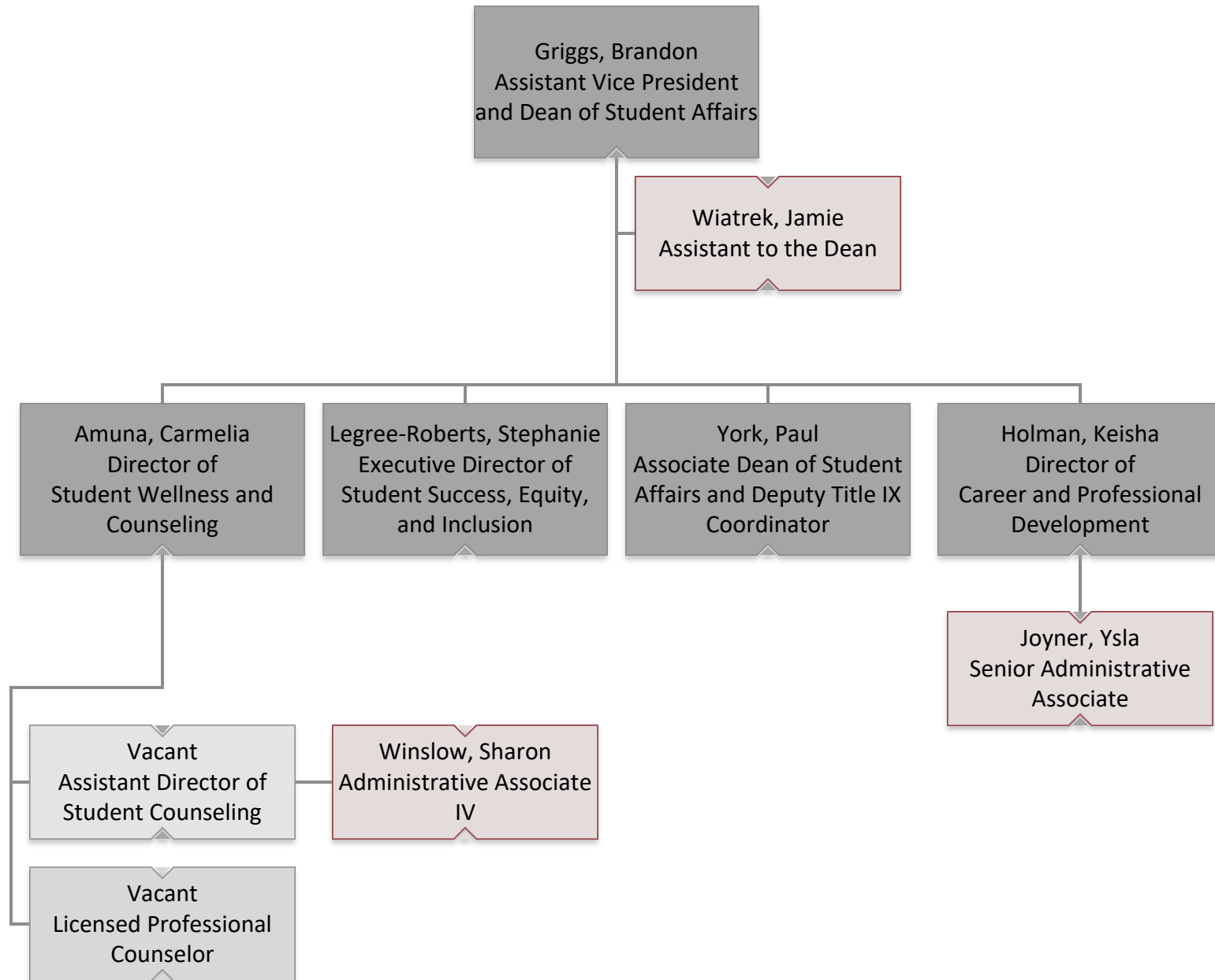


College of Education and Human Development Educational Leadership and Human Development



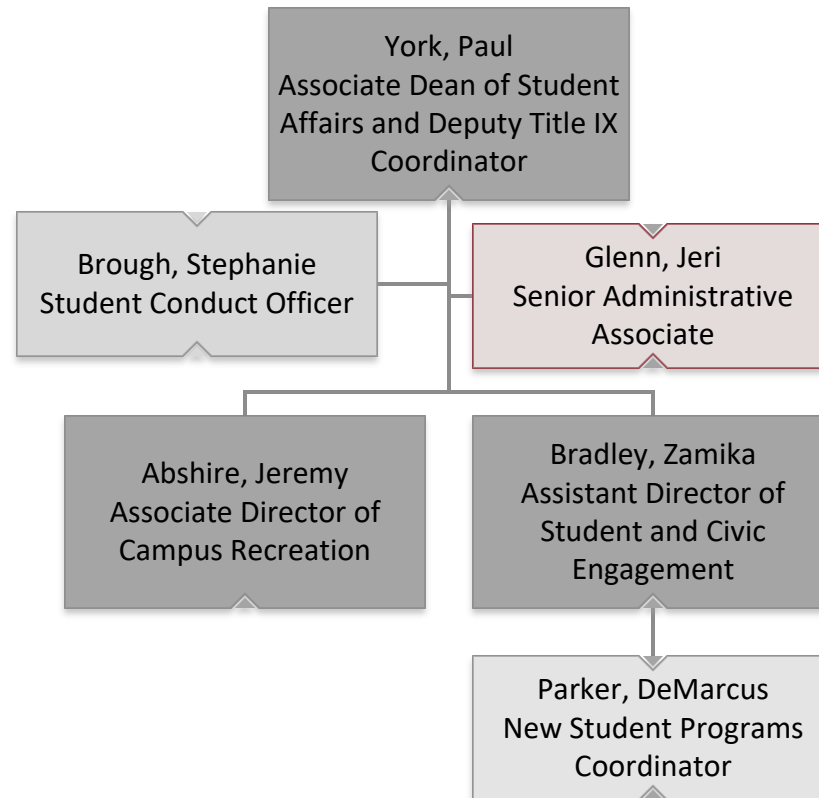


Student Affairs



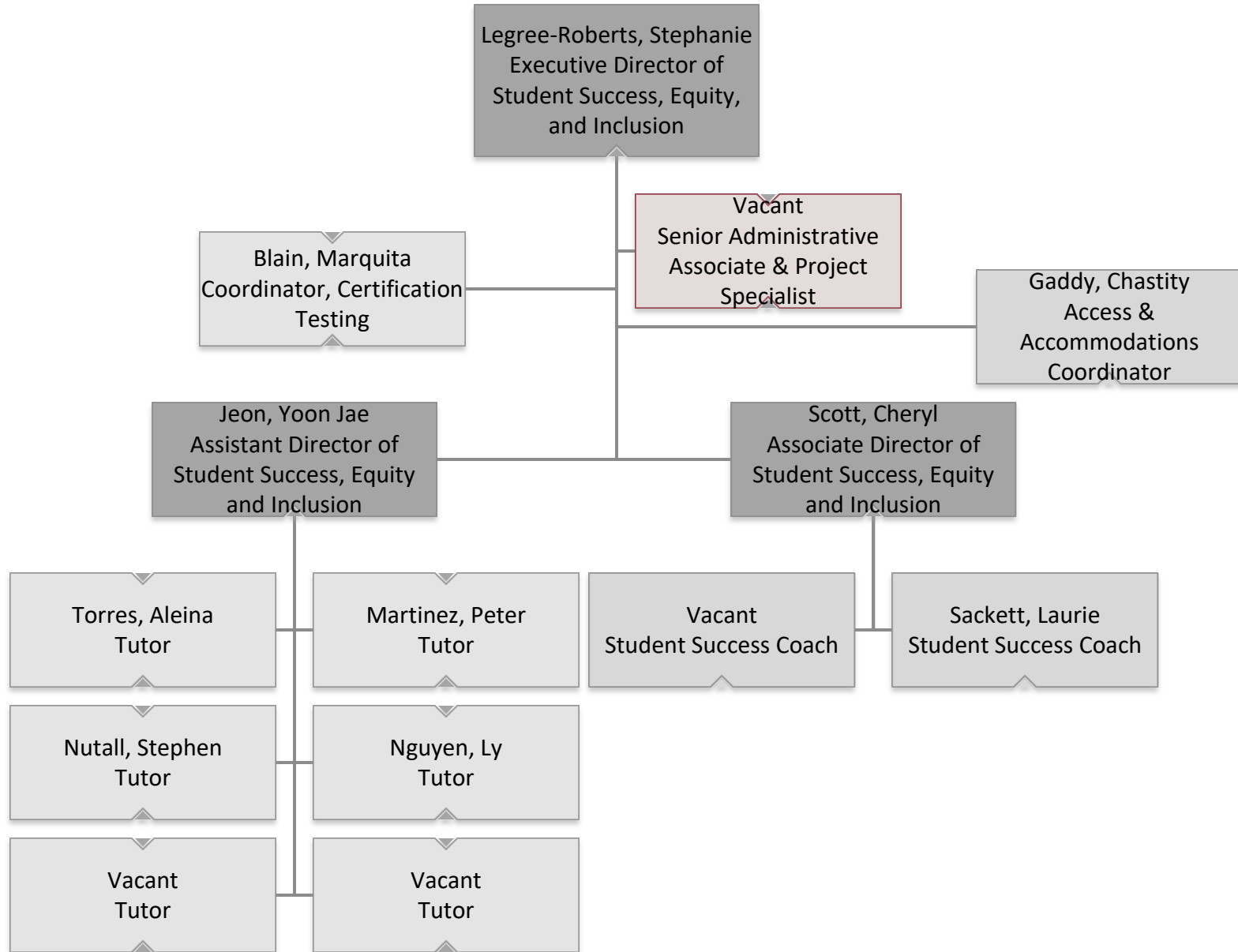


Student Affairs Associate Dean of Student Affairs



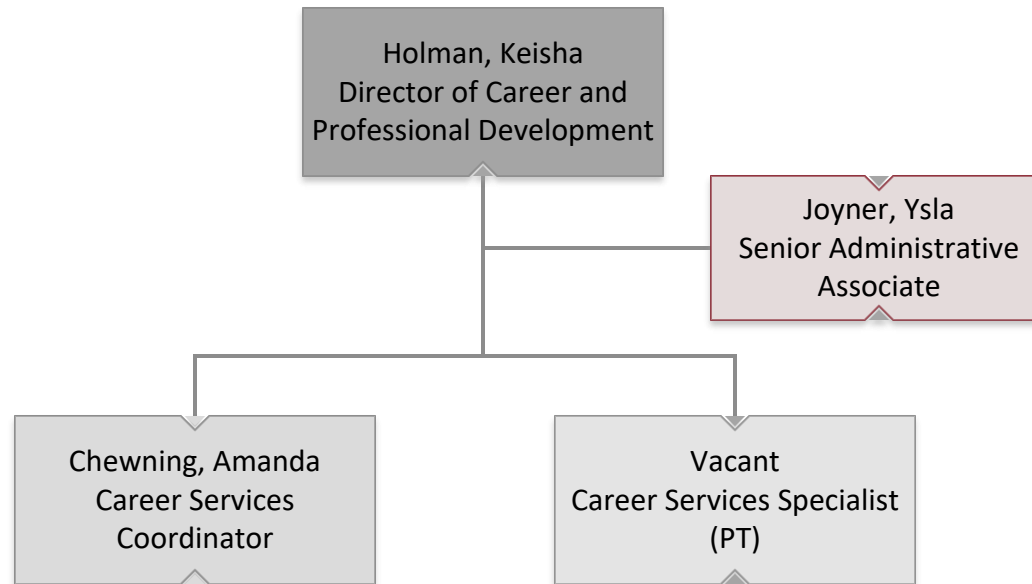


Student Affairs Student Success, Access and Inclusion



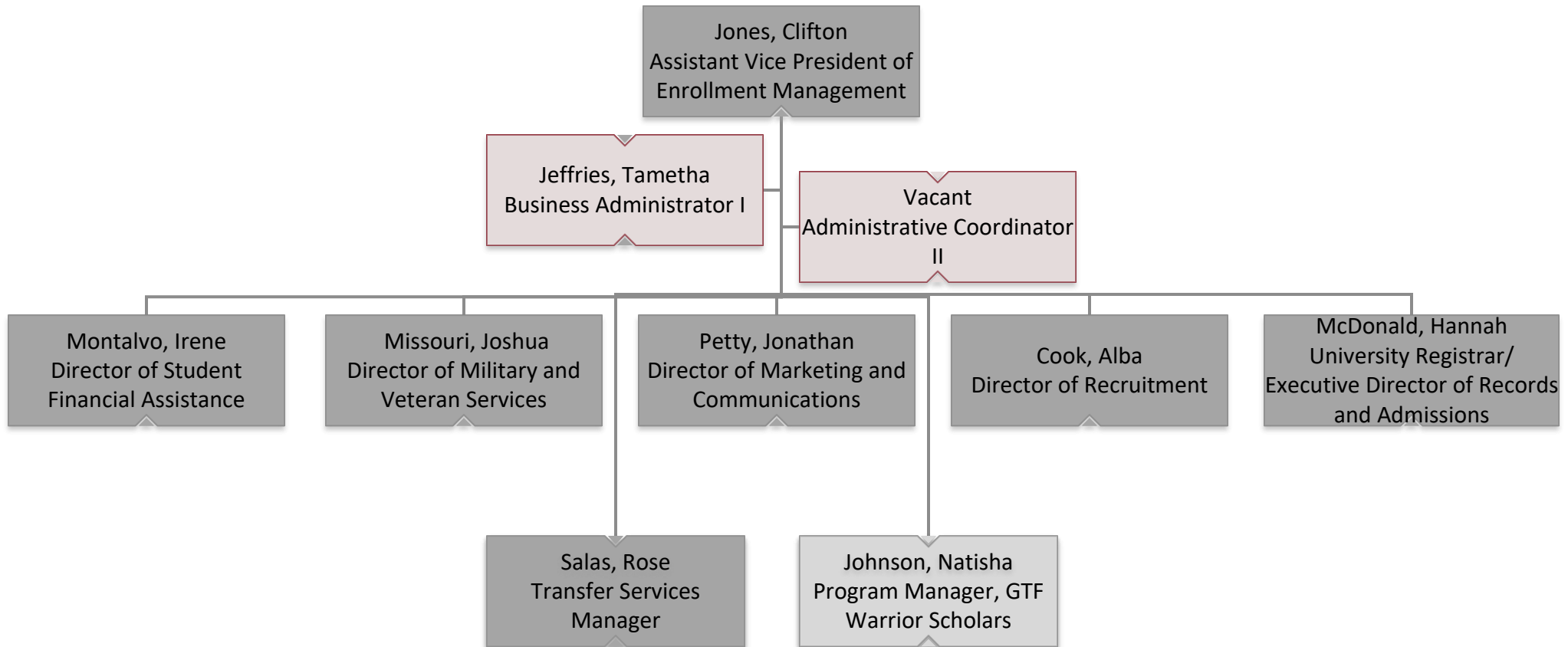


Student Affairs Career and Professional Development



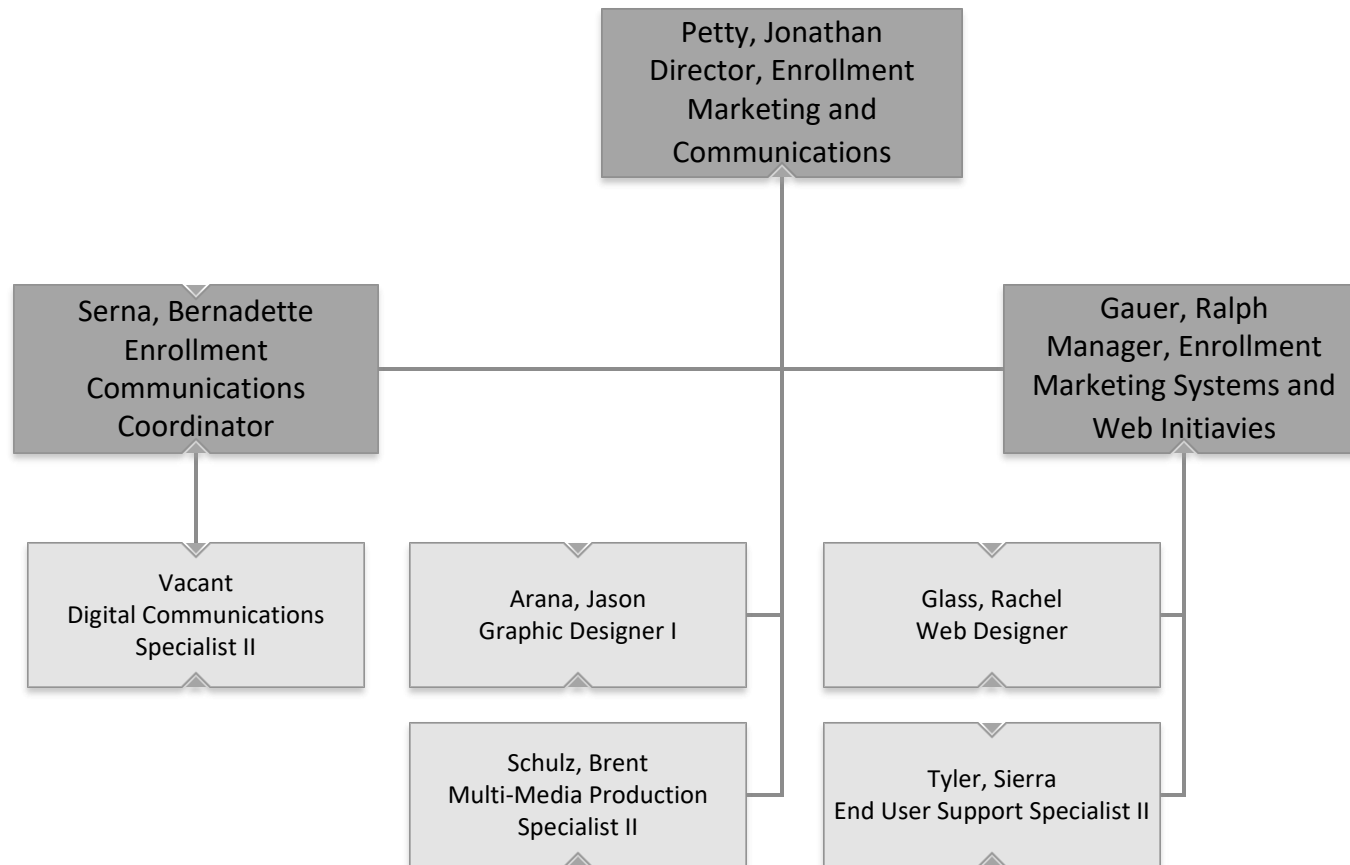


Enrollment Management



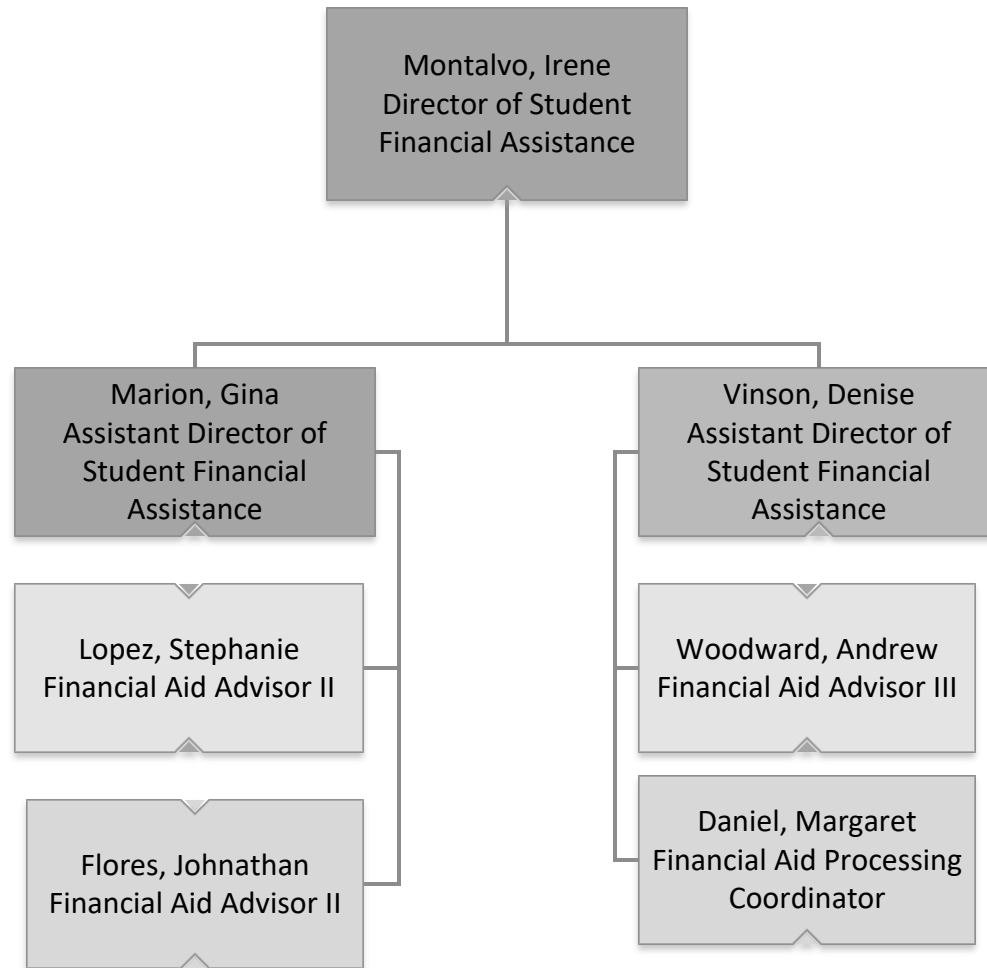


Enrollment Marketing and Communications



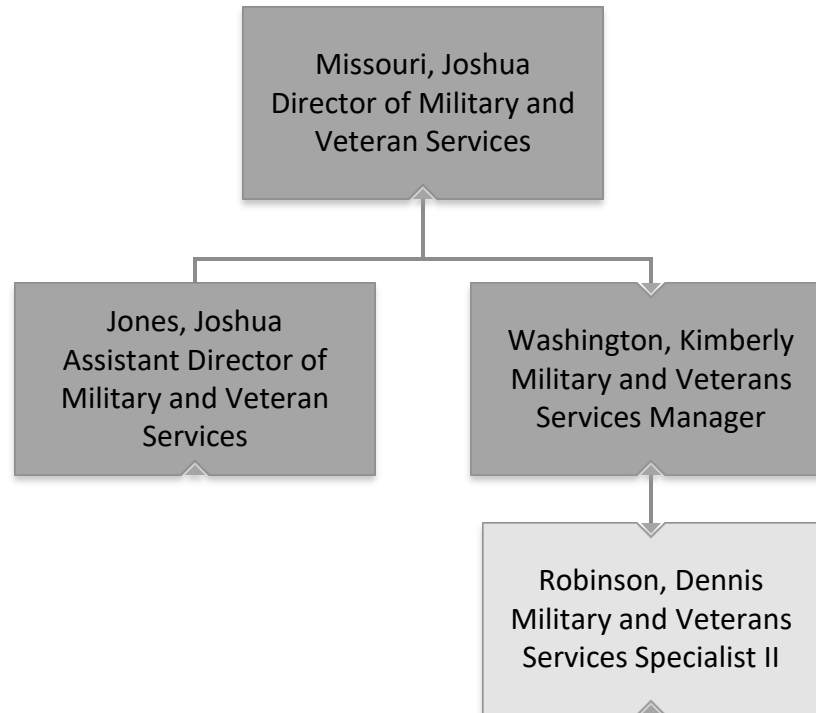


Student Financial Assistance



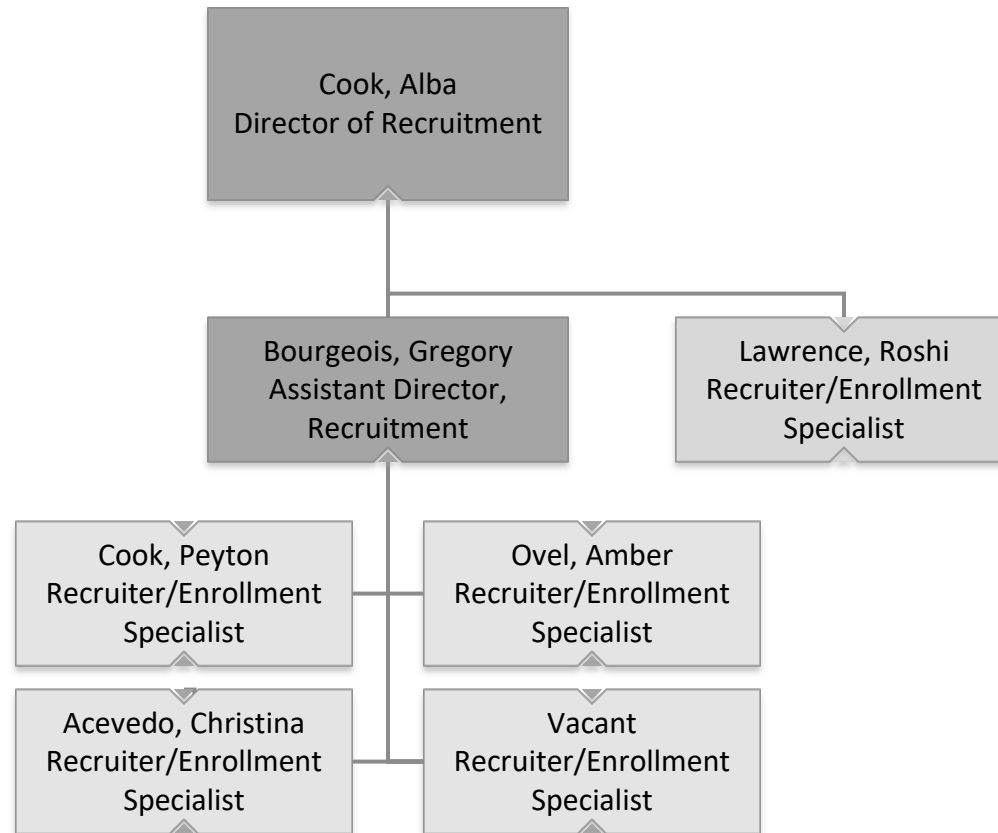


Military and Veteran Services



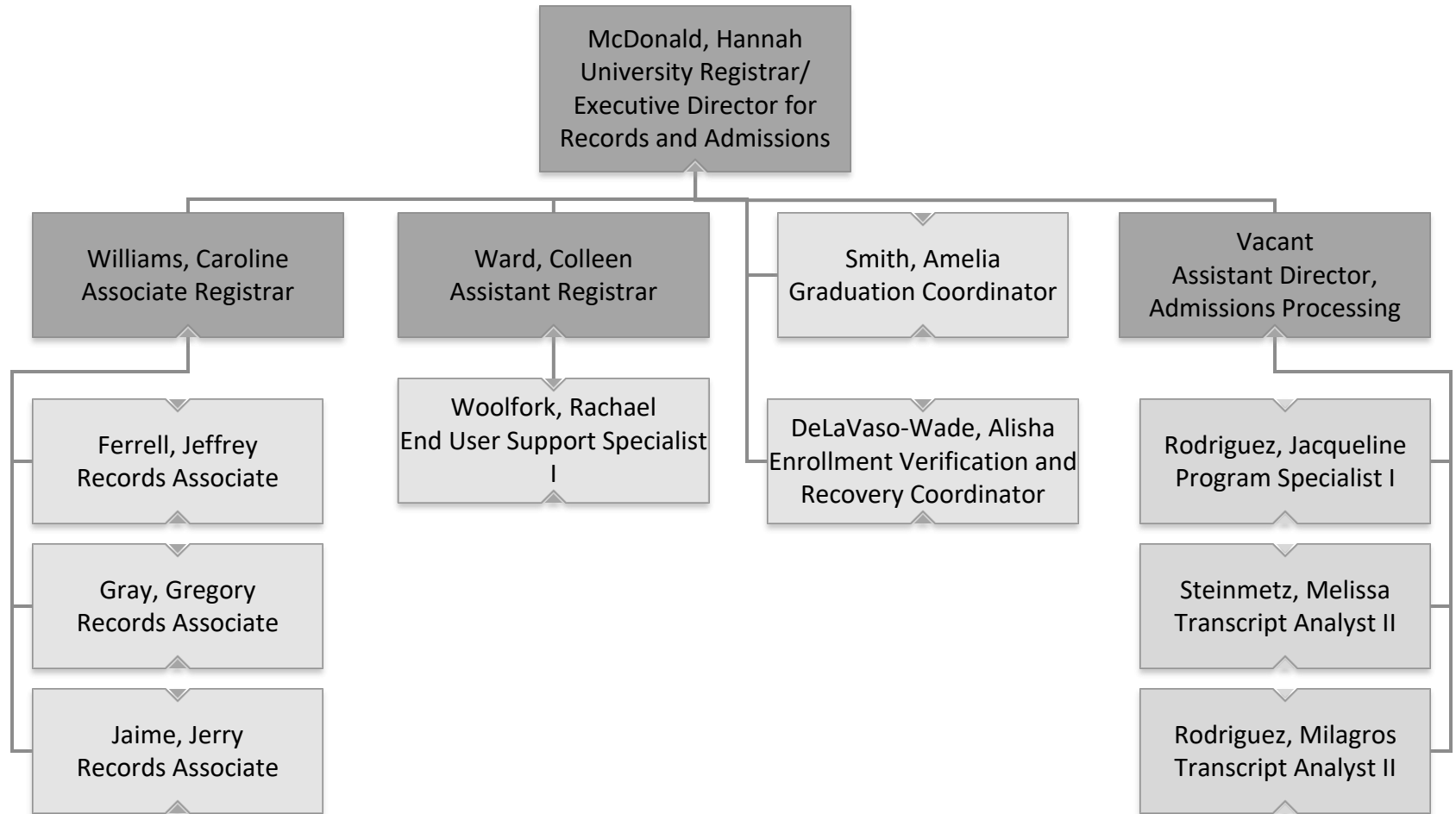


Recruitment and Enrollment Services



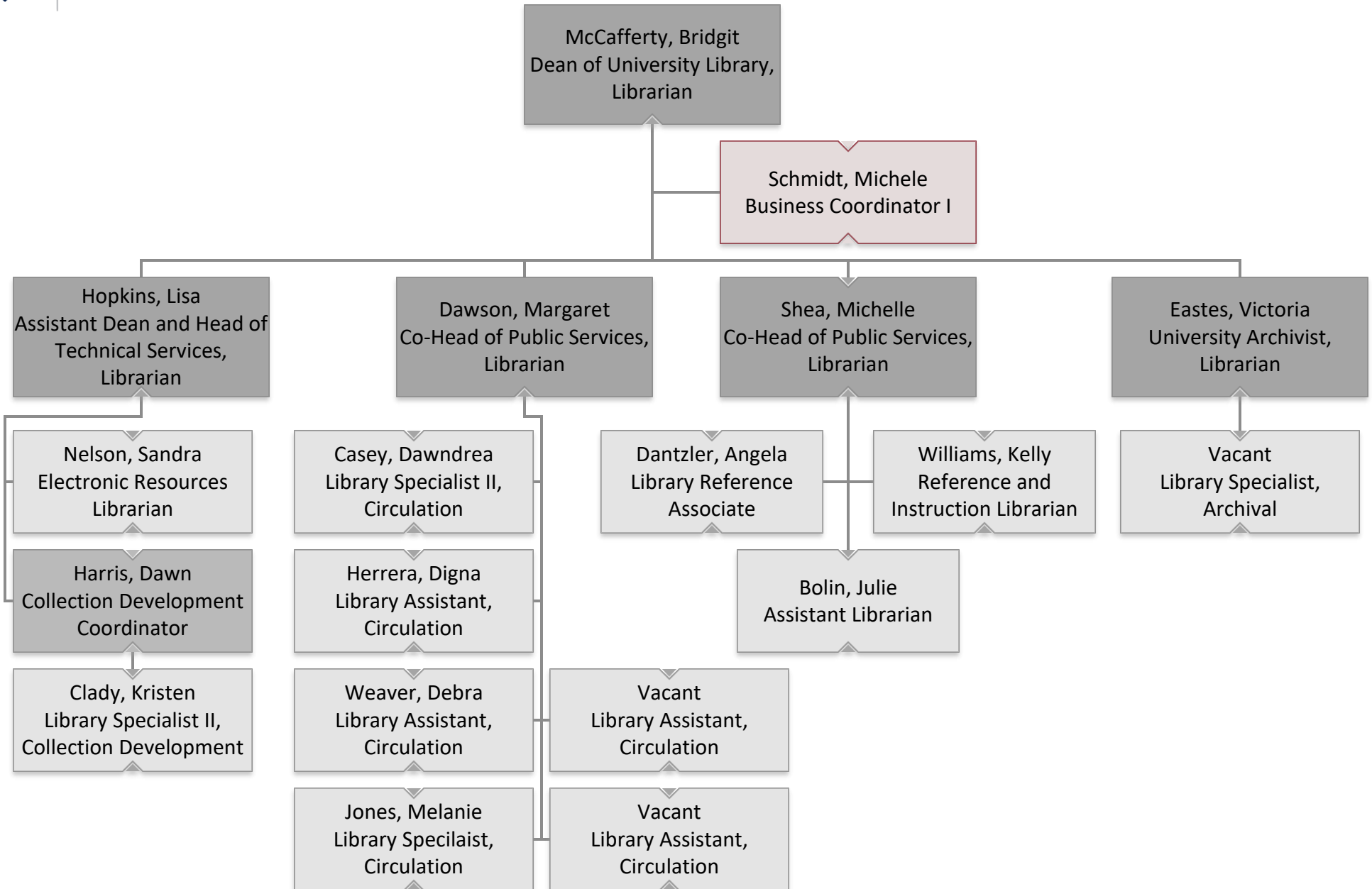


Records and Admissions



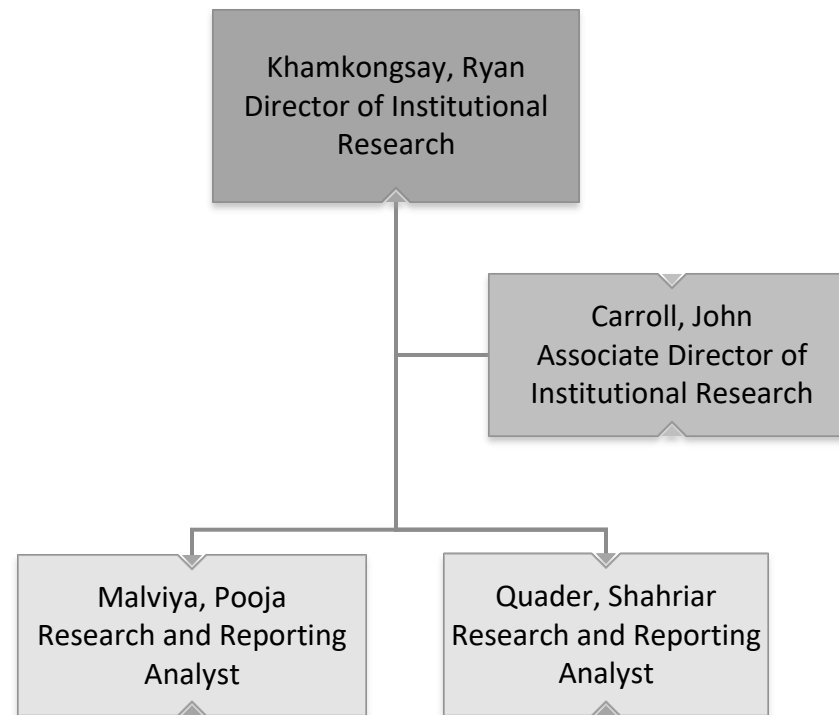


University Library



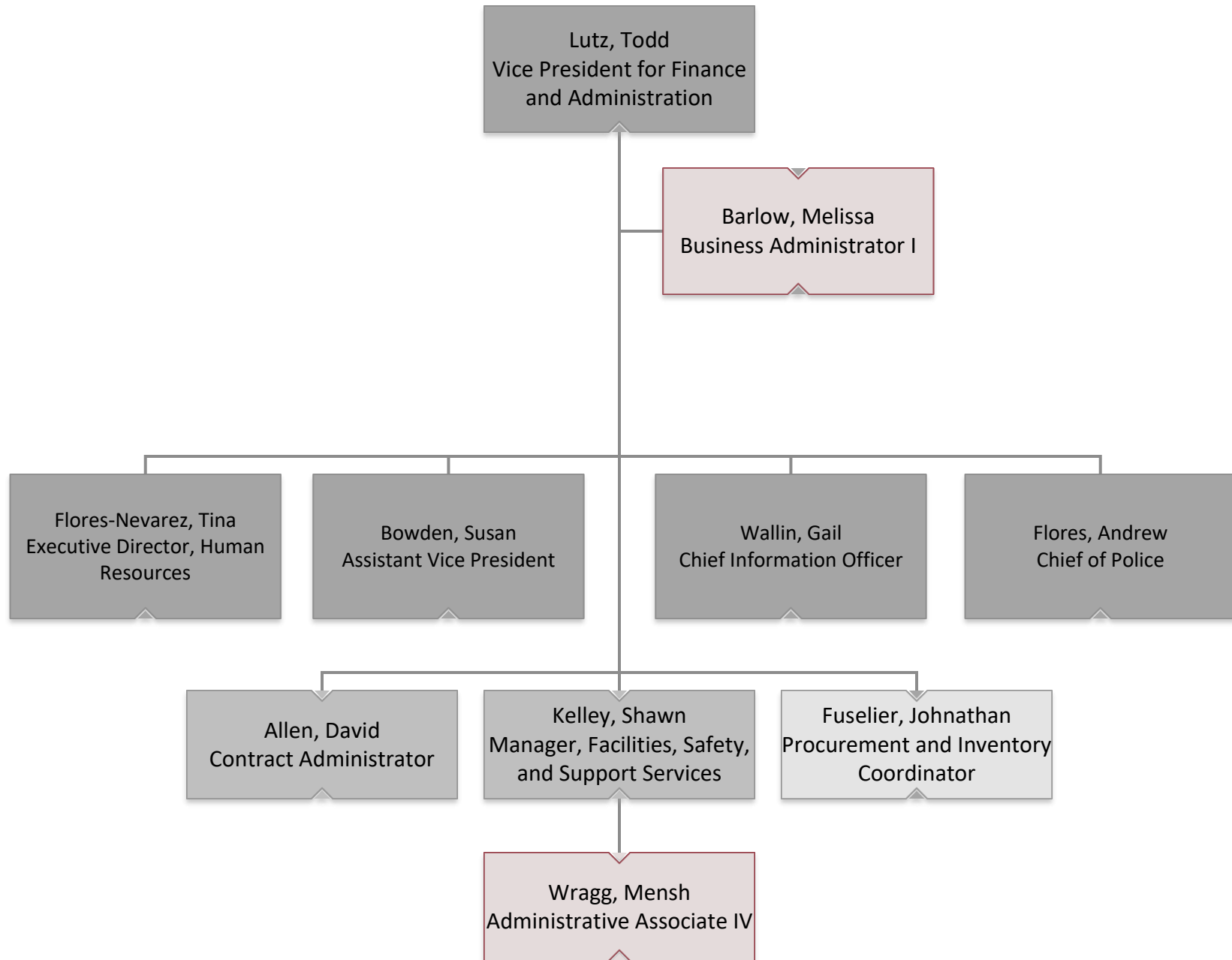


Institutional Research and Effectiveness



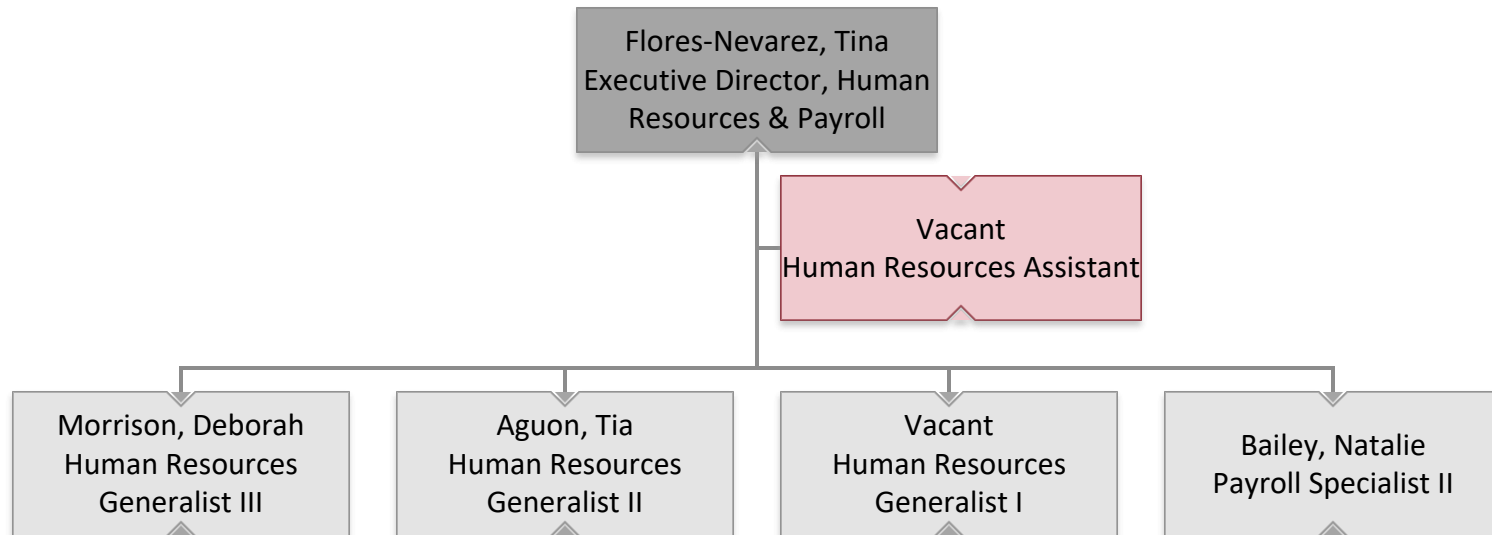


Vice President for Finance and Administration



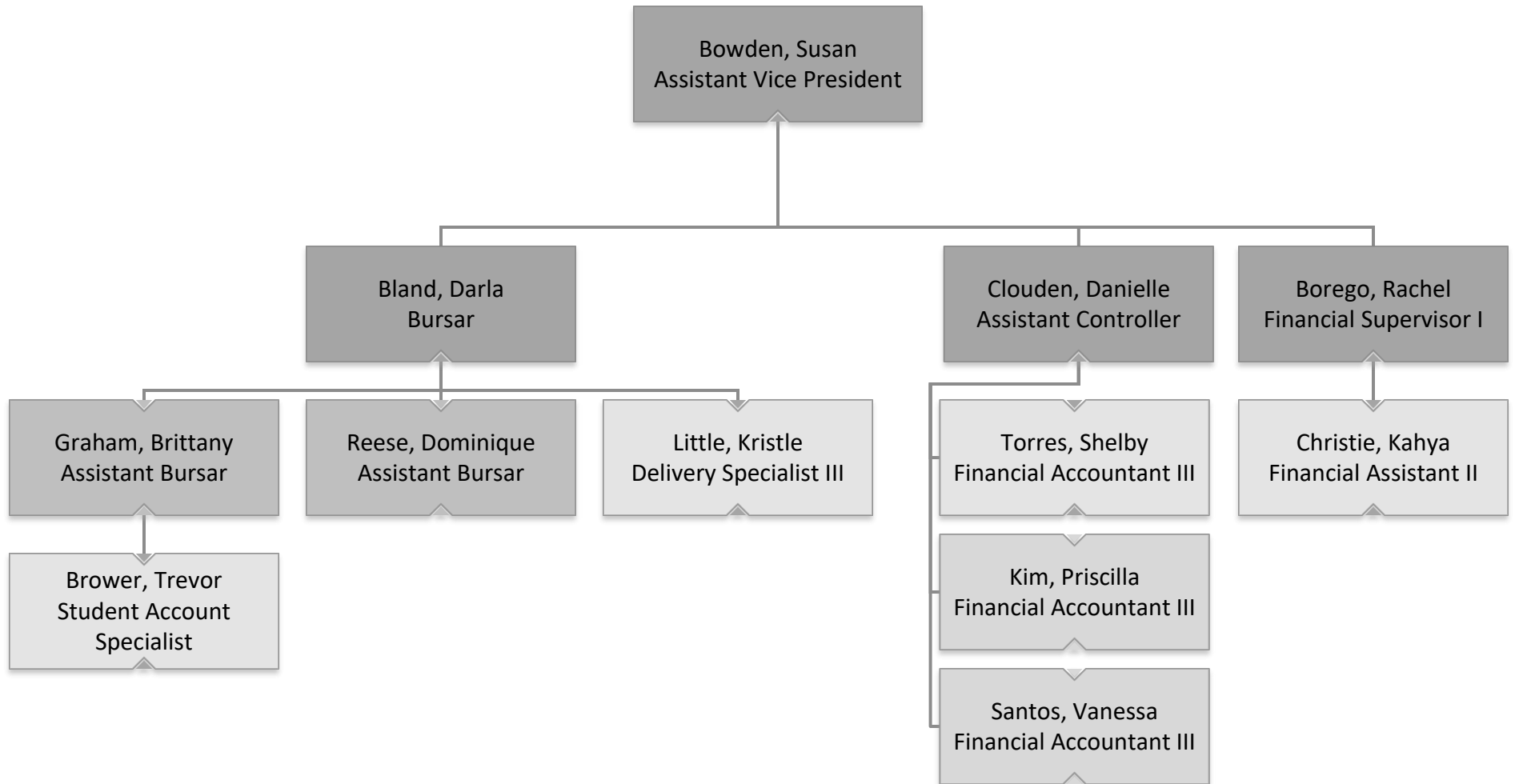


Human Resources



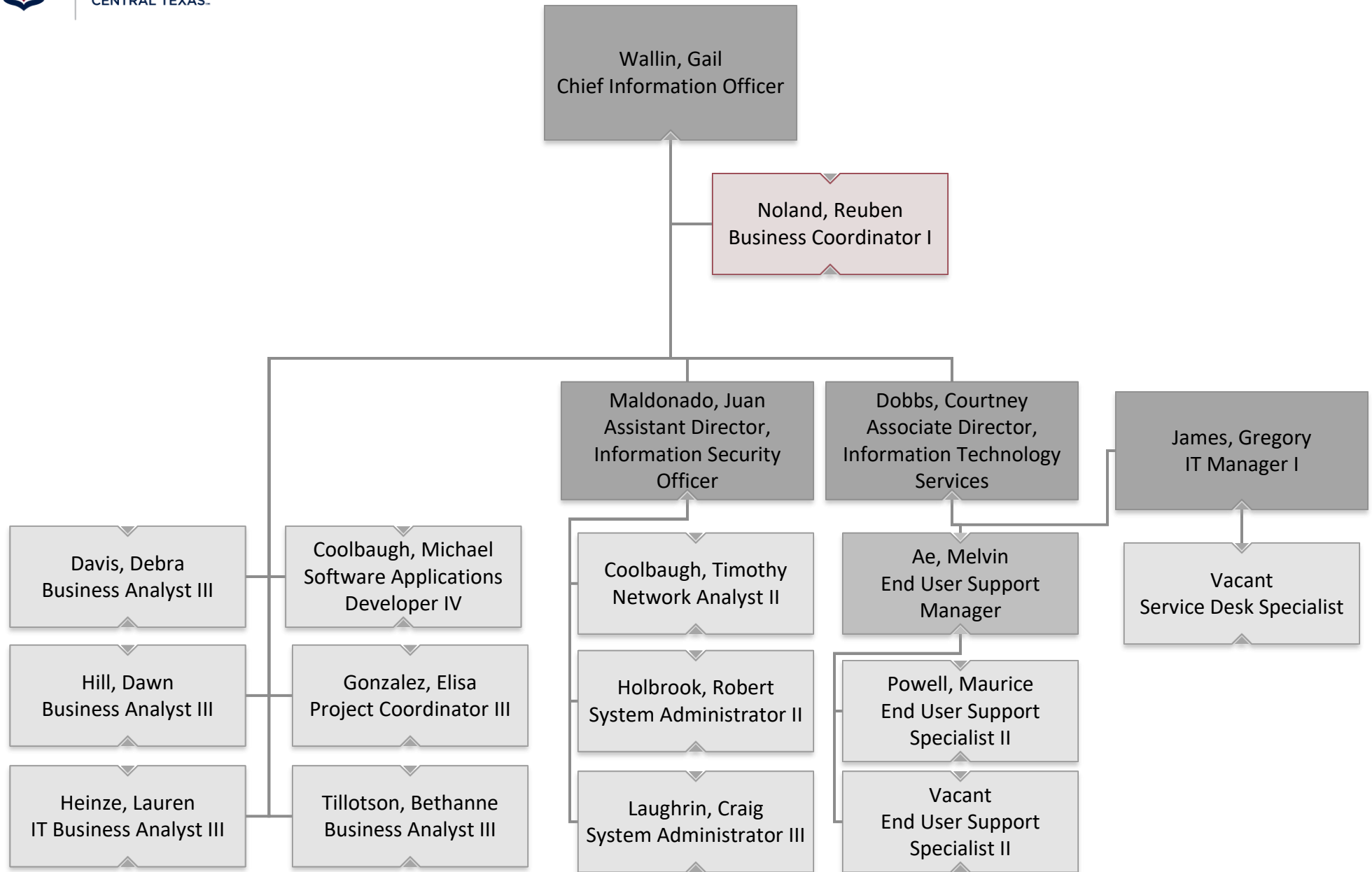


Business Affairs



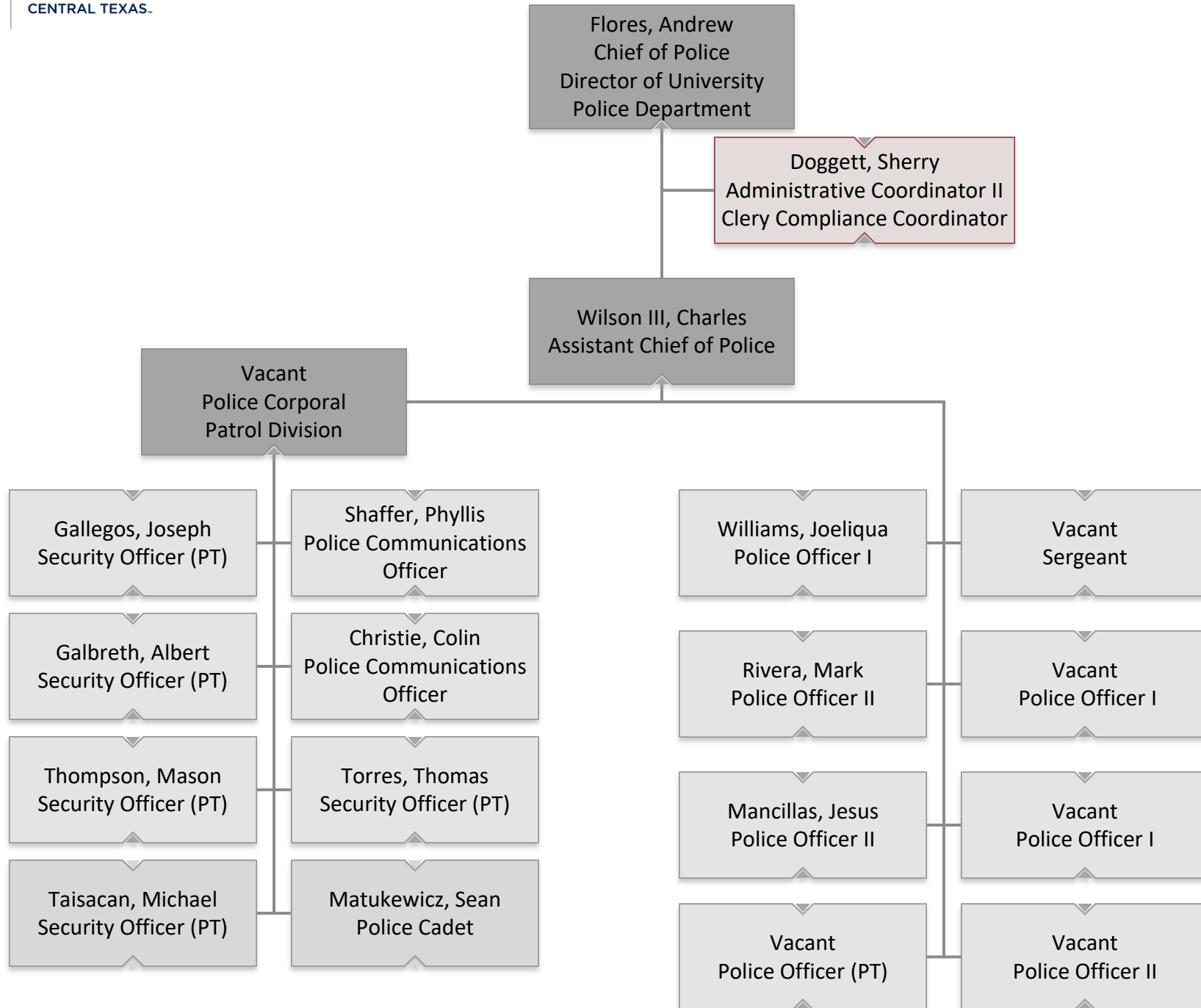


Information Technology





University Police





Office of Research, Economic Development, and Innovation

Porter, Russell
Vice President for Research and Economic
Development (IO)
Chief Research Officer (CRO)
Research Compliance Officer (RCO)

Frederick, Shewanna La Treice
Executive Assistant to the Vice
President

