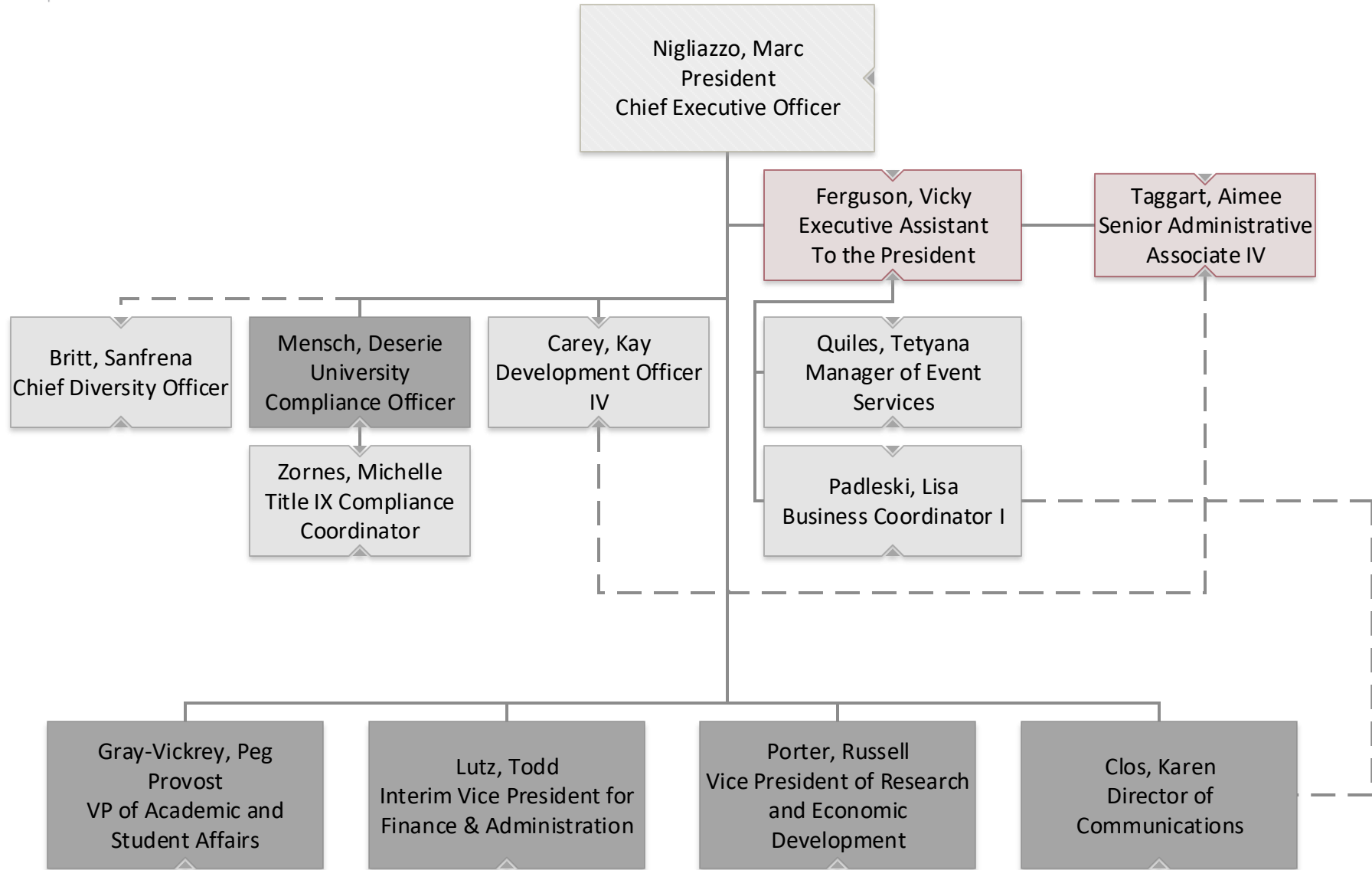




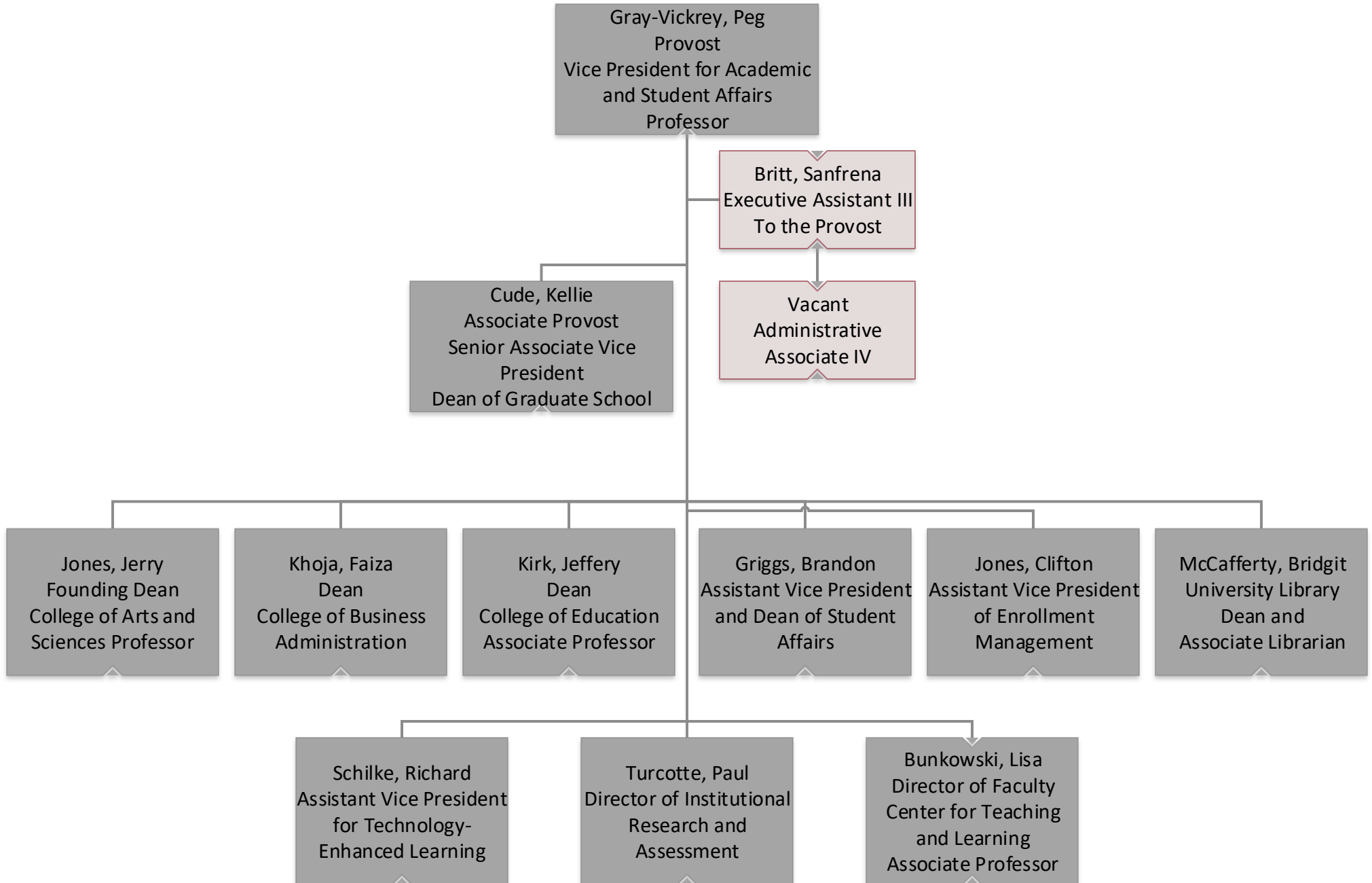
Office of the President





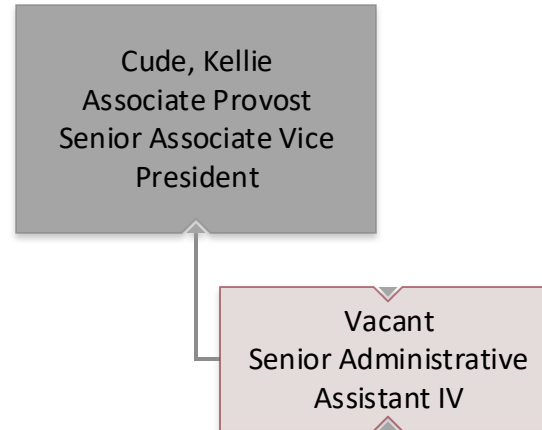
Provost

Vice President for Academic and Student Affairs



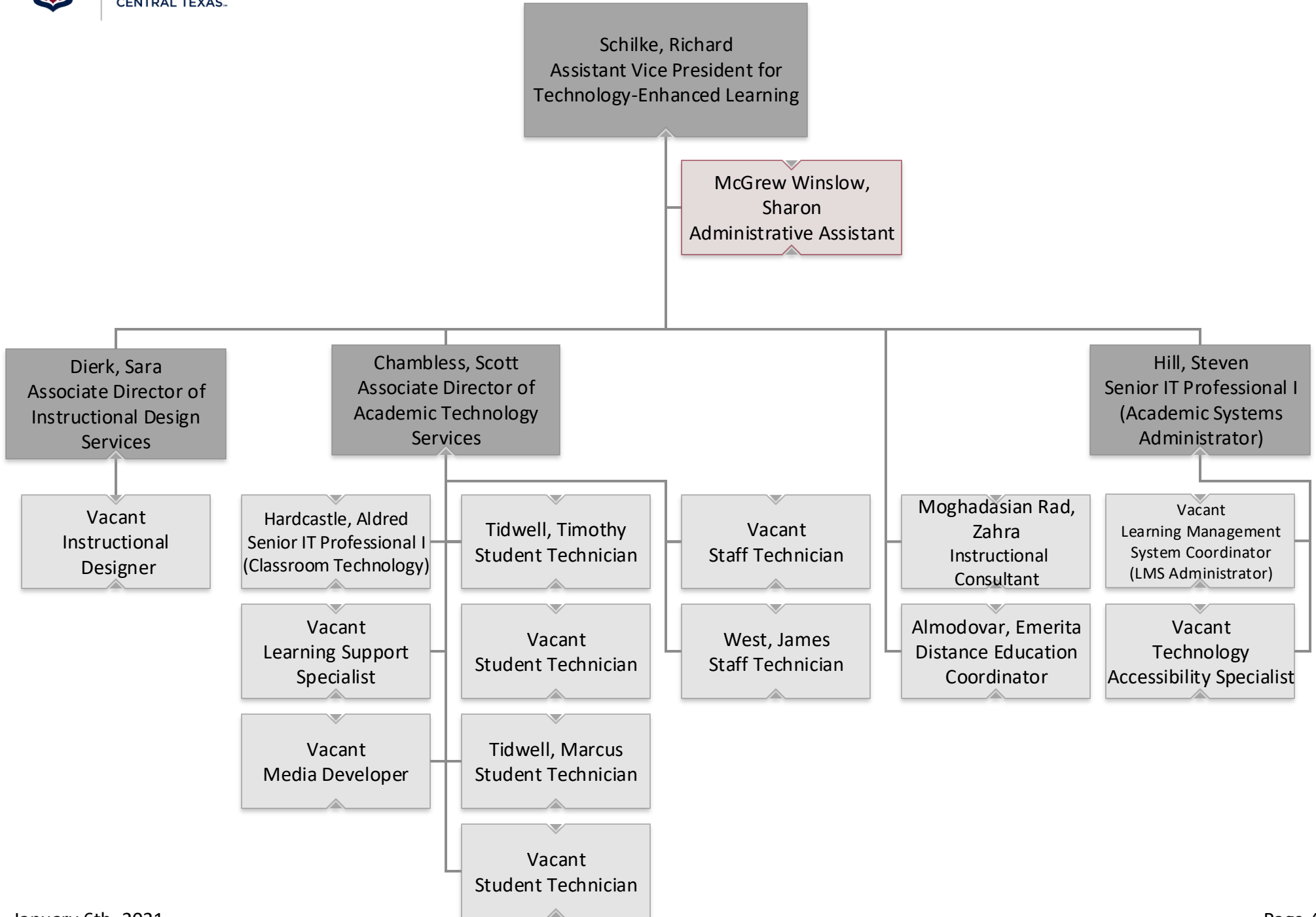


Academic Affairs and Undergraduate Studies



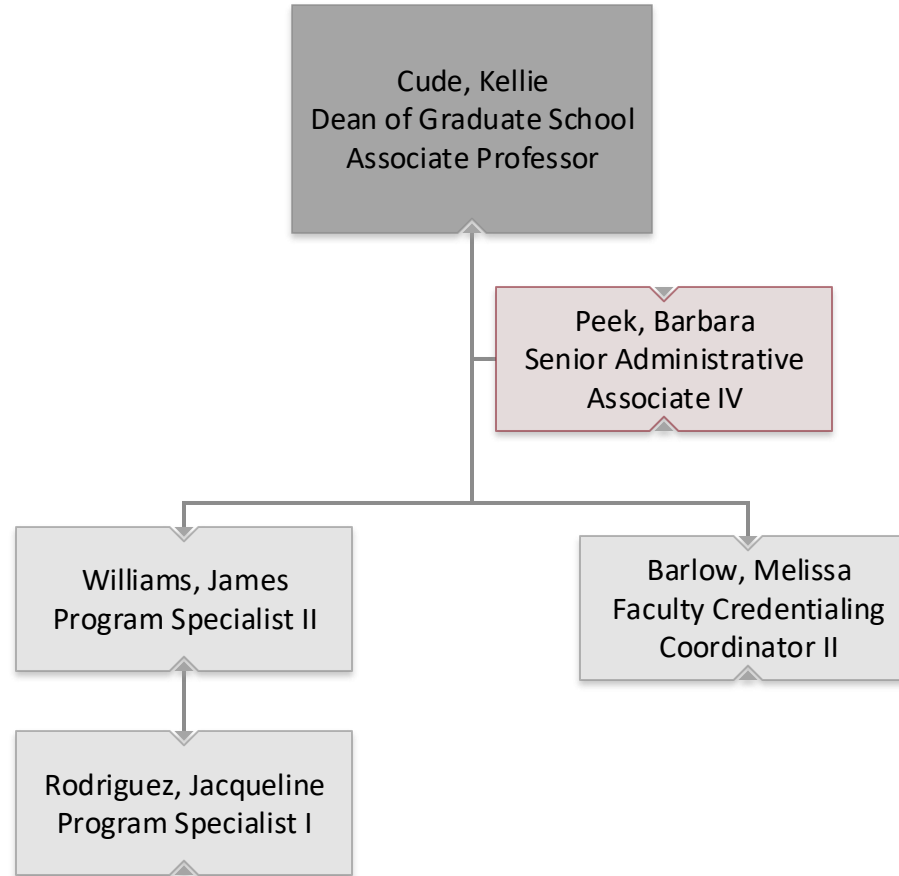


Technology Enhanced Learning



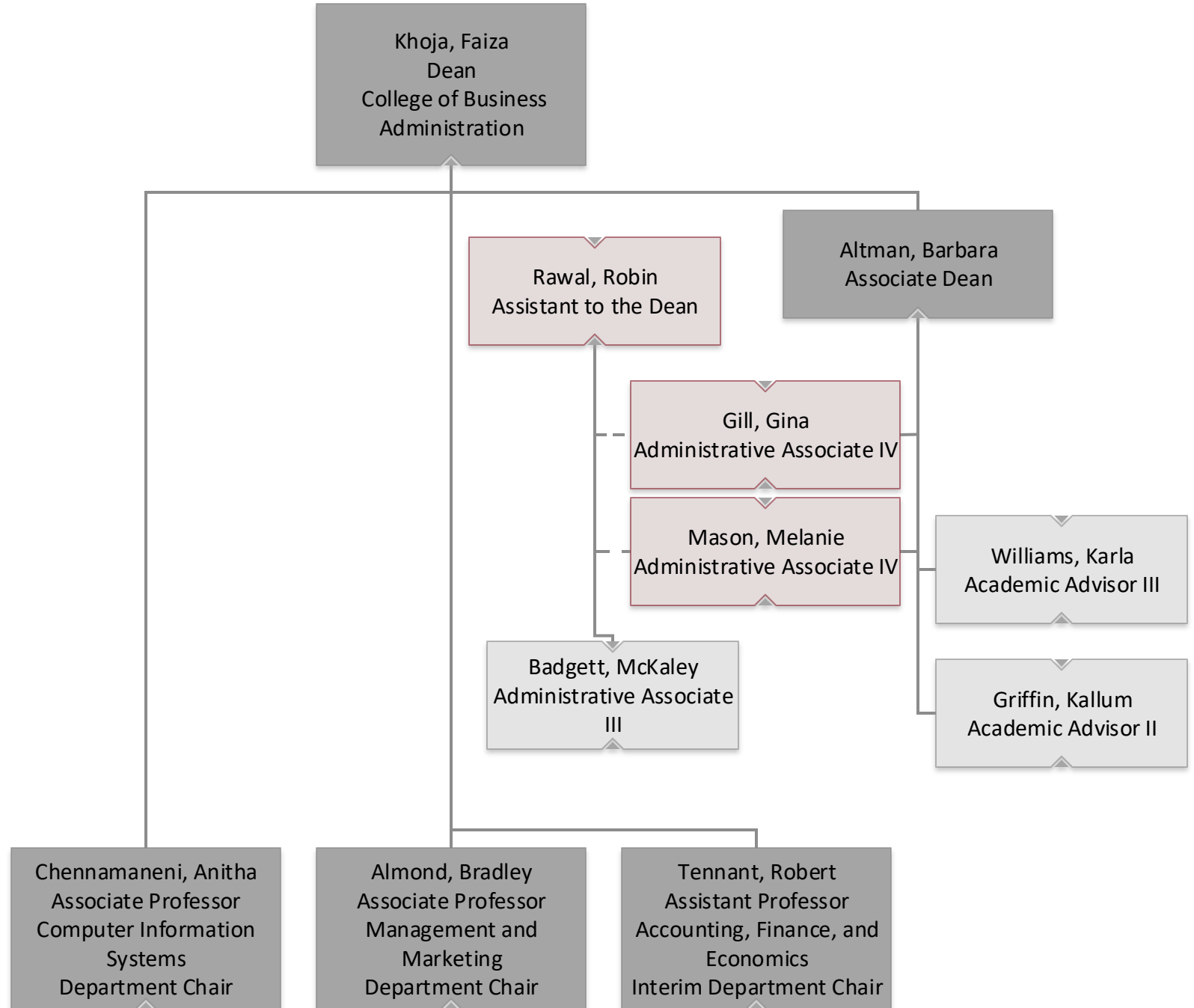


Graduate School



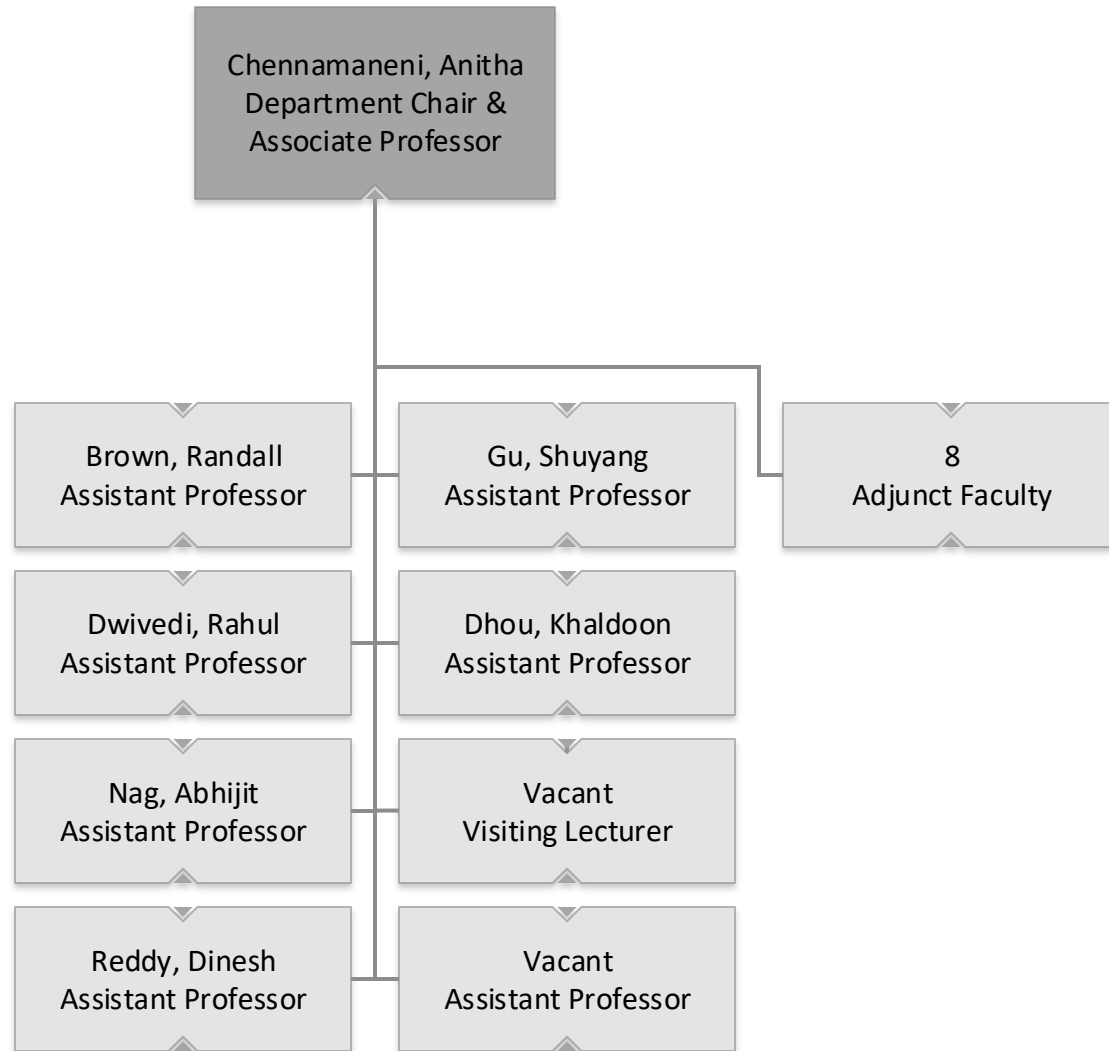


College of Business Administration



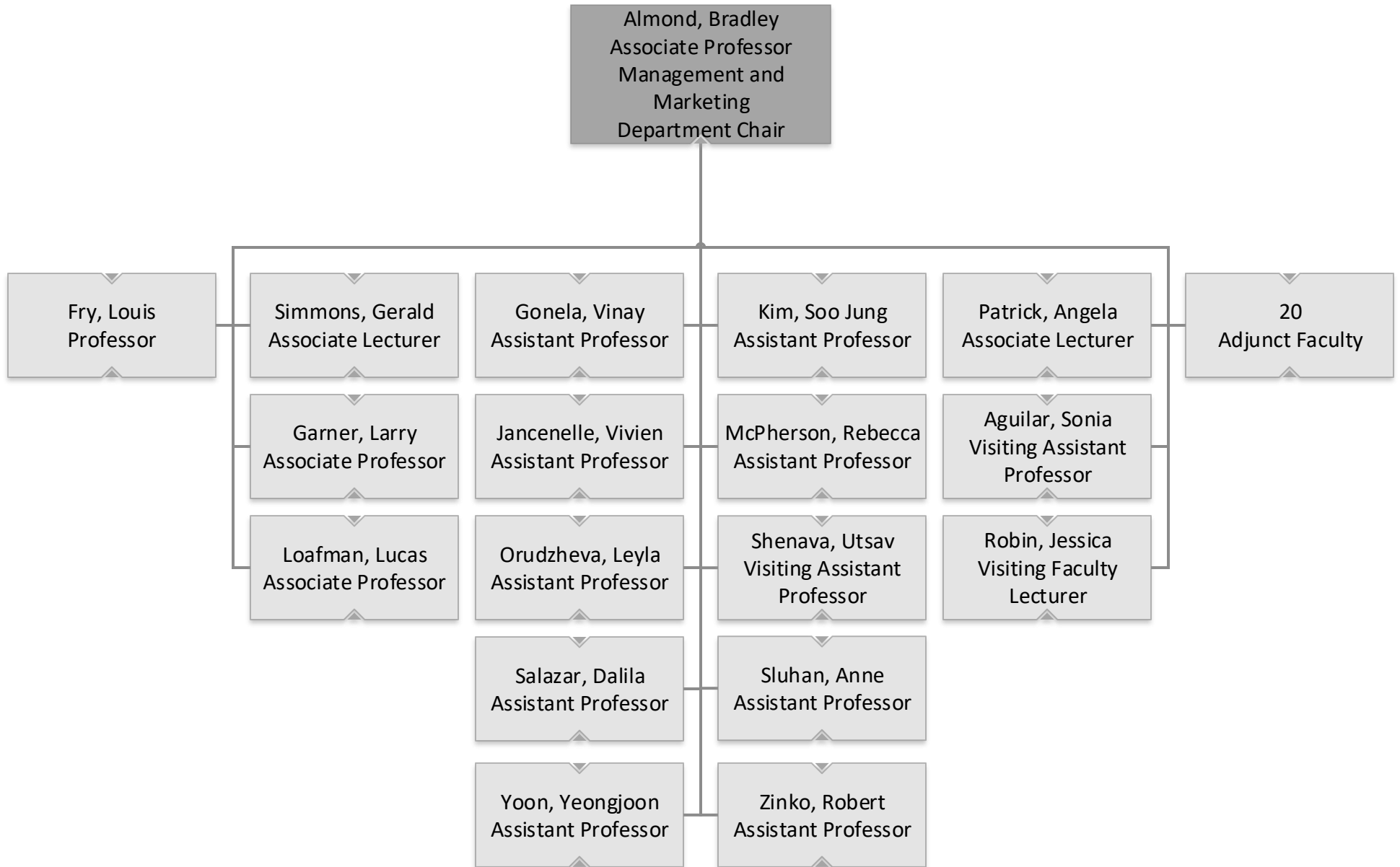


College of Business Administration Computer Information Systems



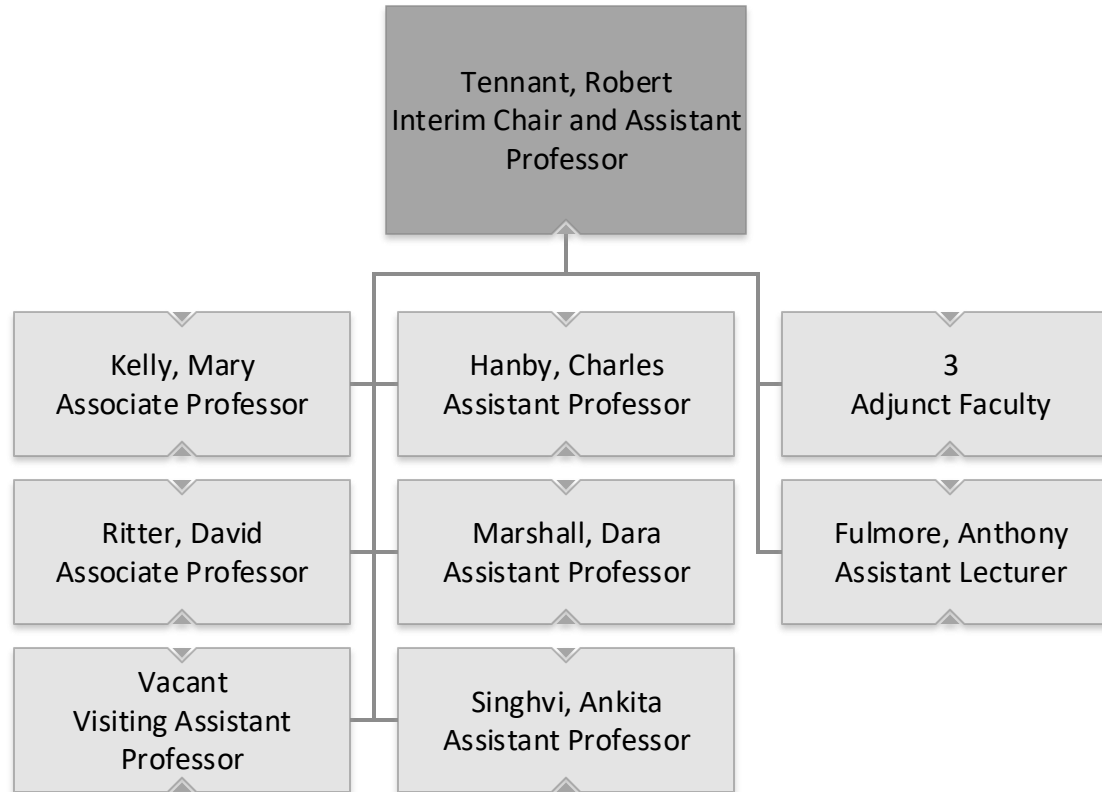


College of Business Administration Management and Marketing



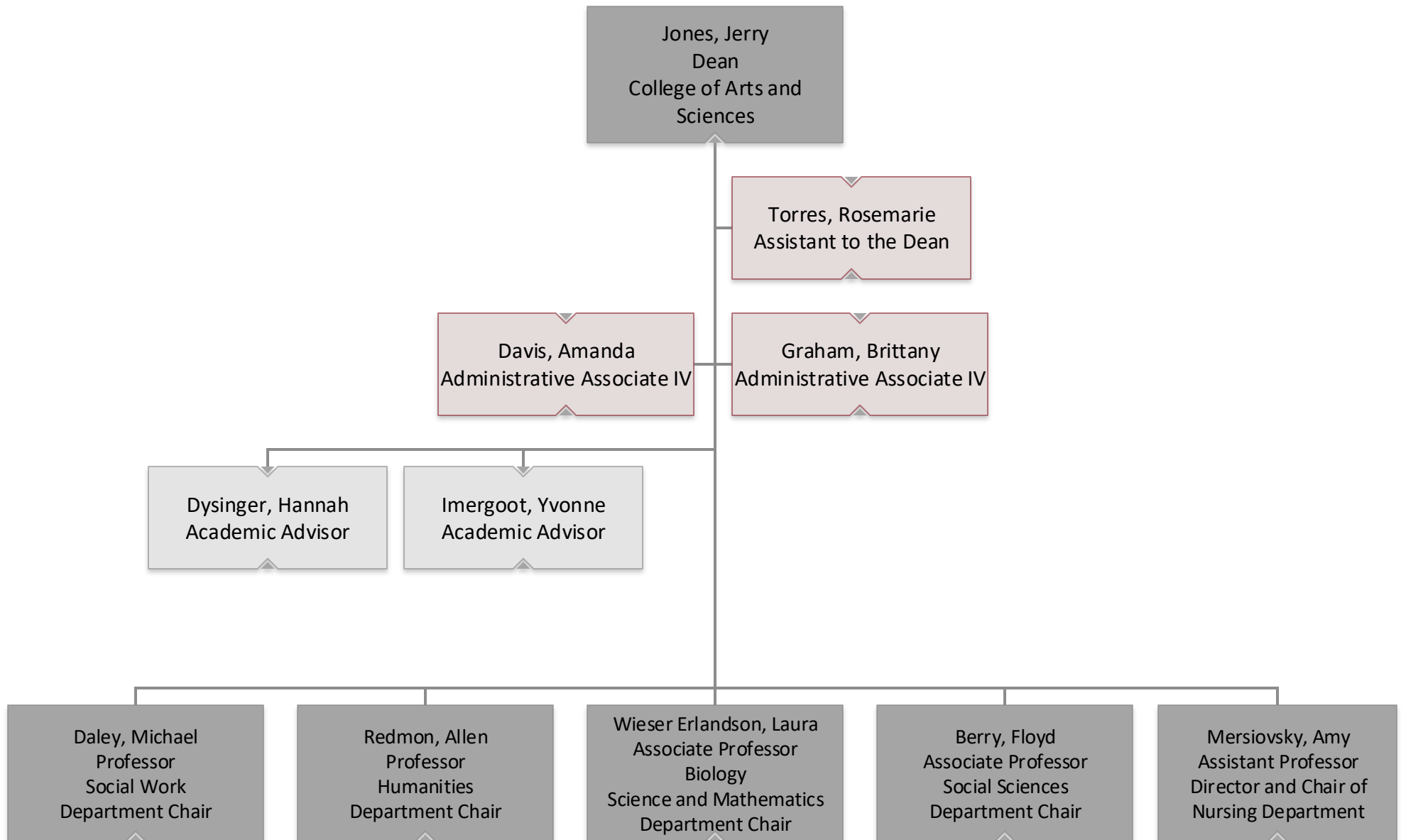


College of Business Administration Accounting, Finance, and Economics



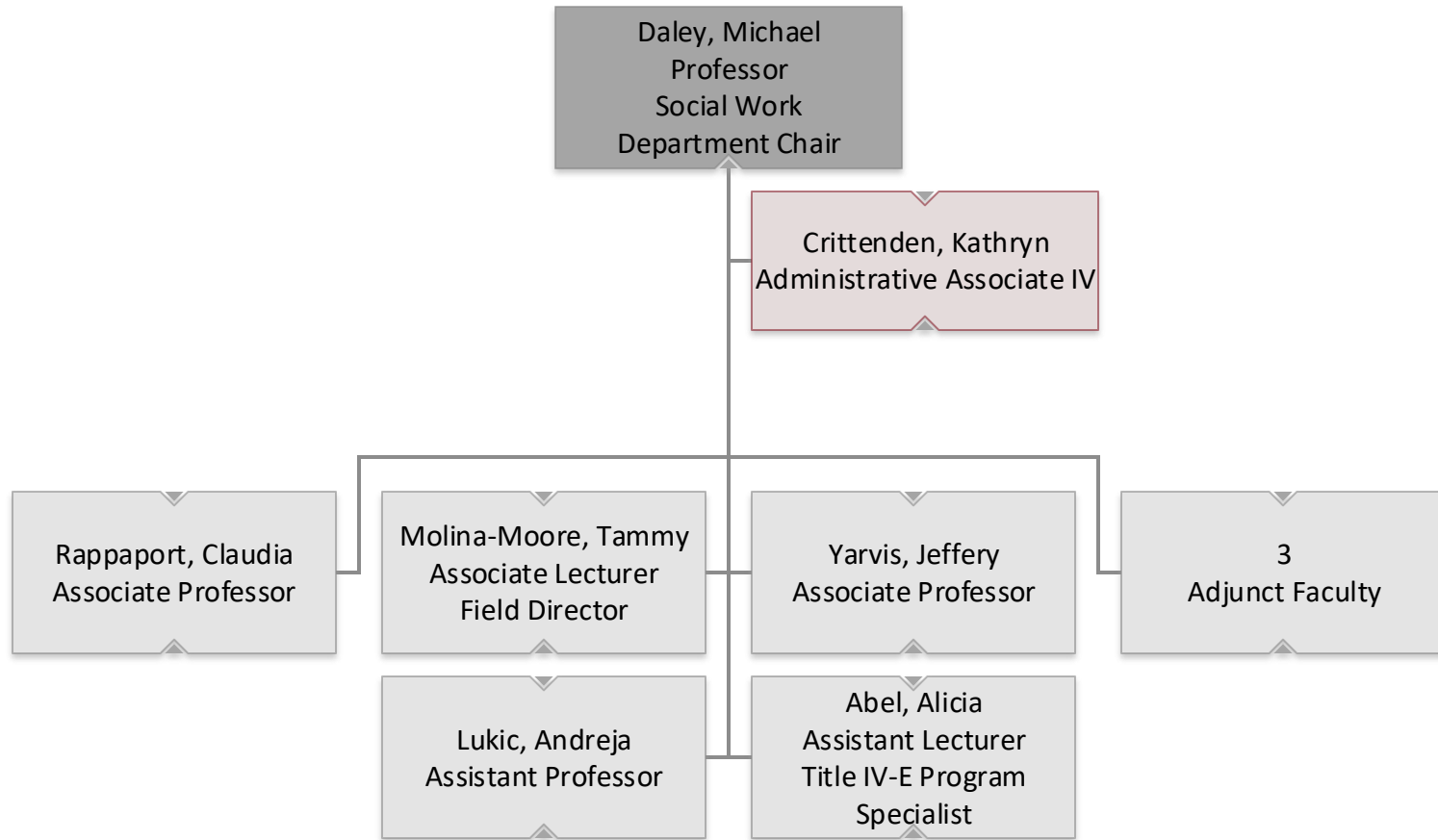


College of Arts and Sciences



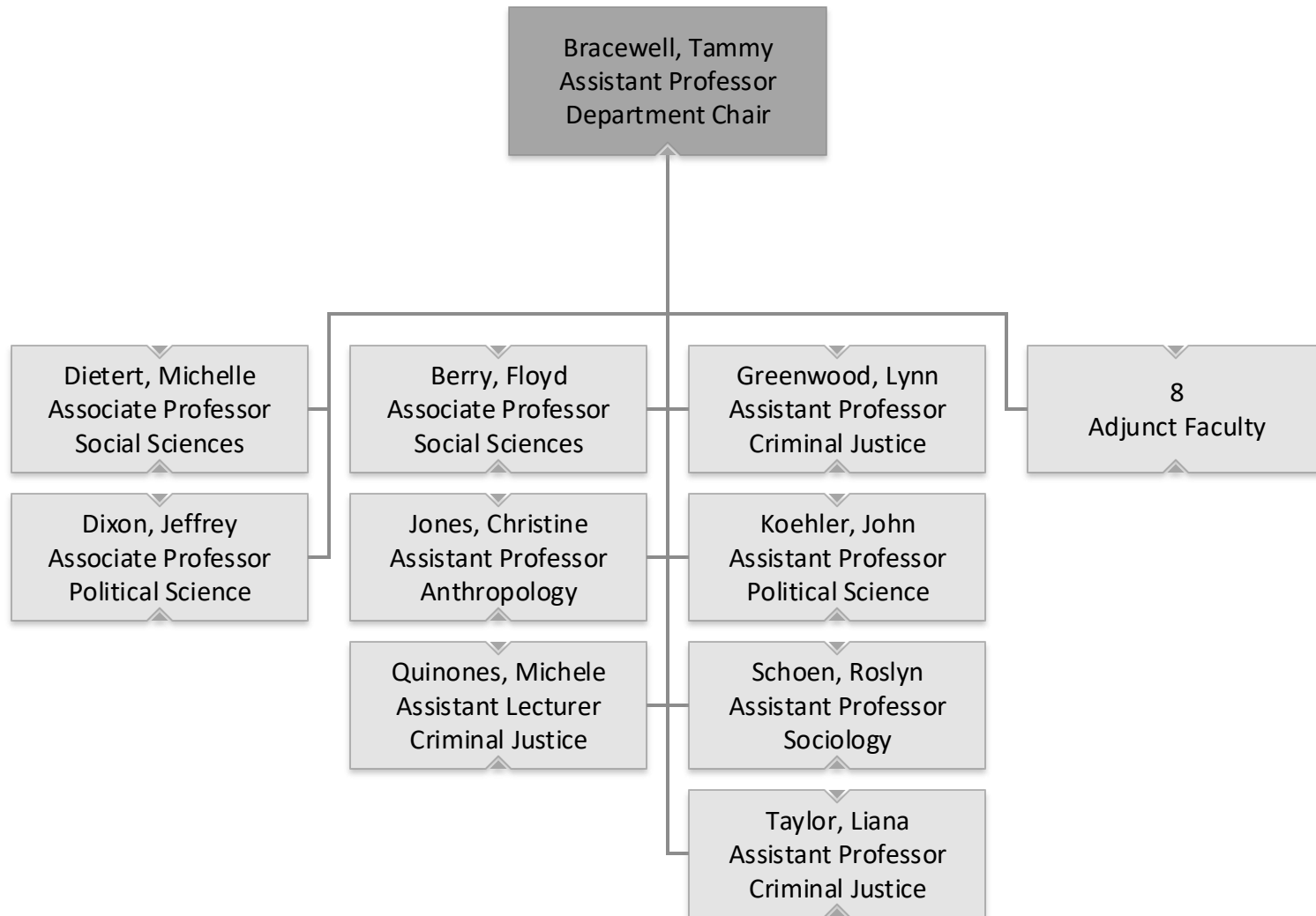


College of Arts and Sciences Social Work



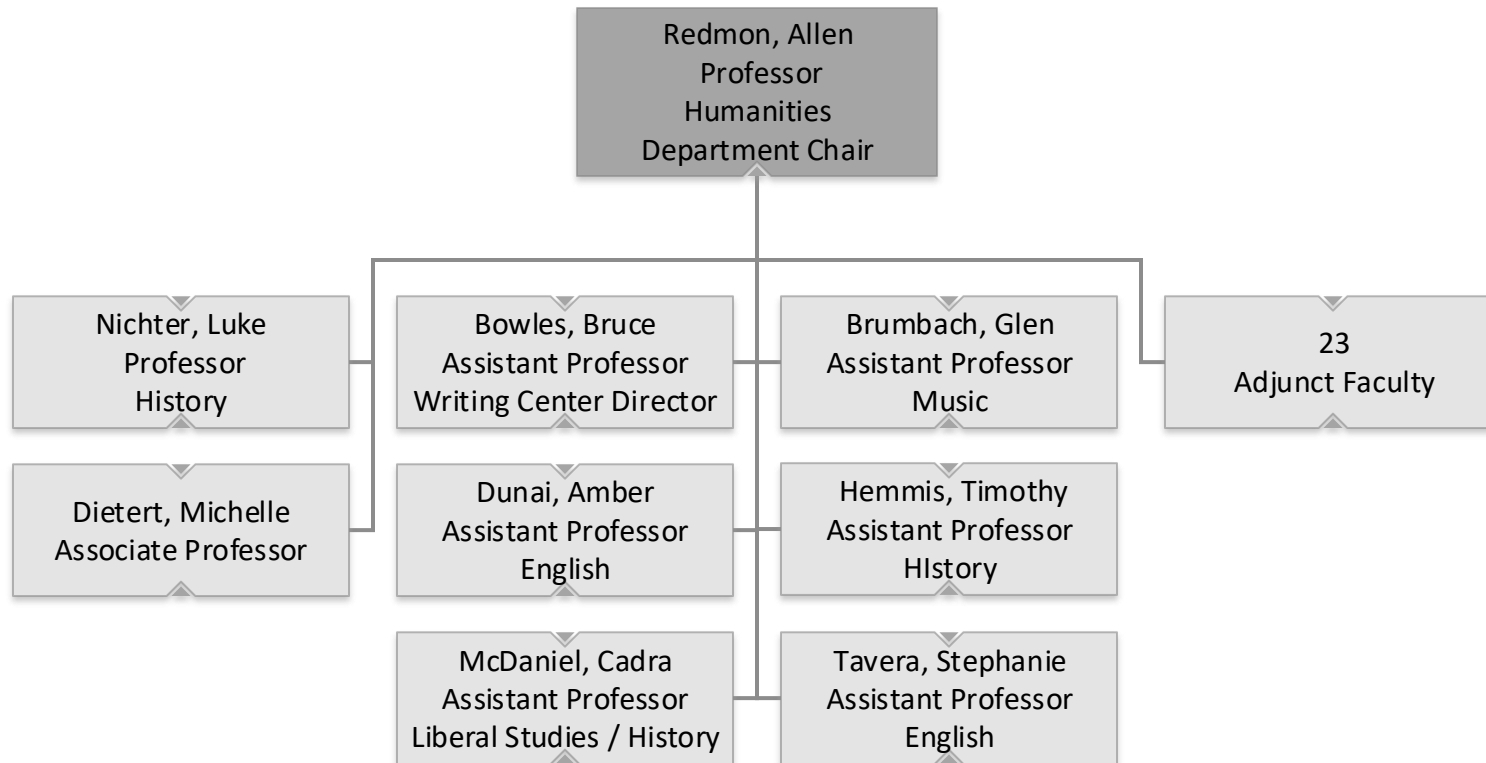


College of Arts and Sciences Social Sciences



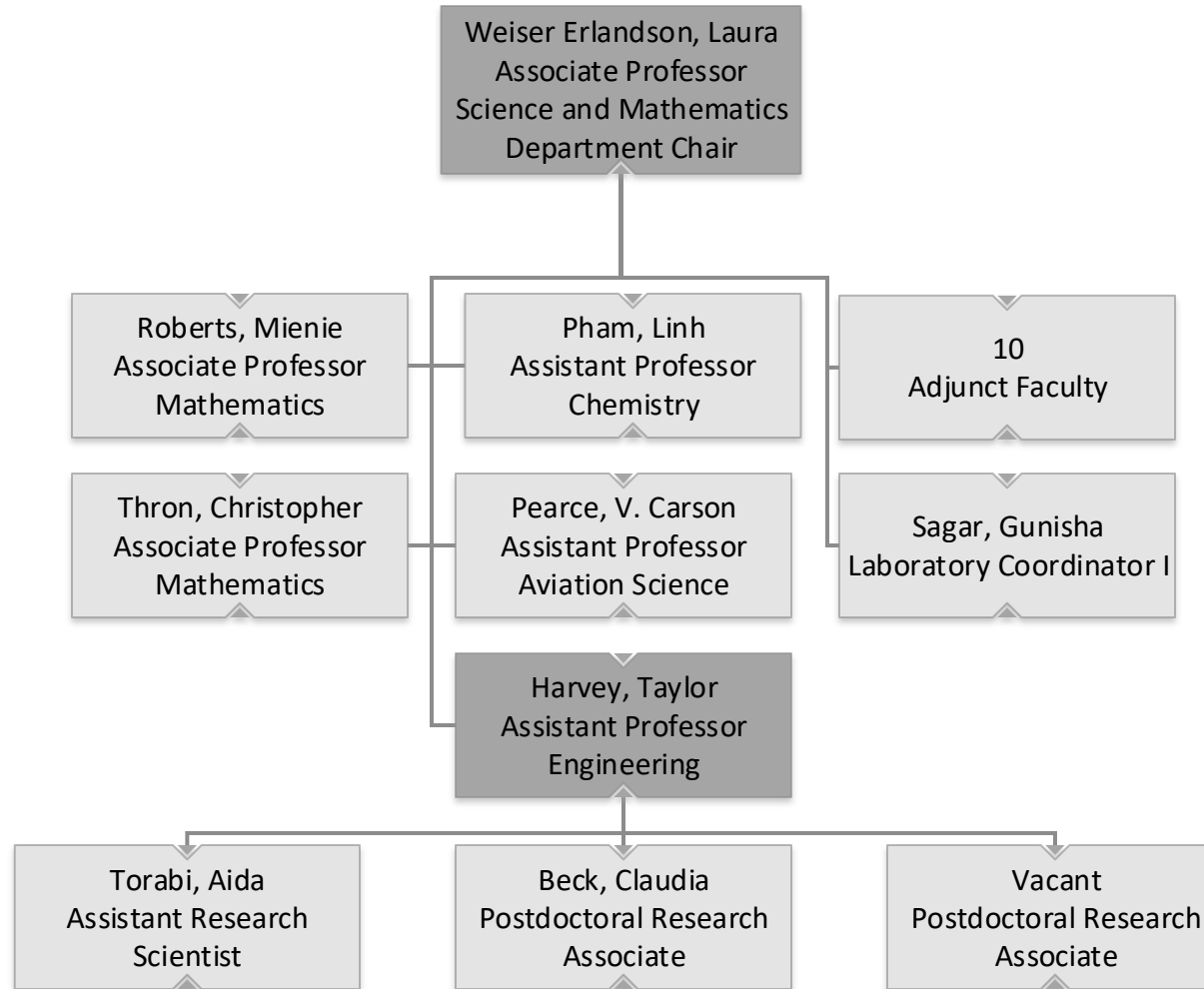


College of Arts and Sciences Humanities



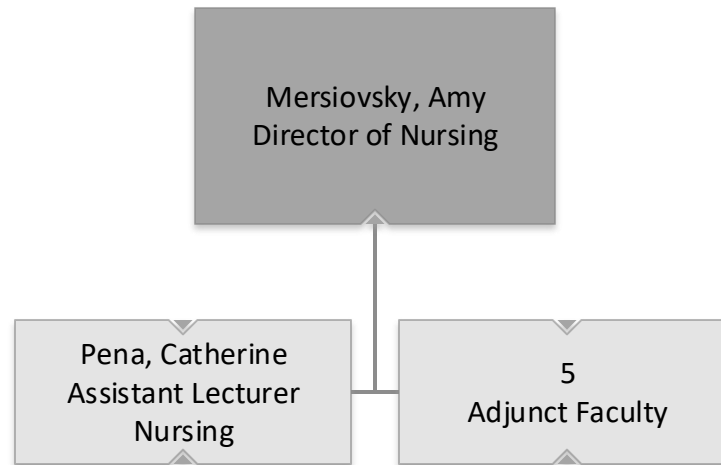


College of Arts and Sciences Science and Mathematics



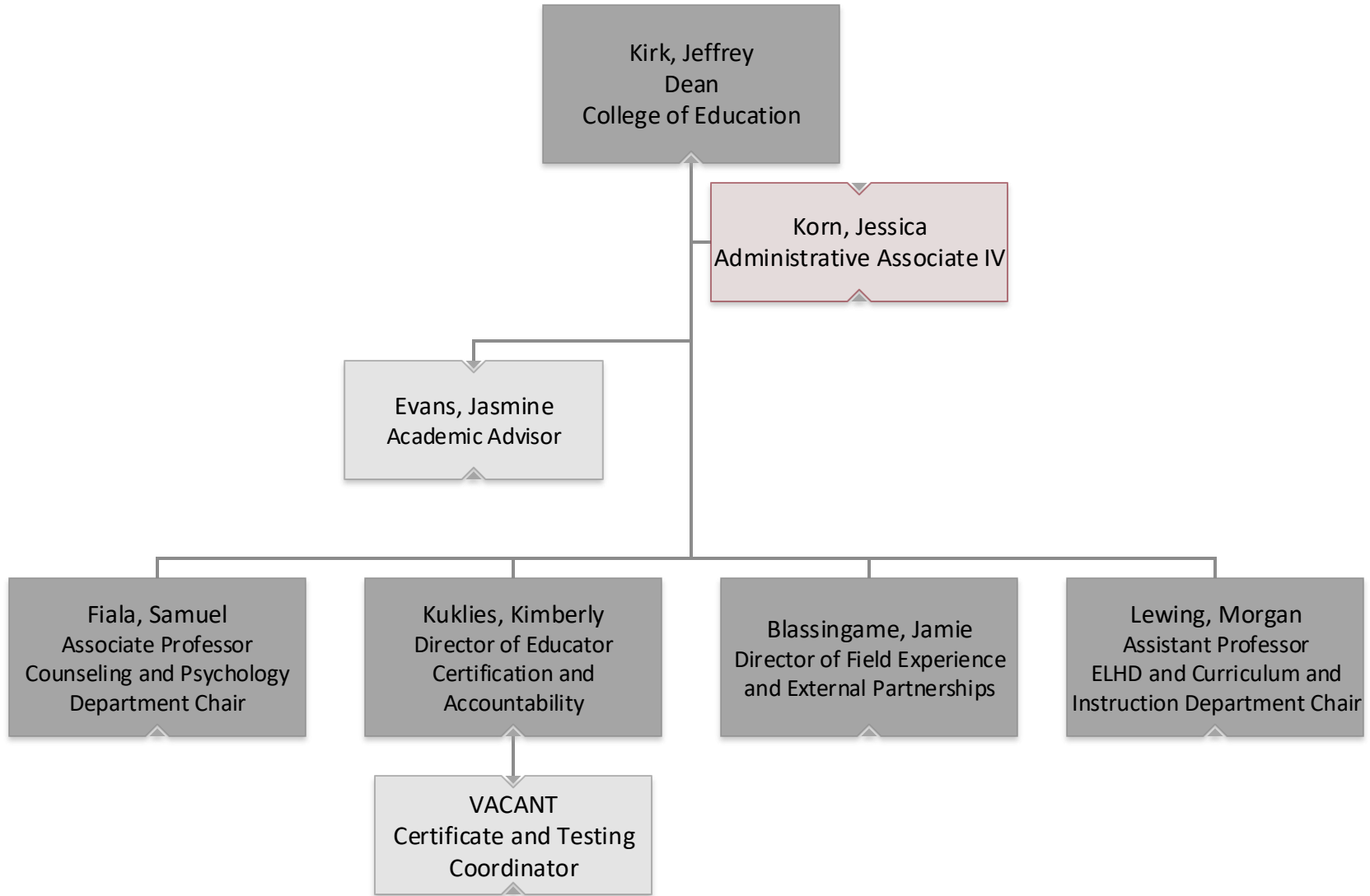


College of Arts and Sciences Nursing



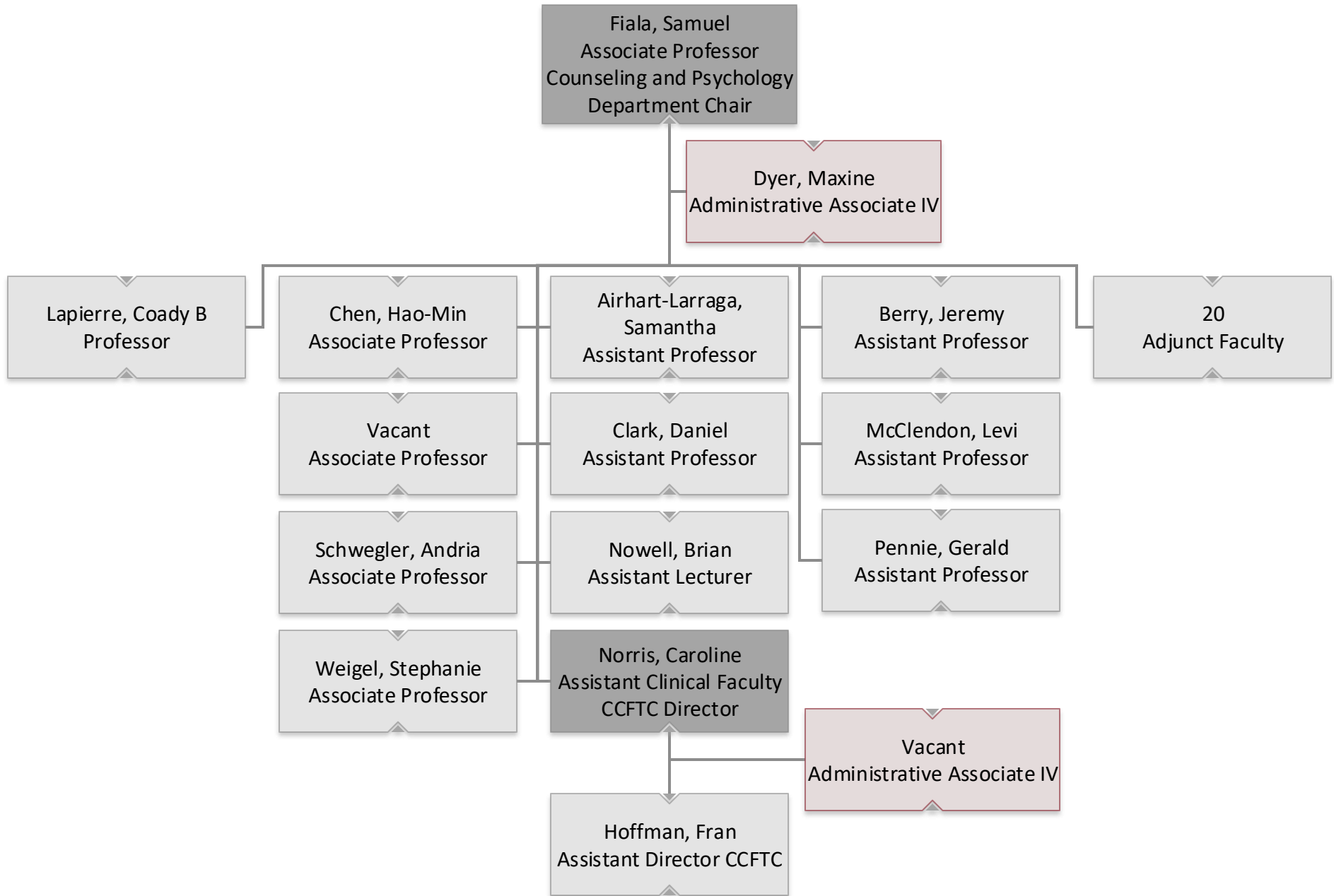


College of Education



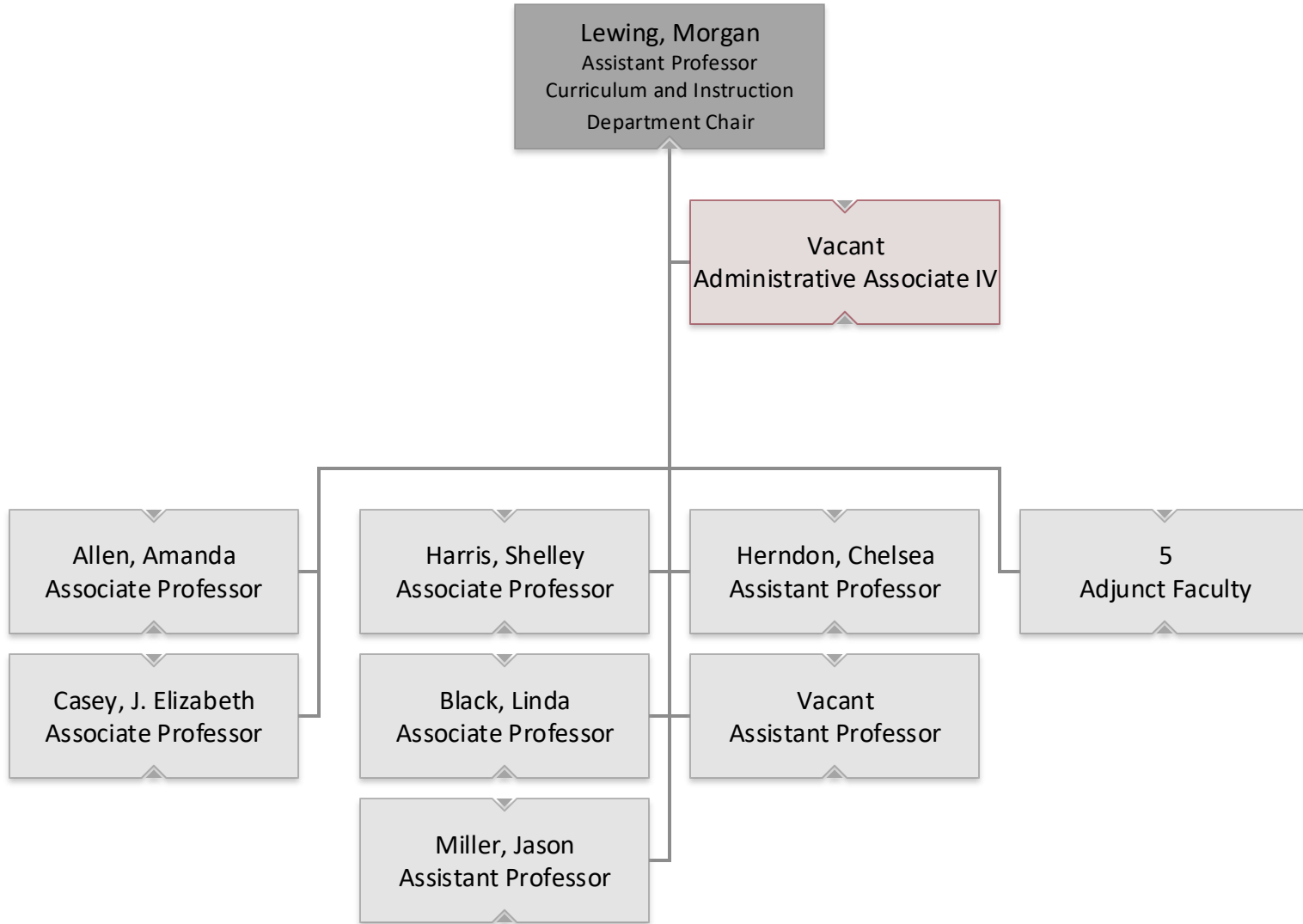


College of Education Counseling and Psychology



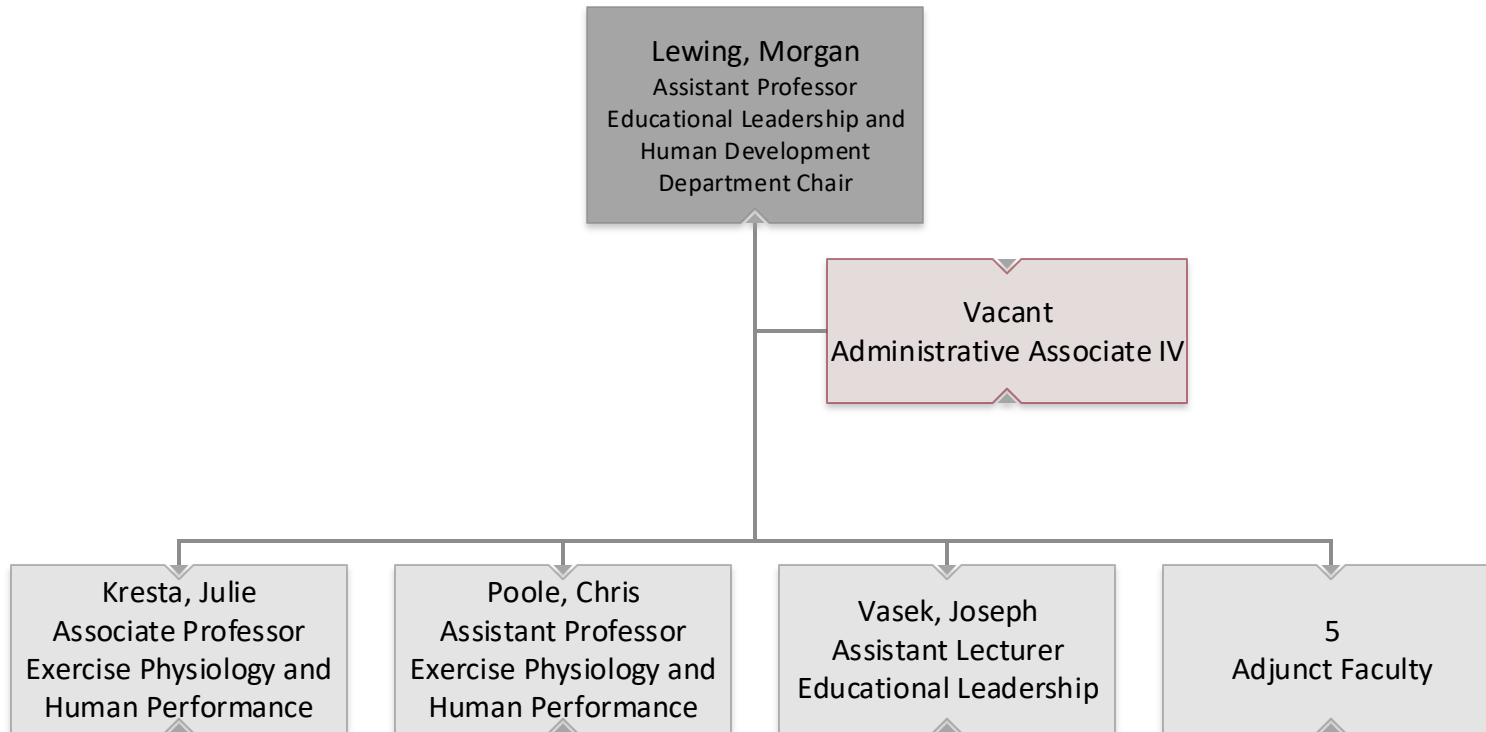


College of Education Curriculum and Instruction



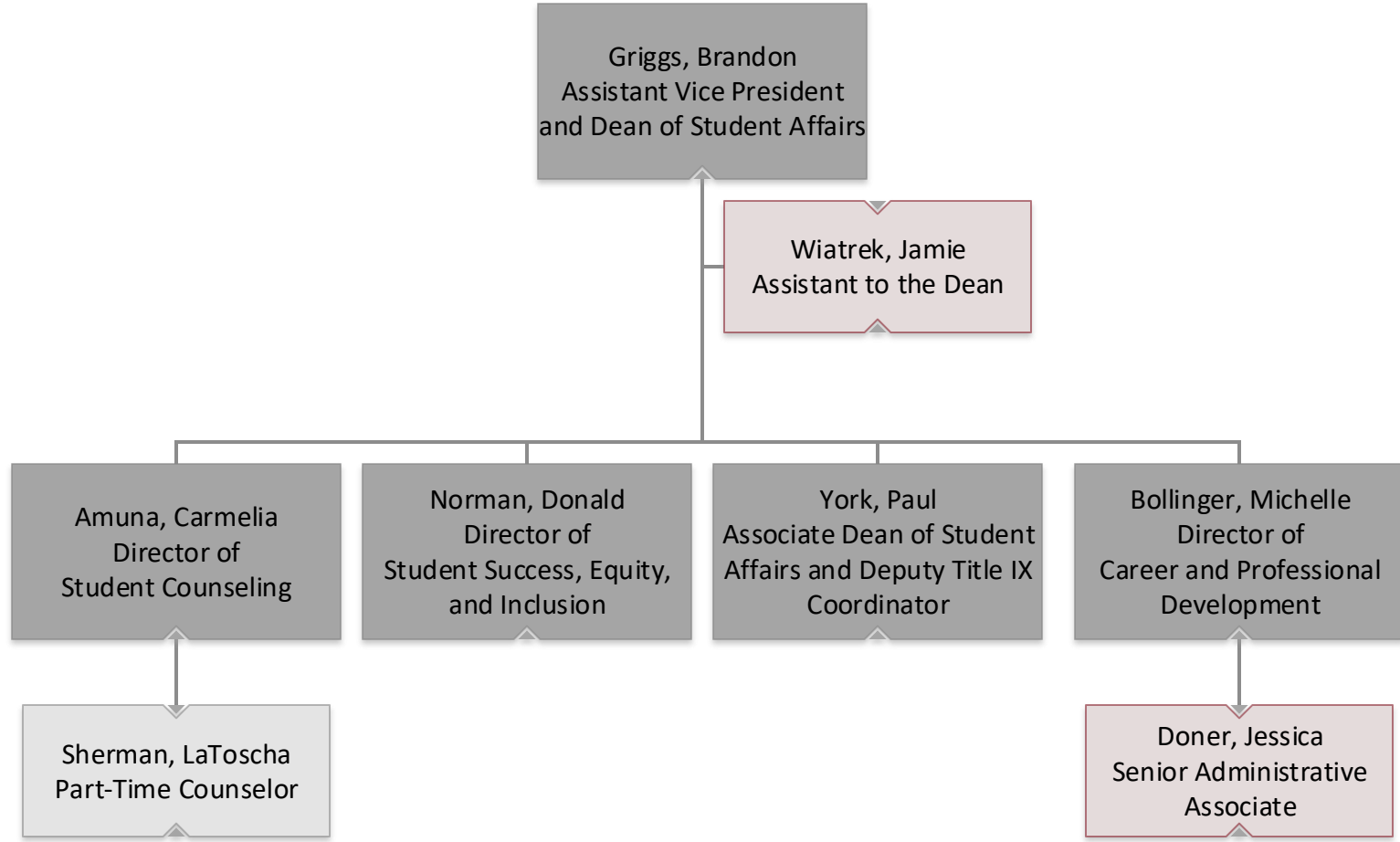


College of Education Educational Leadership and Human Development



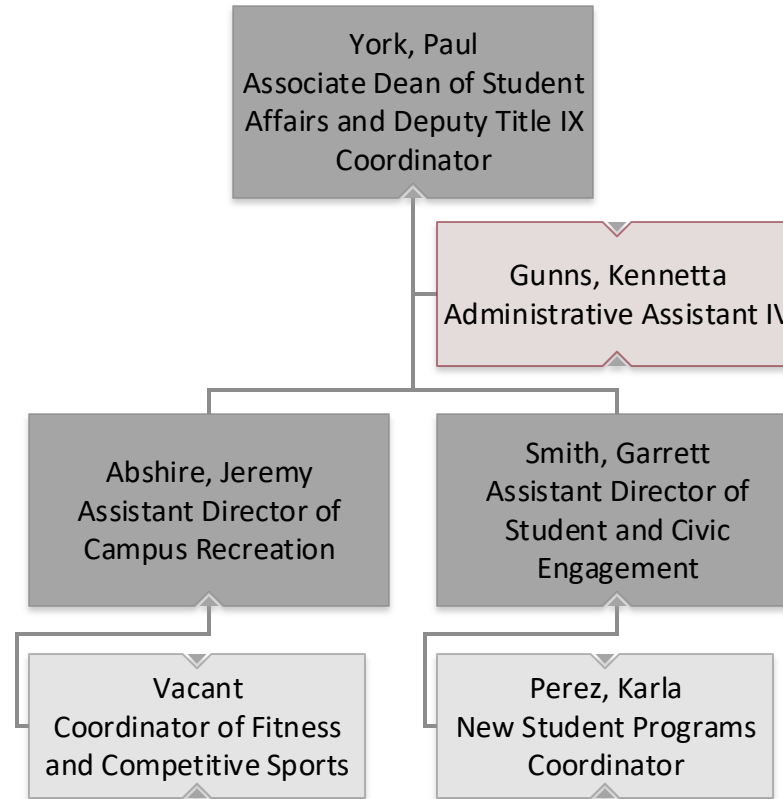


Student Affairs



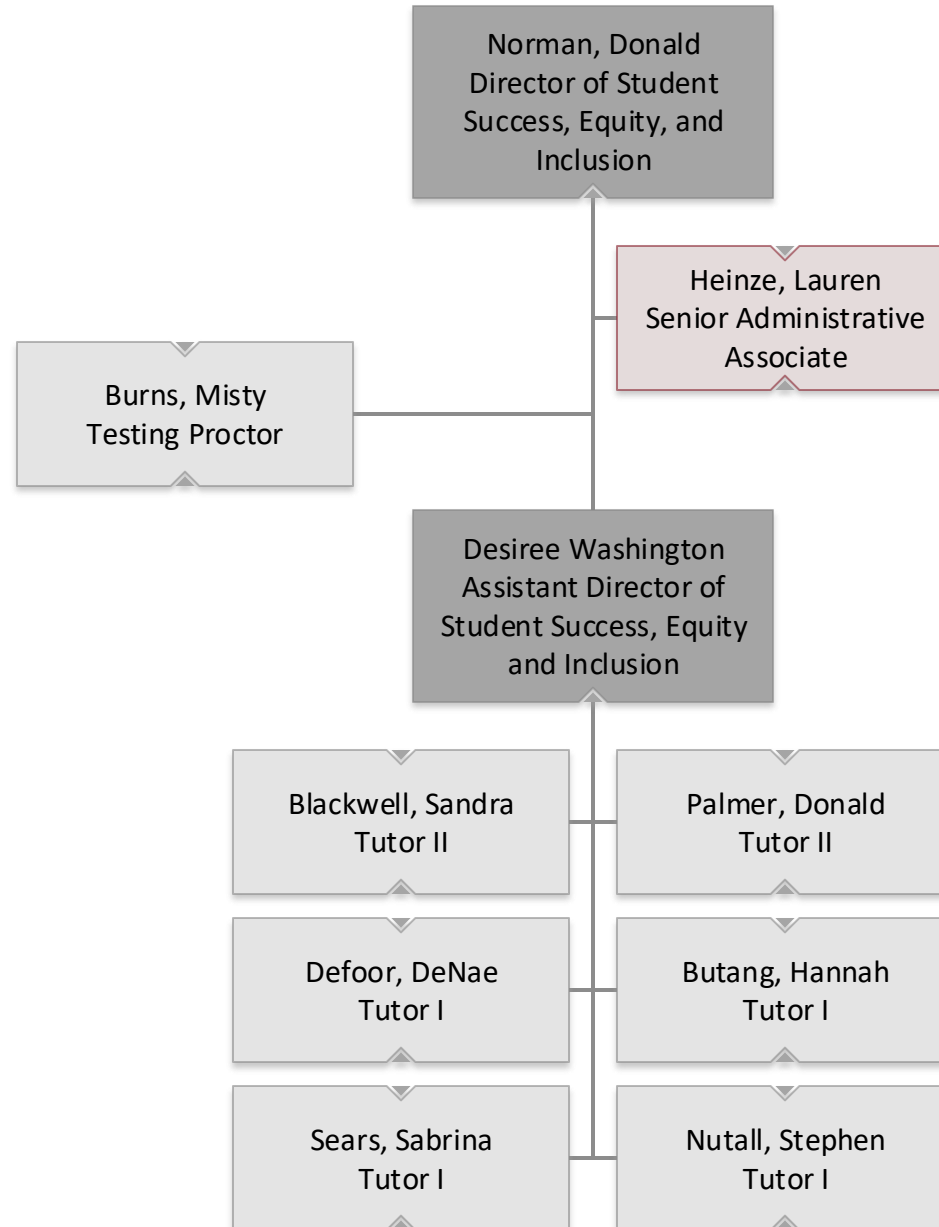


Student Affairs Associate Dean of Student Affairs



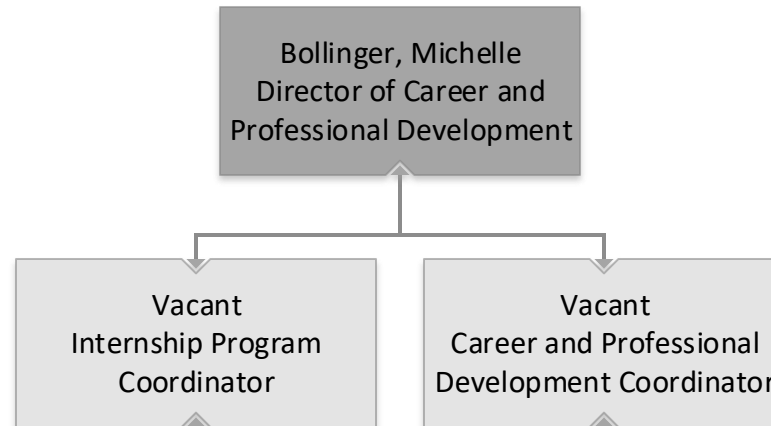


Student Affairs Student Success, Access and Inclusion



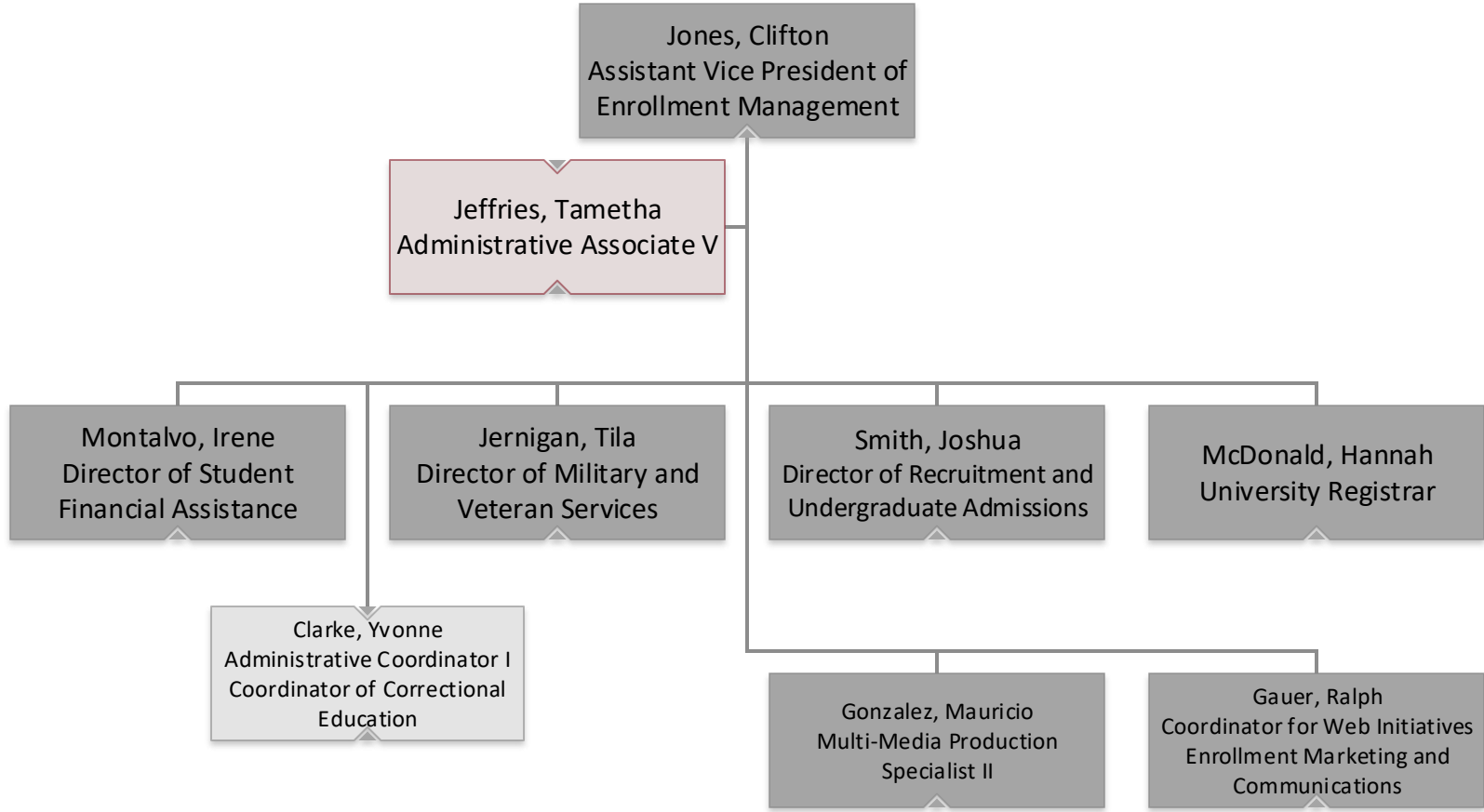


Student Affairs Career and Professional Development



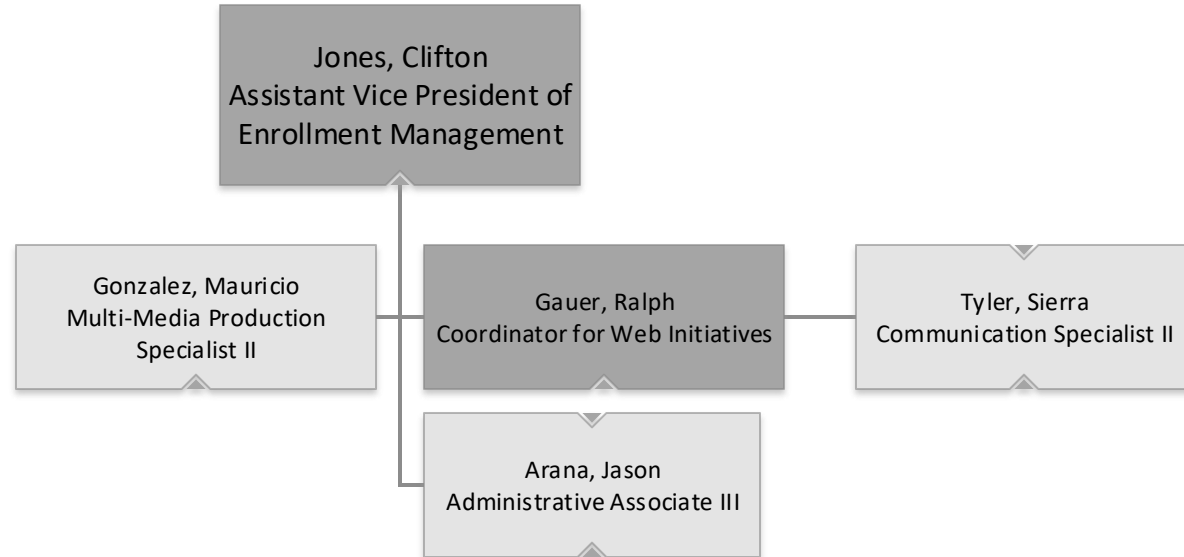


Enrollment Management



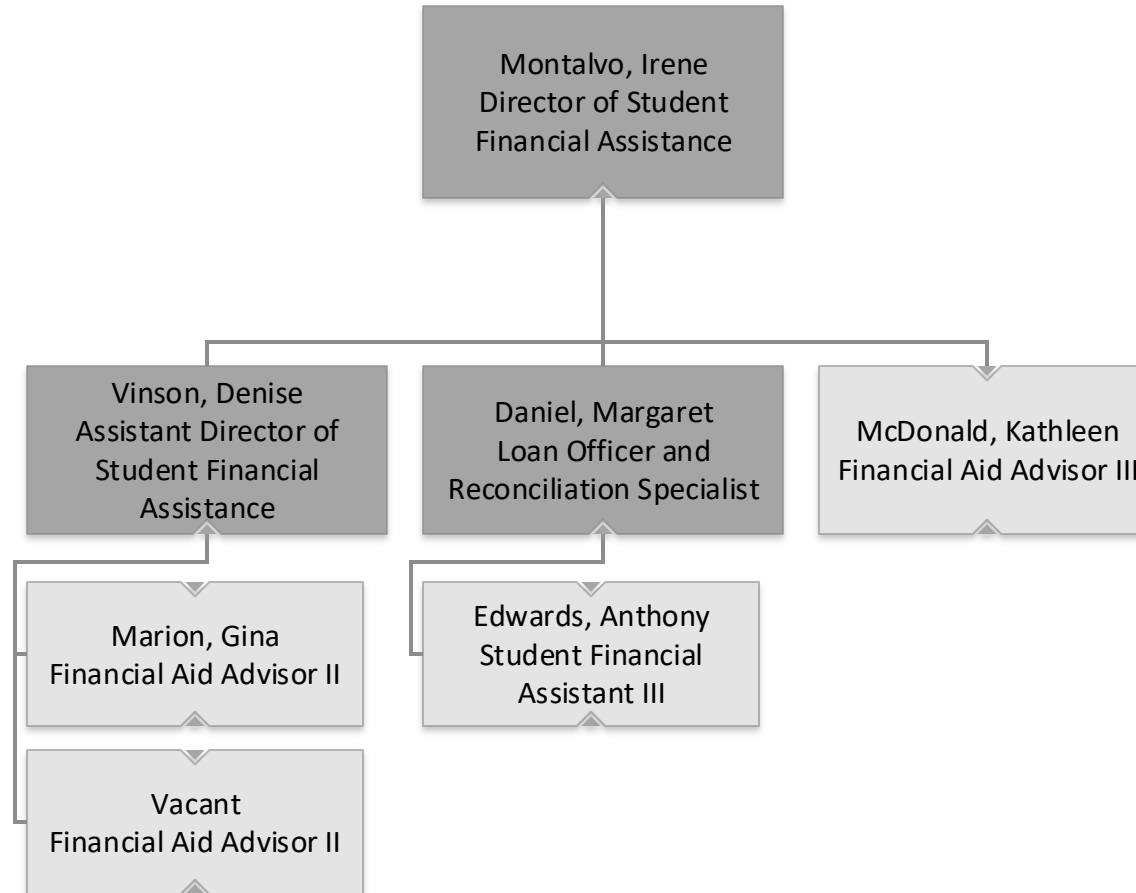


Enrollment Management Marketing and Communications



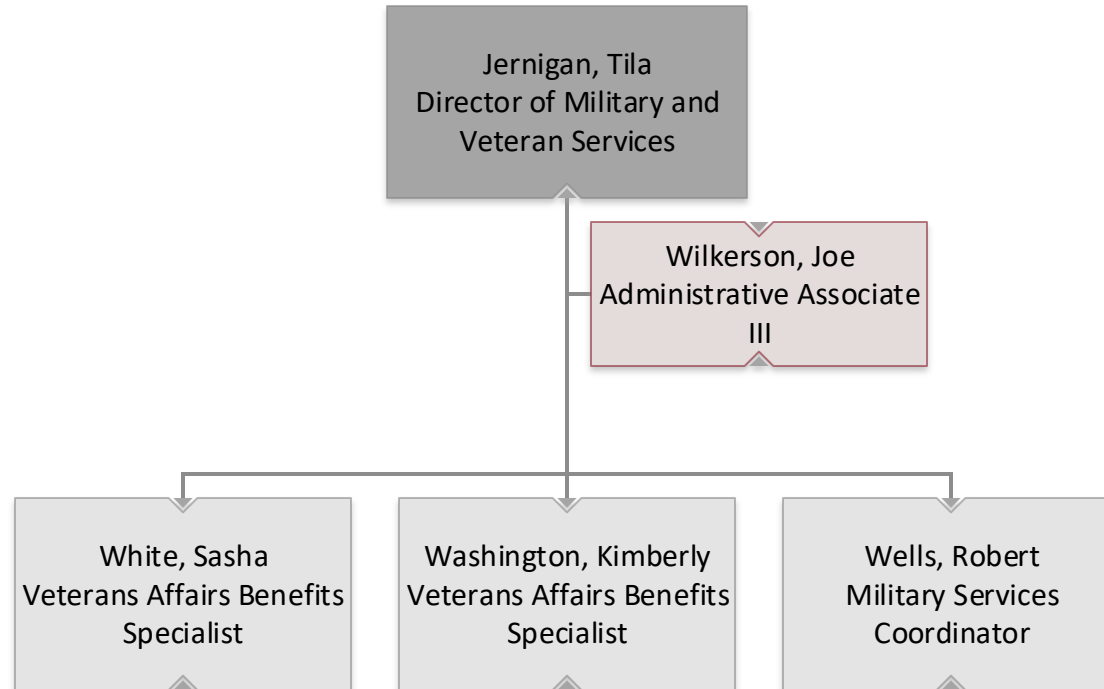


Student Financial Assistance



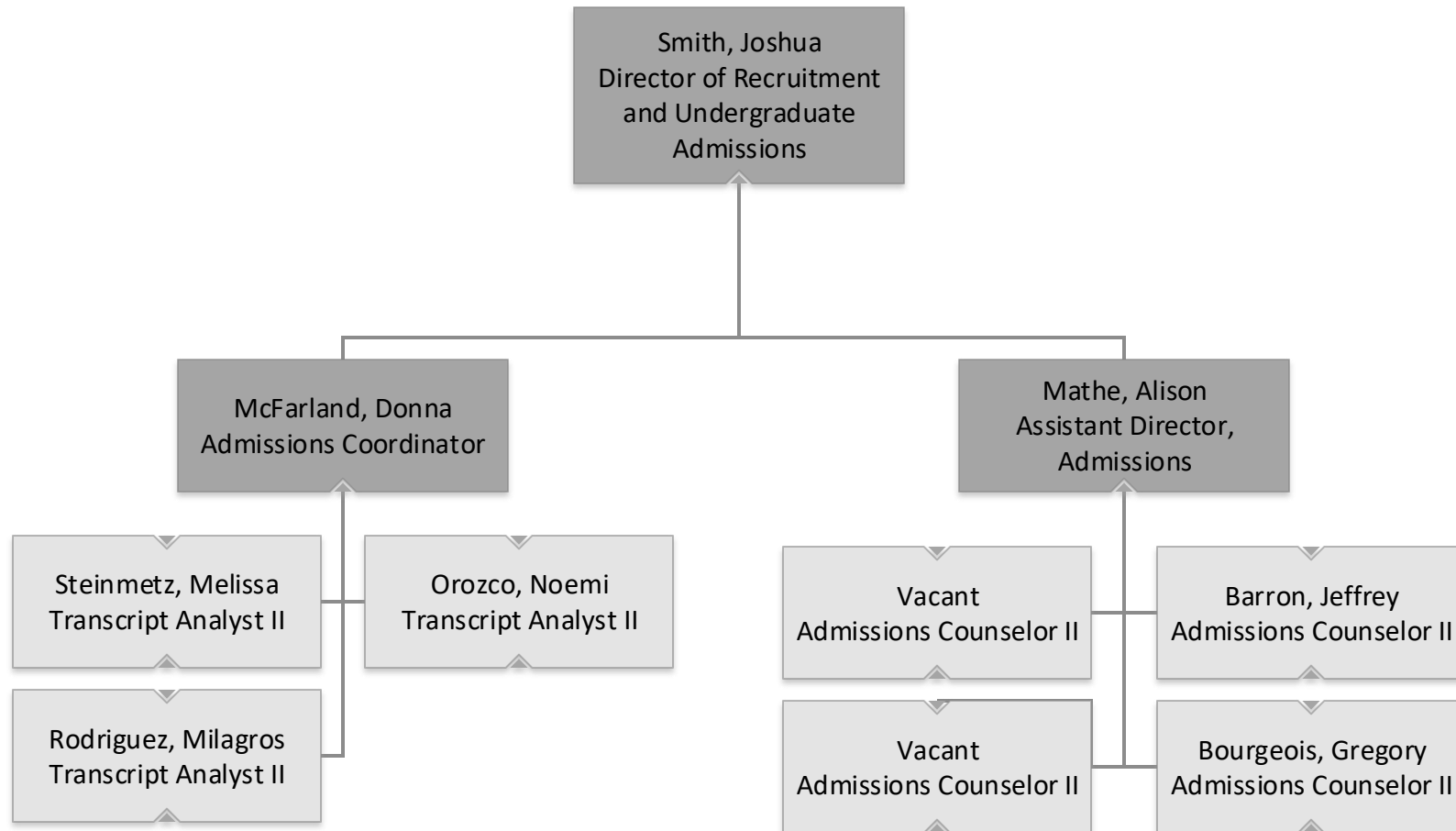


Military and Veteran Services



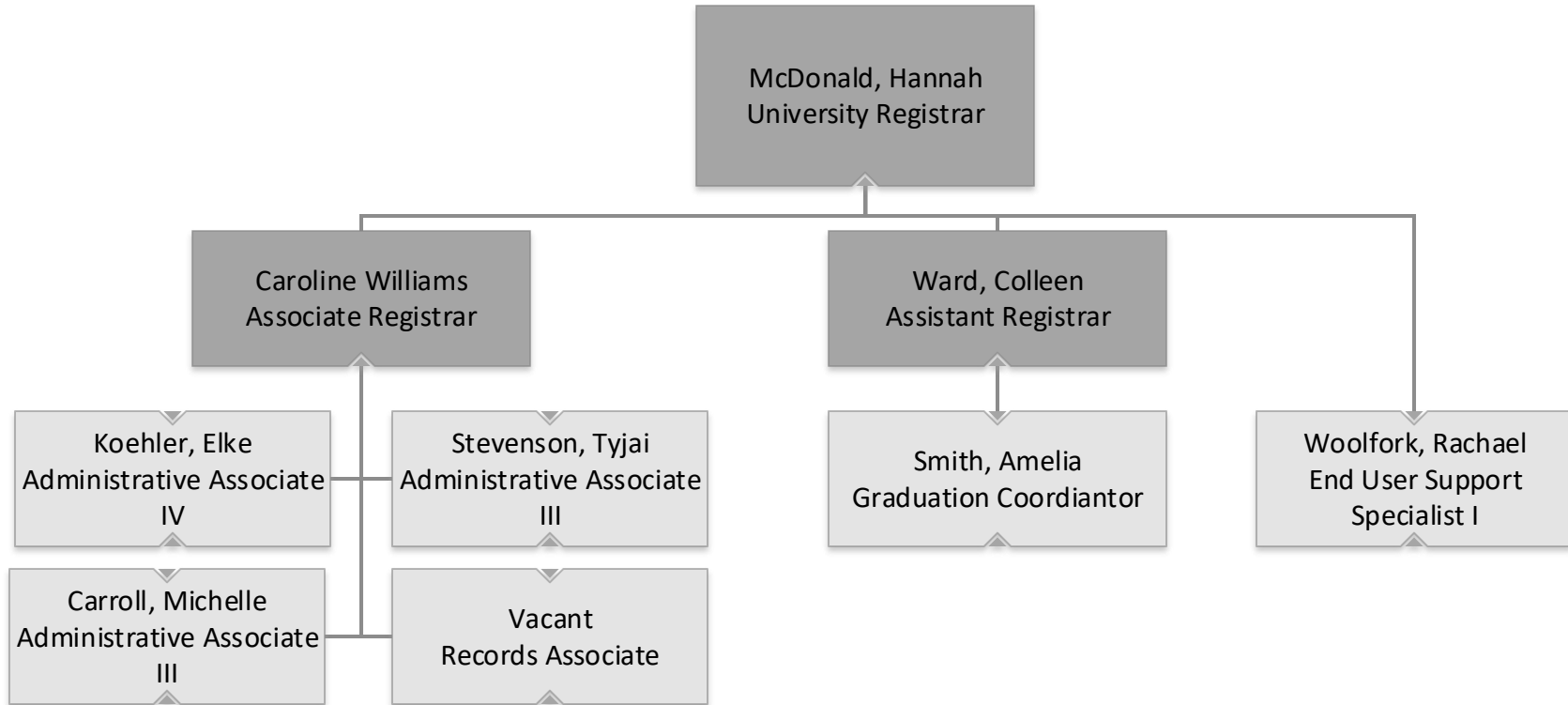


Recruitment and Undergraduate Admissions



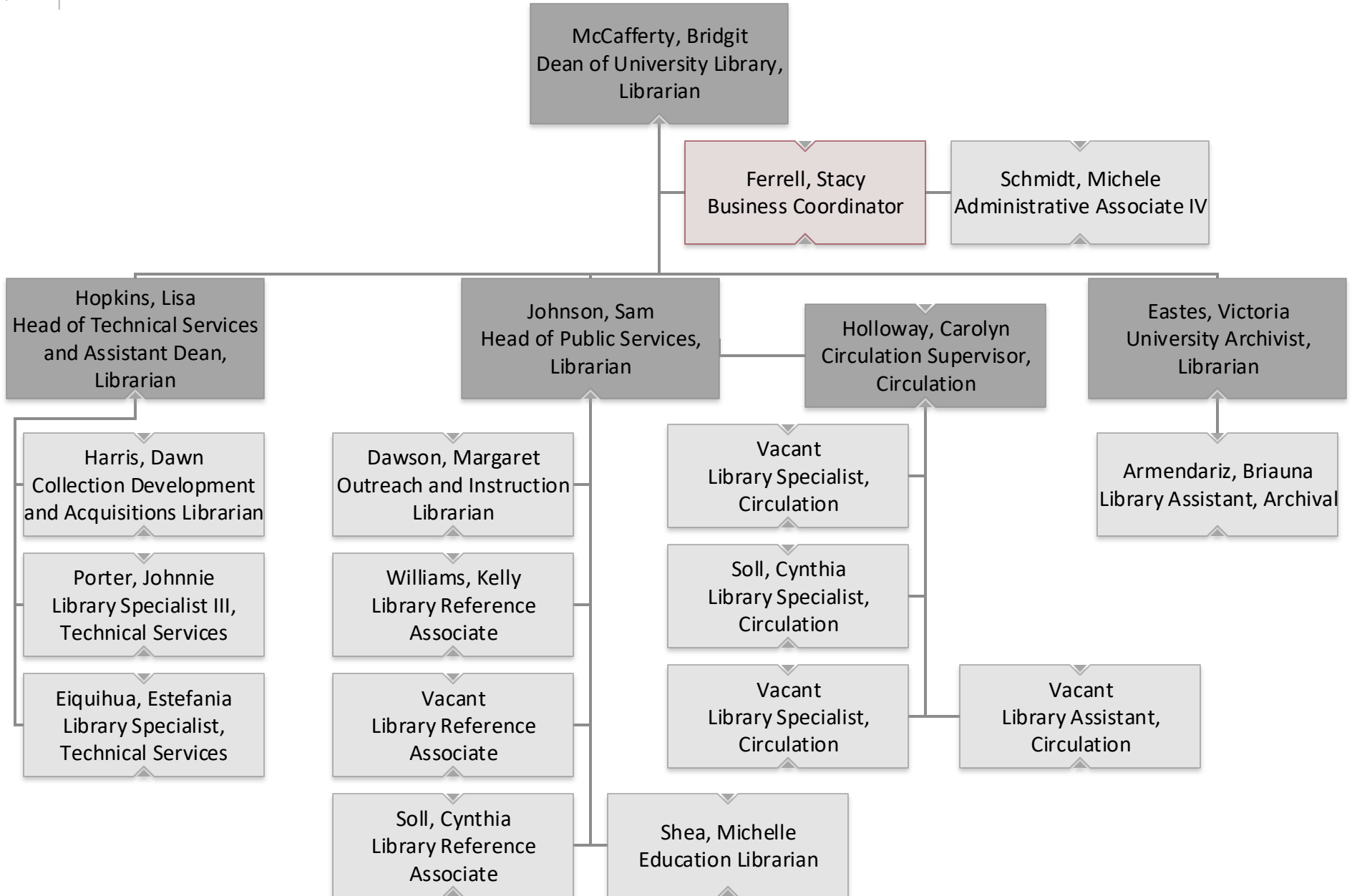


University Registrar



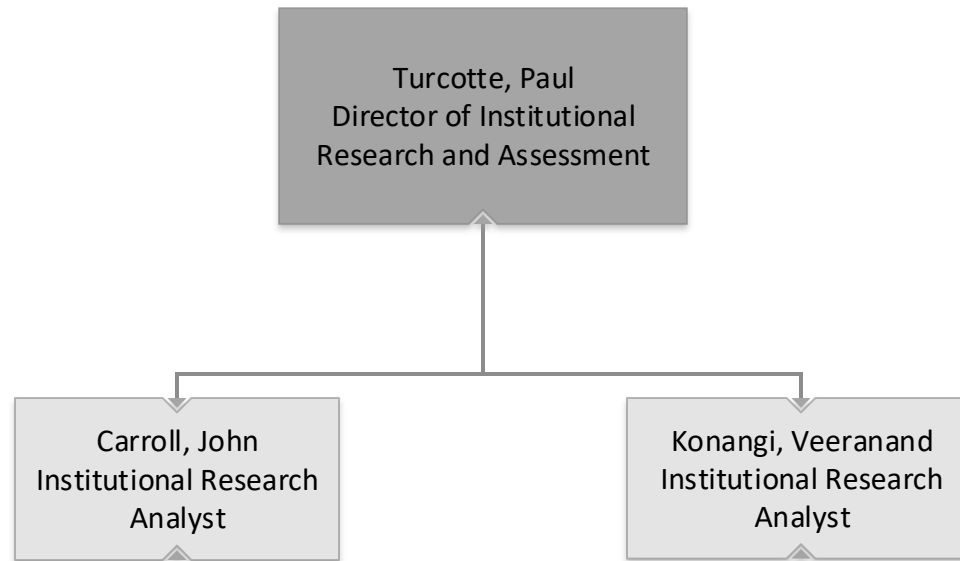


University Library



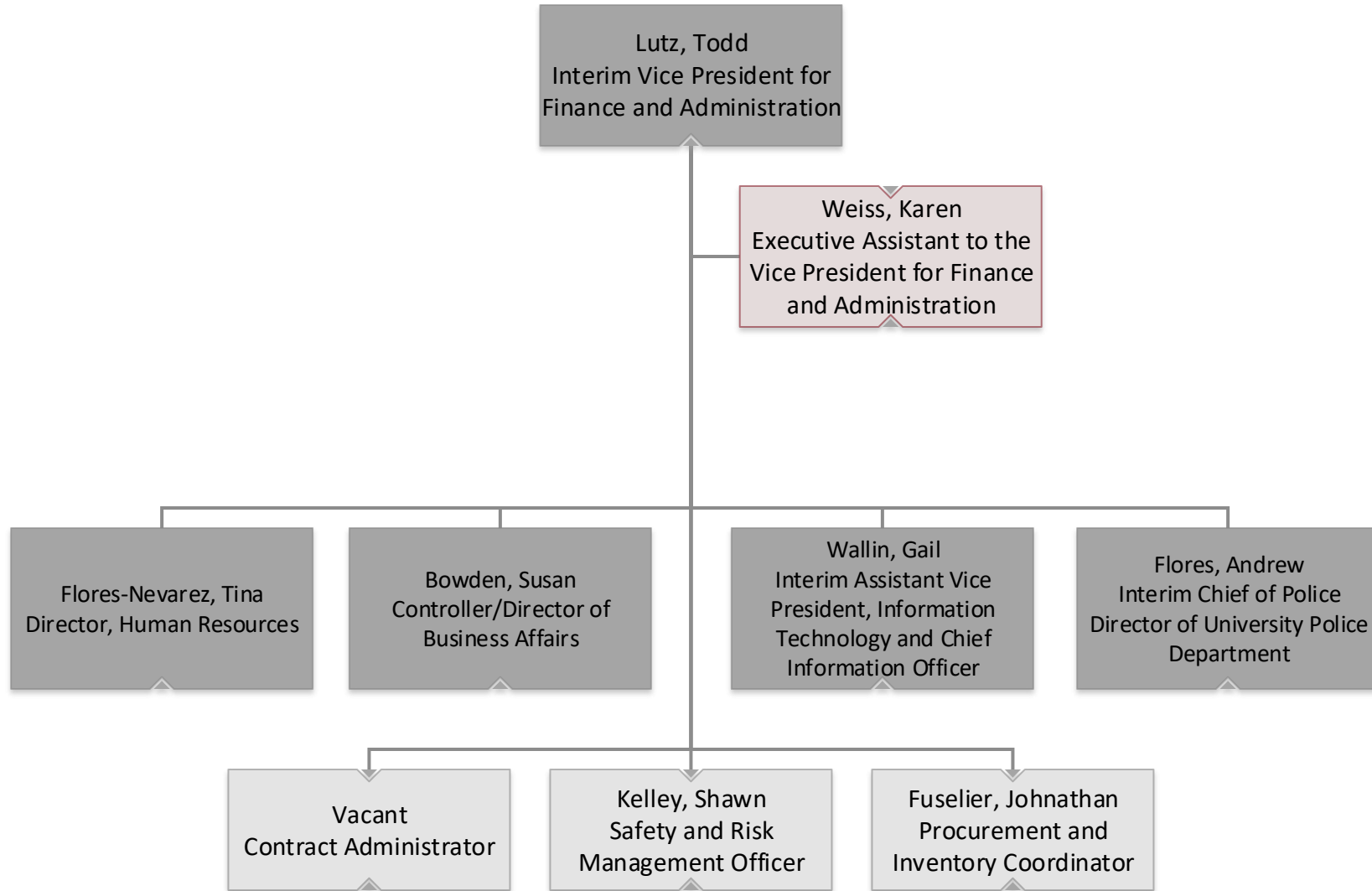


Institutional Research and Assessment



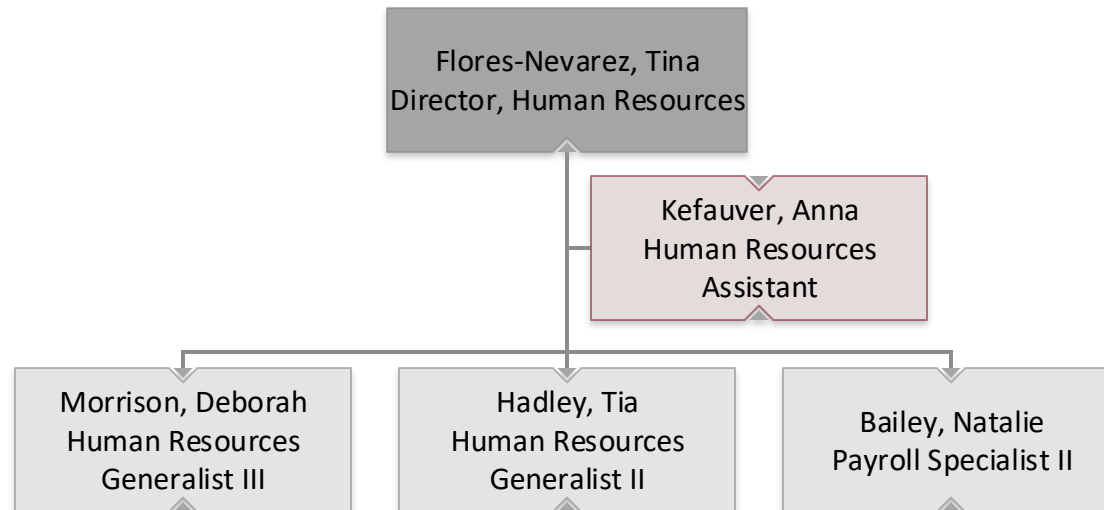


Vice President for Finance and Administration



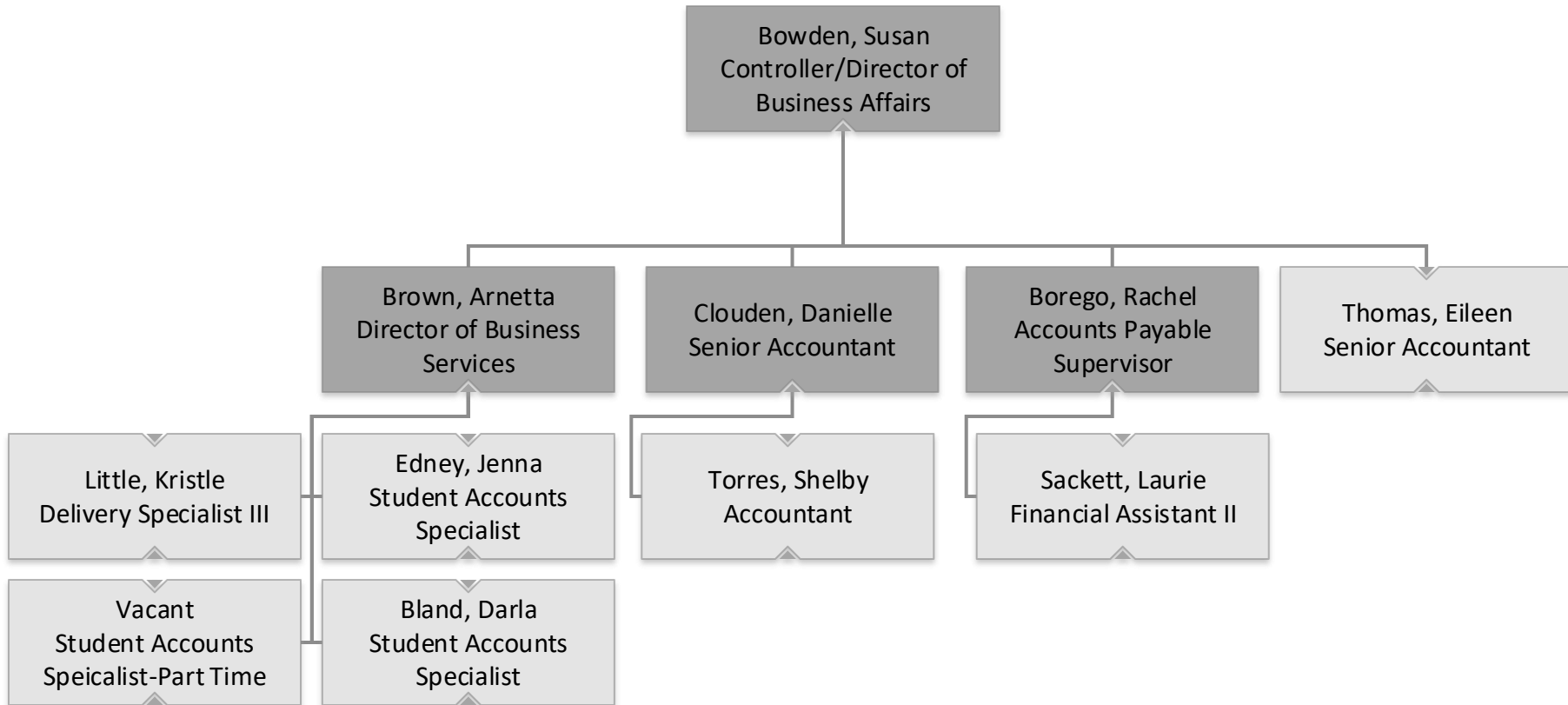


Human Resources



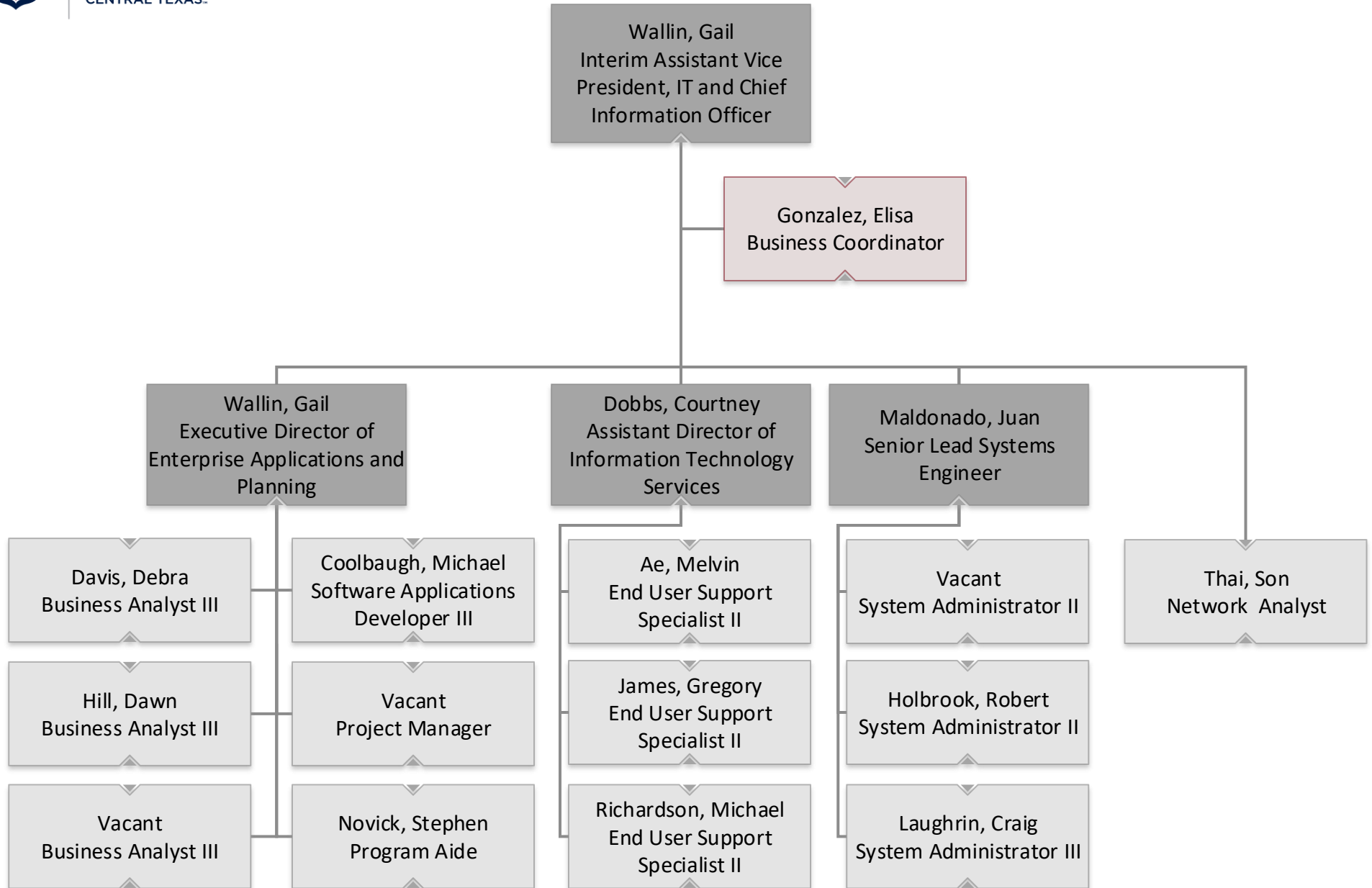


Business Affairs



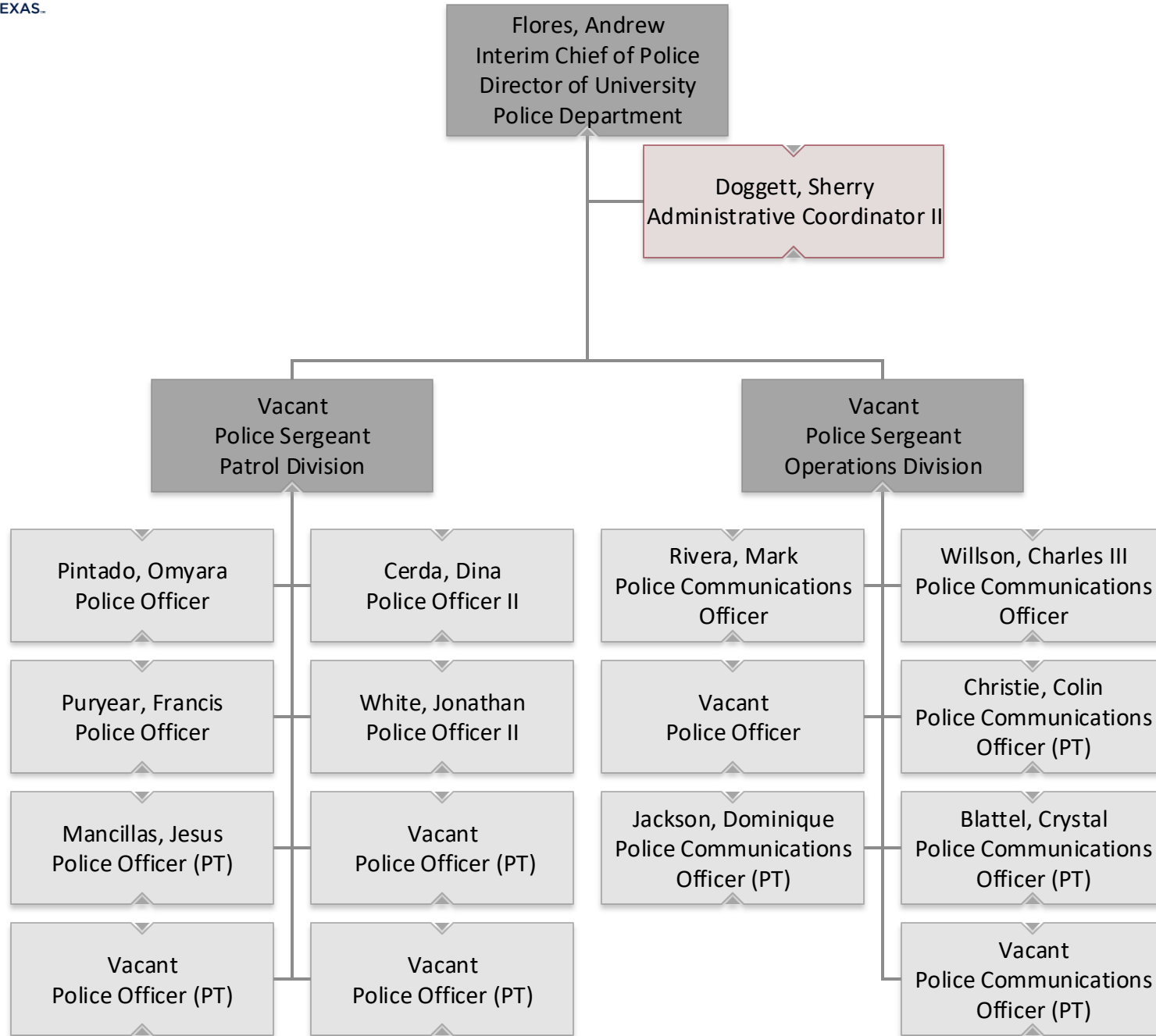


Information Technology





University Police





Office of Research and Economic Development

