



## CHOOSE YOUR PATH

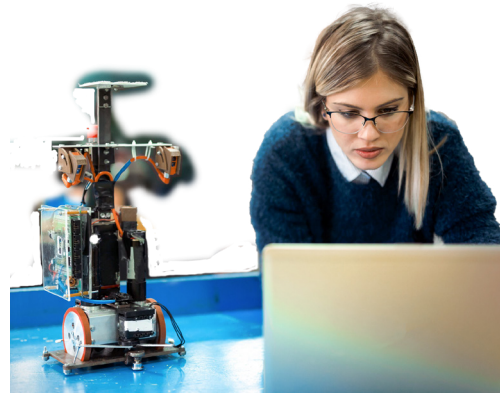
And achieve your career goals

Customize your MET degree for the career you want upon graduation. Our expert faculty guide majors through courses that provide an in-depth introduction to the essential processes, procedures, and technology used throughout the field. These same faculty support students in our MET labs where students gain the hands-on experiences they need for a rewarding career in applied engineering.

### LEARN MORE:



<https://www.tamuct.edu/degrees/undergraduate/Mechanical-Engineering-Technology>



## UNIVERSITY FAST FACTS!

**2nd** most affordable university in Texas\*

**60+%** full-time undergraduates receive gift or grant aid

**15:1** student to faculty ratio

Ranked one of the most ethnically diverse schools in the US

Dedicated admission, financial-aid and academic advisors assigned to you

*\*According to avg. tuition and fees; 2019 Texas Public Higher Education Almanac*

### APPLICATION CHECKLIST

- » Apply for admission via [www.applytexas.org](http://www.applytexas.org)
- » Pay the non-refundable application fee
- » Submit official transcripts from all previously attended college-level institutions

### UNDERGRADUATE ADMISSION REQUIREMENTS

- » Minimum 2.0 cumulative transfer GPA on a 4.0 scale
- » Minimum 30 academic, college-level transferable hours
- » Must be eligible to return to all previously attended institutions

### SCHEDULE YOUR VISIT!

TAMUCT is located near the intersection of State Highway 195 and State Highway 201 near the Killeen-Ft. Hood Regional Airport.

### DAILY TOURS

We offer both individual and group tours! Individual tours occur Tuesdays, Wednesdays, and Fridays. All tours depart from Warrior Hall Room 211.



**TEXAS A&M UNIVERSITY CENTRAL TEXAS.**

**1001 Leadership Place, Killeen, TX 76549**  
254.501.5900 ★ [tamuct.edu](http://tamuct.edu)  
[admissions@tamuct.edu](mailto:admissions@tamuct.edu)



**TEXAS A&M UNIVERSITY CENTRAL TEXAS.**

## Bachelor of Science Mechanical Engineering Technology

HOME OF THE **WARRIORS**





## STUDENT TESTIMONIAL

“Had you taken the problem-solving skills that I had before coming here and put me into my position now at work, I would be lost, like entirely lost. My two years here at A&M-Central Texas have been economically efficient and time efficient. Working in my field and working in a career that I enjoy is life changing.”

Connor Lydon, B.S. in Mechanical Engineering Technology graduate.



## WHY CHOOSE A&M - CENTRAL TEXAS

A&M—Central Texas is an upper-division university that prides itself on making the transfer process as easy as possible for every student entering our programs. The mechanical engineering program accepts most outside credit and applies it directly to the degree. Expert faculty specialize in upper-level instruction that emphasizes hands-on learning over advanced mathematics and concepts. Our majors extend discussions that start in our small classes to our state-of-the-art MET laboratories. When our students graduate, they are ready to enter the workforce with the practical skills and knowledge necessary for employment within the industry.

## OPPORTUNITIES FOR YOU

### A future with options

Whether working on medical devices or building space shuttles, the demand for quality engineers remains high. A&M - Central Texas' applied applications better prepare individuals entering the industry. Our senior design class connects students with an industry sponsor to design and build a solution to a real-world engineering problem. Our Bachelor of Science degree in mechanical engineering opens doors in manufacturing, aerospace, energy, automotive, and marine industries without the high cost. Where will your skills take you?

Potential career opportunities include:

- **Engineering Technologist**
- **Mechanical Designer**
- **Senior Process Analyst**
- **Computer Aided Design (CAD) Designer**
- **Machinery Operation and Repair**

## CONNECT AND ENGAGE

### Build relationships and make a difference

Our Bachelor of Science in Mechanical Engineering Technology students benefit from an enriched learning experience inside and outside of the classroom.

Mechanical engineering is applied problem solving. You will gain experience with:

- **State-of-the-art labs and equipment**
- **Work-place communication styles and best practices**
- **Real-world experience with an industry sponsor**